

Montana Tech Library

Digital Commons @ Montana Tech

---

Silver Bow Creek/Butte Area Superfund Site

Montana Superfund

---

Fall 9-2024

## APPENDIX D COMPARISON OF HISTORICAL COC RESULTS TO GROUNDWATER REMEDIAL GOALS

Stantec Consulting Services, Inc.

Follow this and additional works at: [https://digitalcommons.mtech.edu/superfund\\_silverbowbutte](https://digitalcommons.mtech.edu/superfund_silverbowbutte)



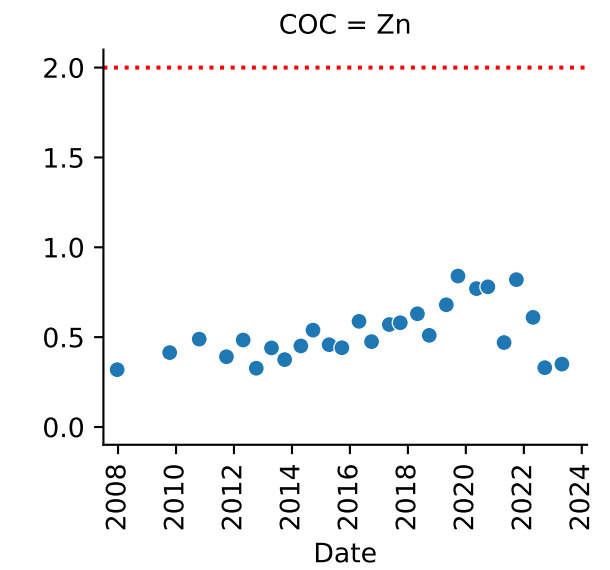
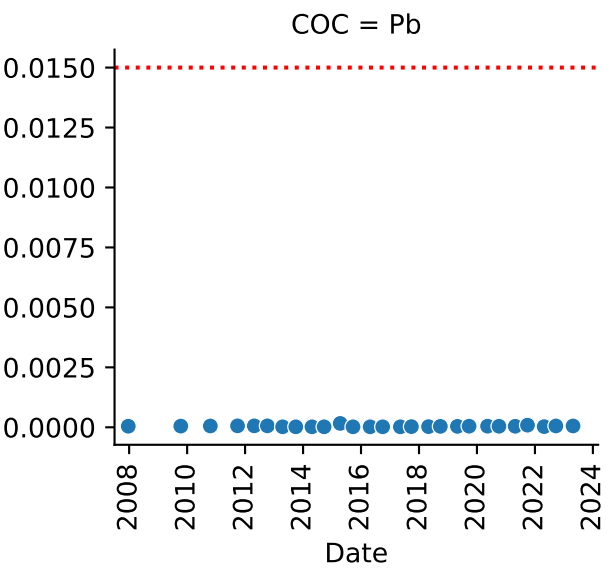
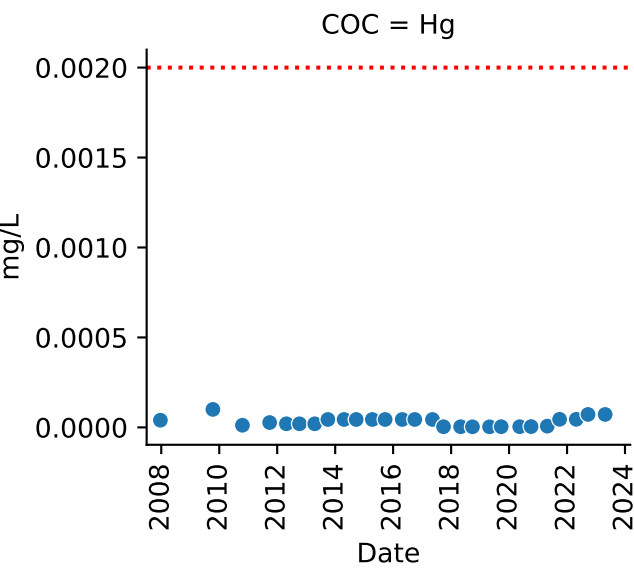
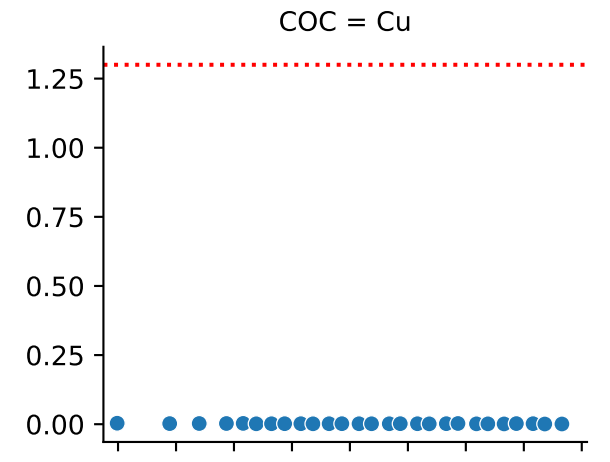
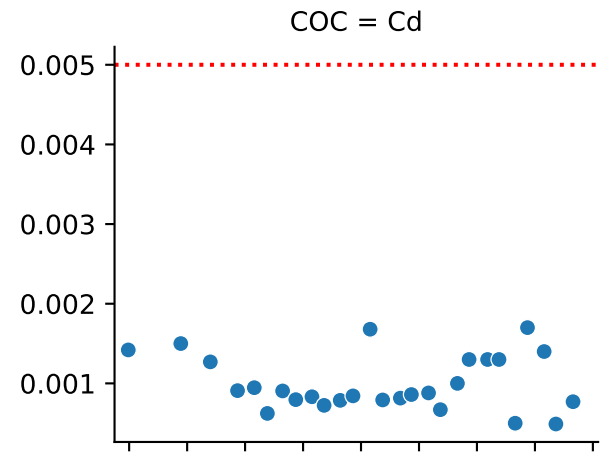
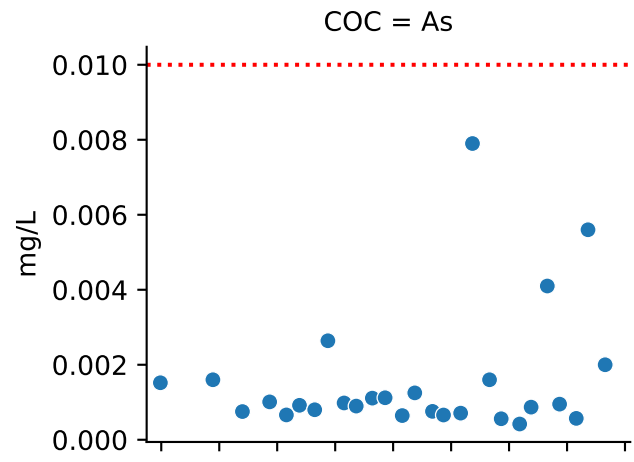
Part of the [Environmental Health and Protection Commons](#), [Environmental Indicators and Impact Assessment Commons](#), and the [Environmental Monitoring Commons](#)

---

**APPENDIX D**

**COMPARISON OF HISTORICAL COC  
RESULTS TO GROUNDWATER  
REMEDIAL GOALS**

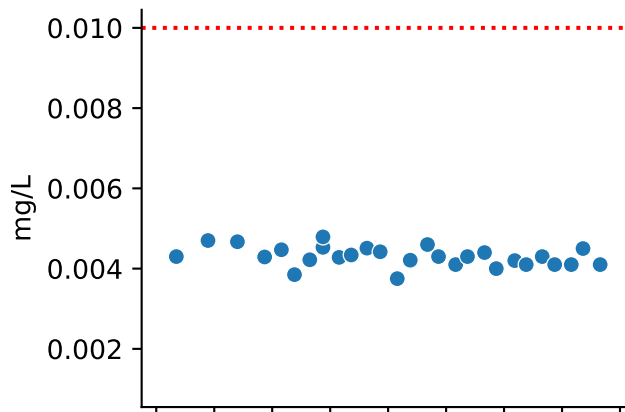
Well = AMC-24



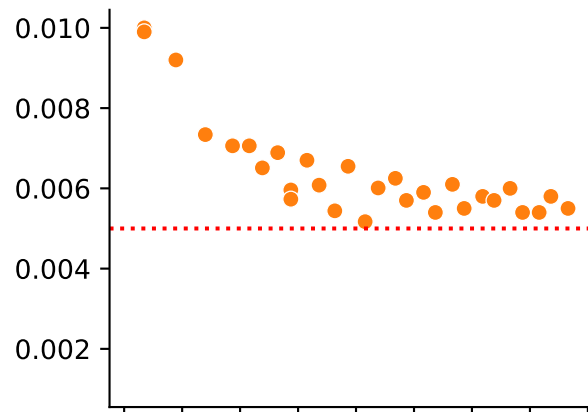
Exceeds GW Std  
● False

# Well = AMC-24B

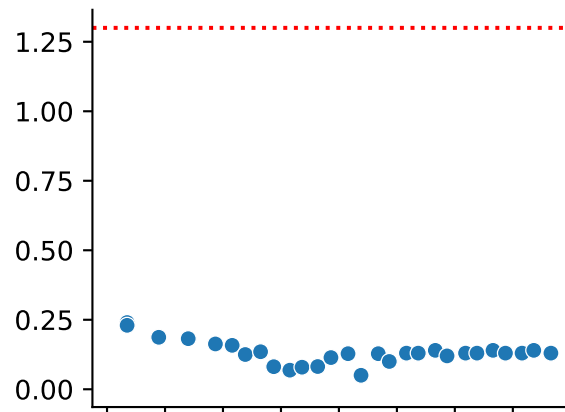
## COC = As



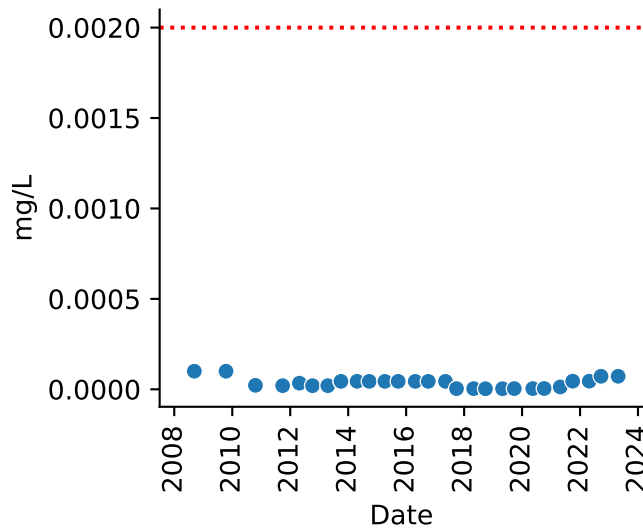
## COC = Cd



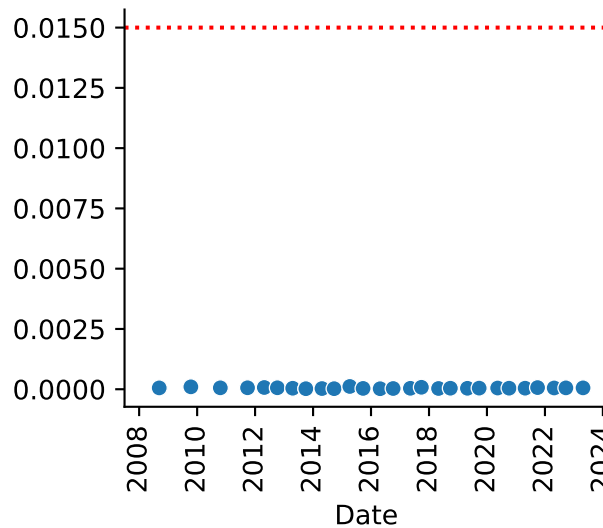
## COC = Cu



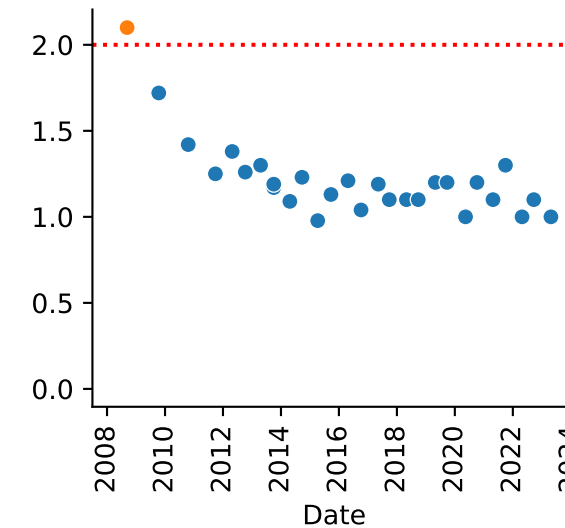
## COC = Hg



## COC = Pb



## COC = Zn



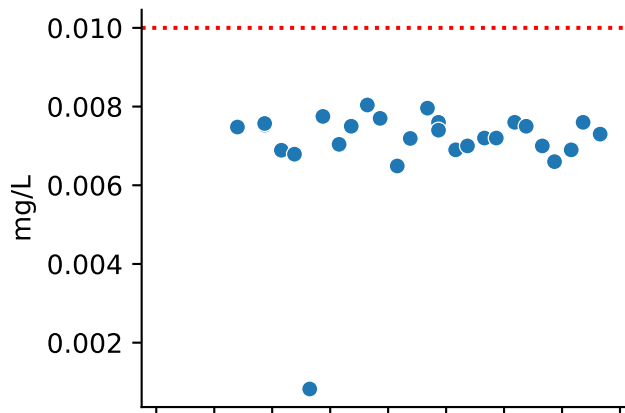
Exceeds GW Std

● False

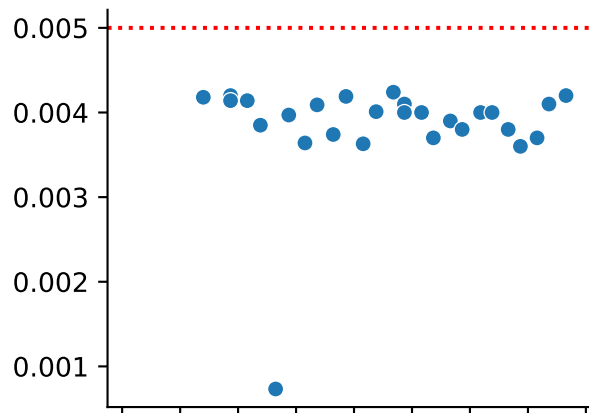
● True

# Well = AMC-24C

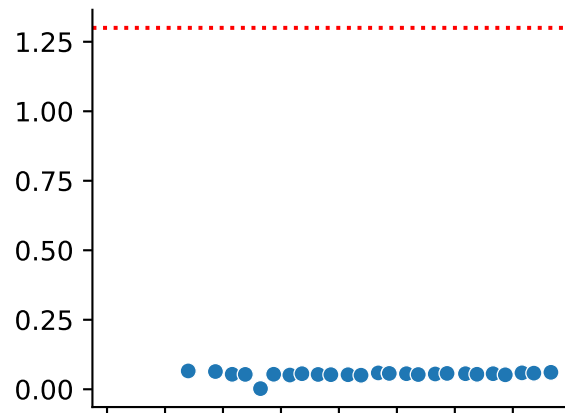
## COC = As



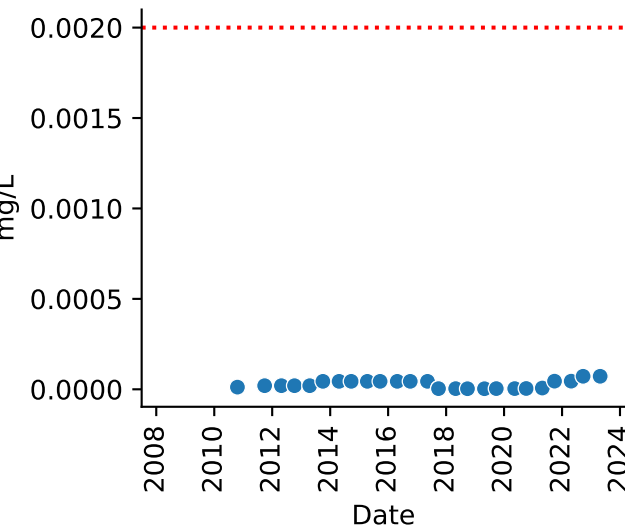
## COC = Cd



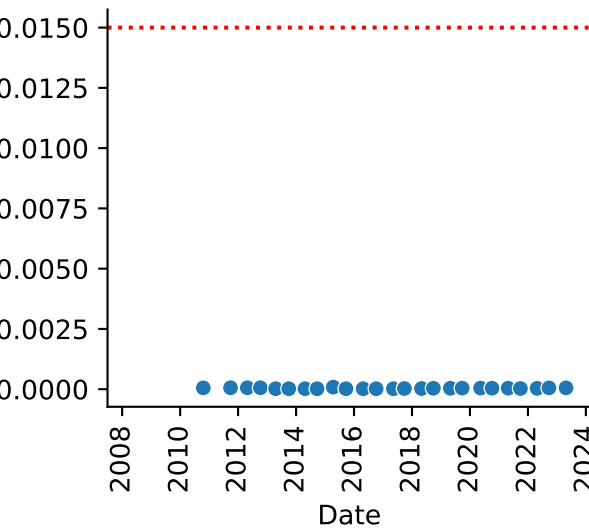
## COC = Cu



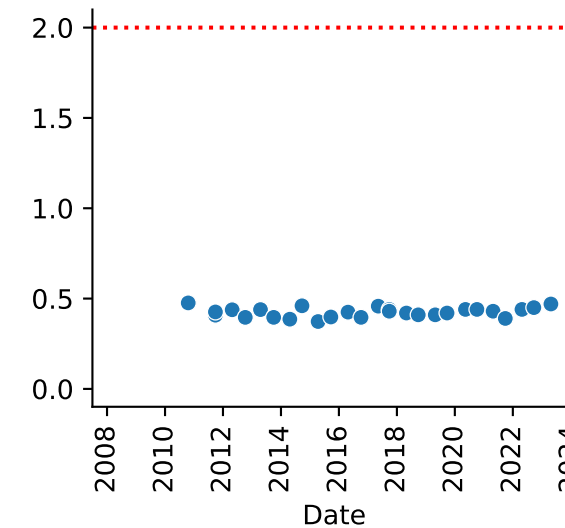
## COC = Hg



## COC = Pb

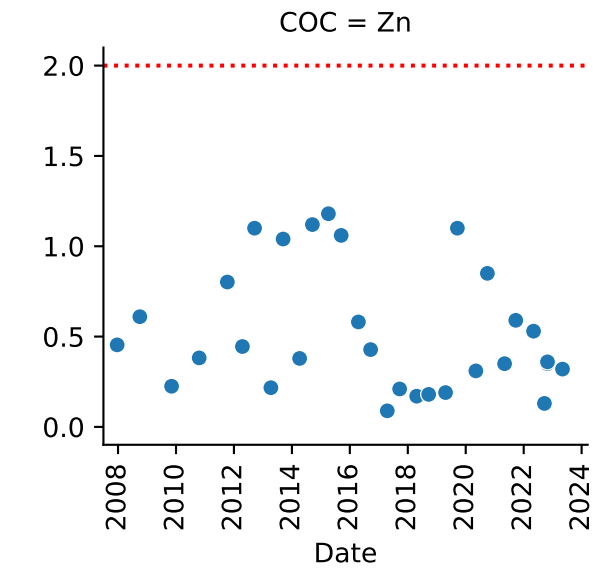
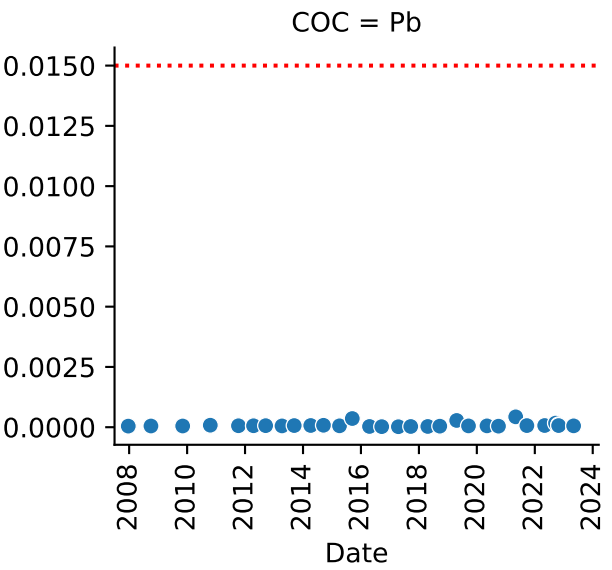
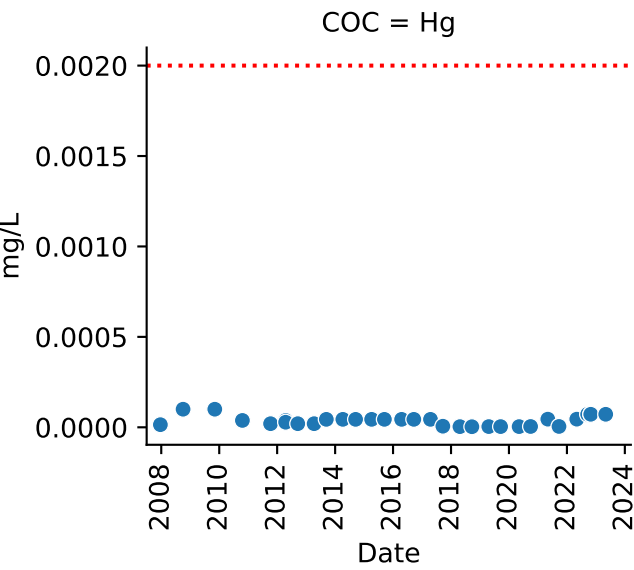
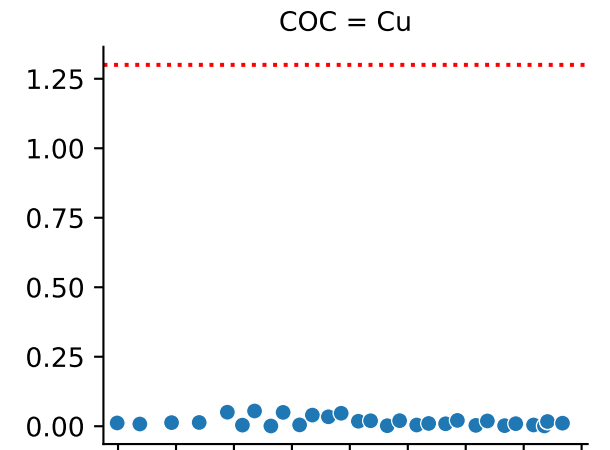
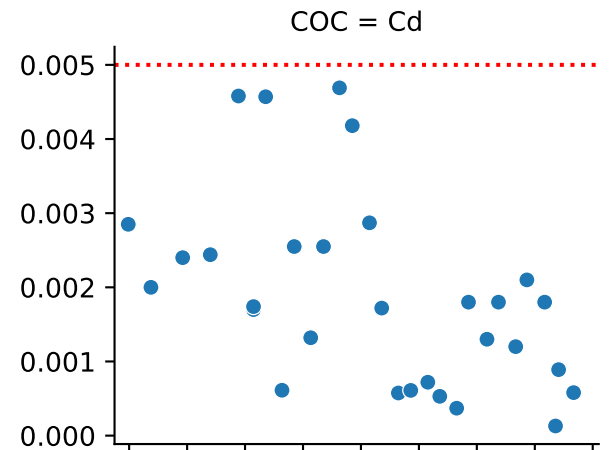
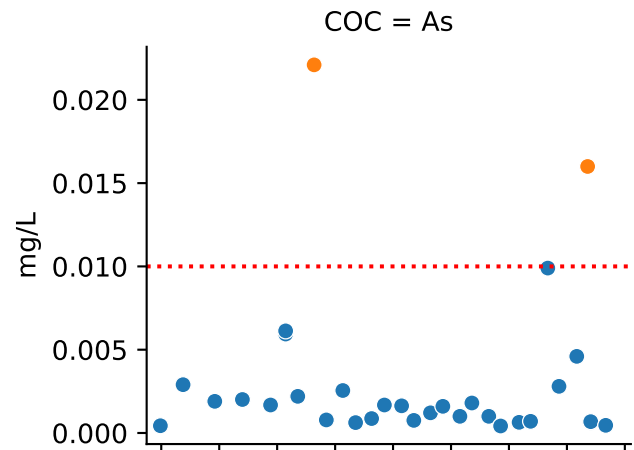


## COC = Zn



Exceeds GW Std  
● False

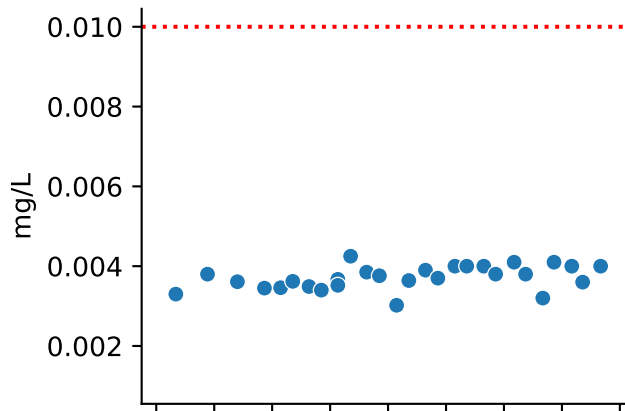
Well = AMW-13



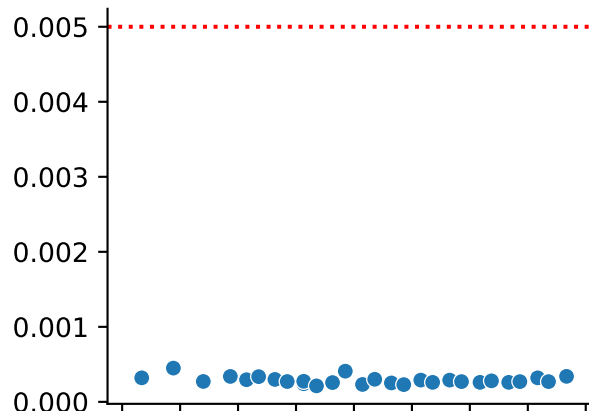
Exceeds GW Std  
● False  
● True

Well = AMW-13B

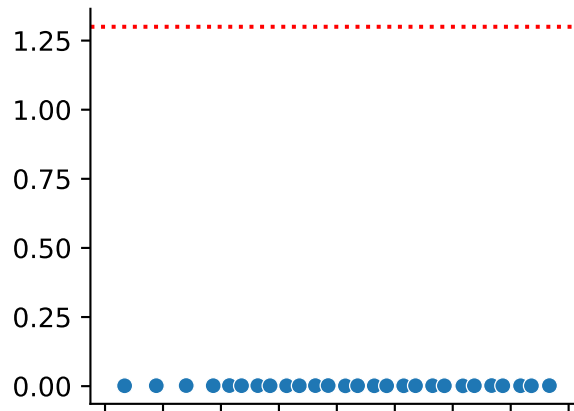
COC = As



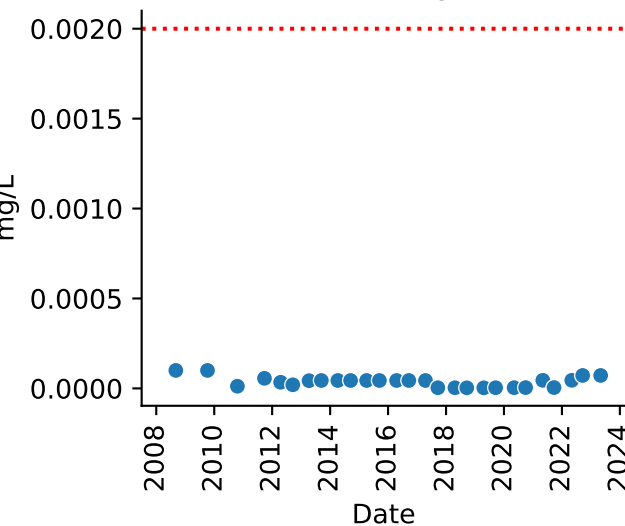
COC = Cd



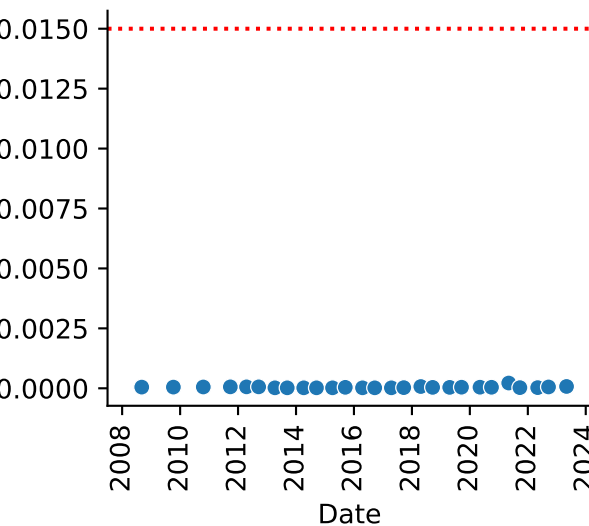
COC = Cu



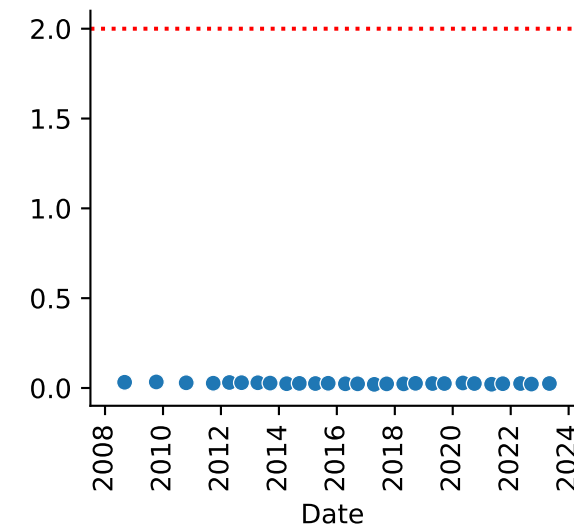
COC = Hg



COC = Pb



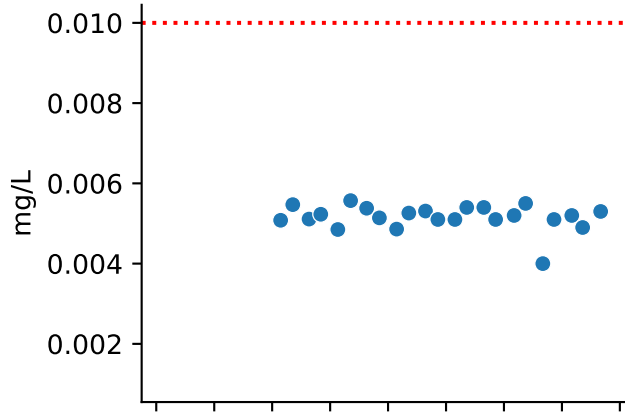
COC = Zn



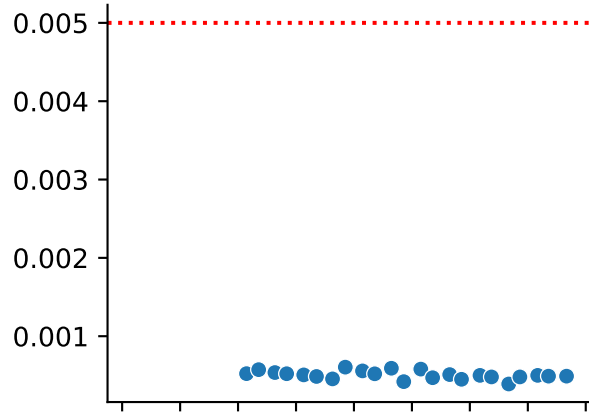
Exceeds GW Std  
● False

# Well = AMW-13B2

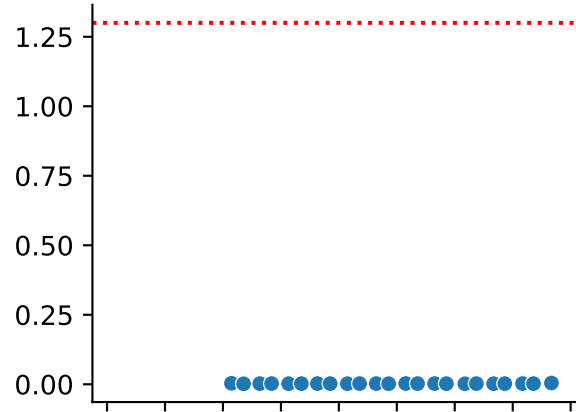
### COC = As



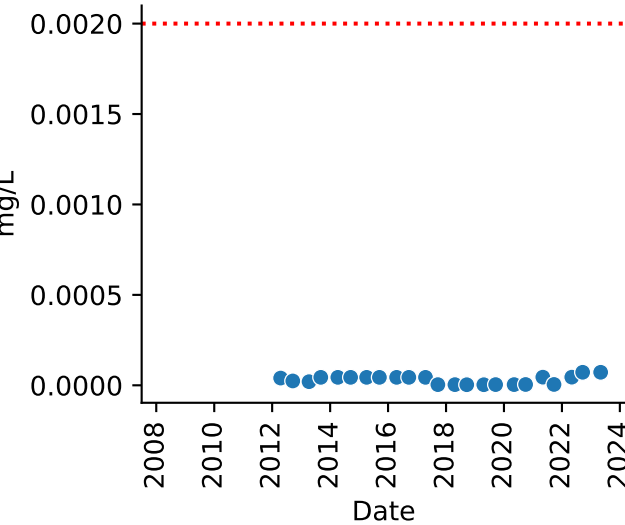
### COC = Cd



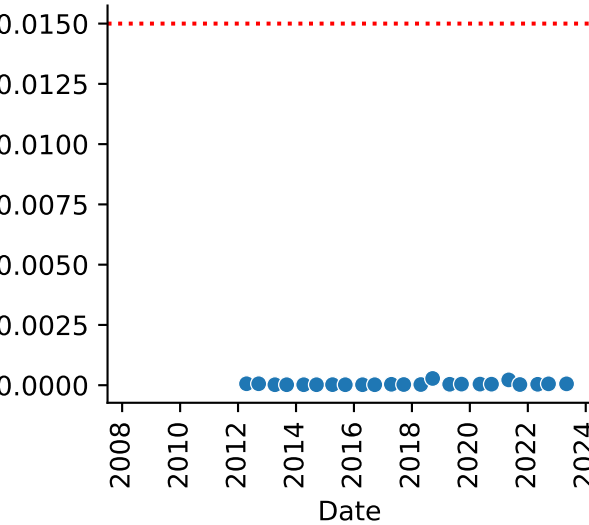
### COC = Cu



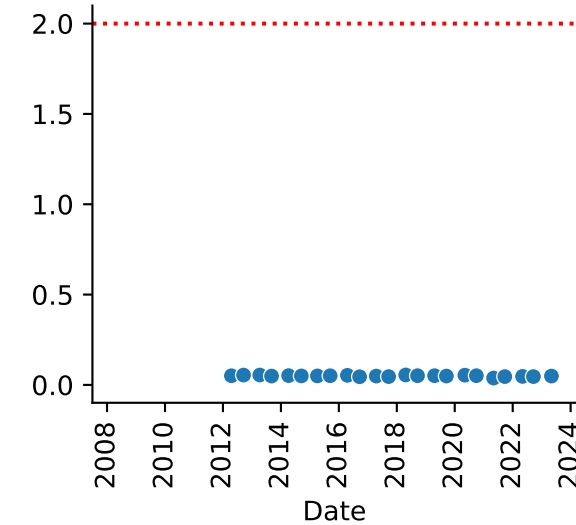
### COC = Hg



### COC = Pb



### COC = Zn

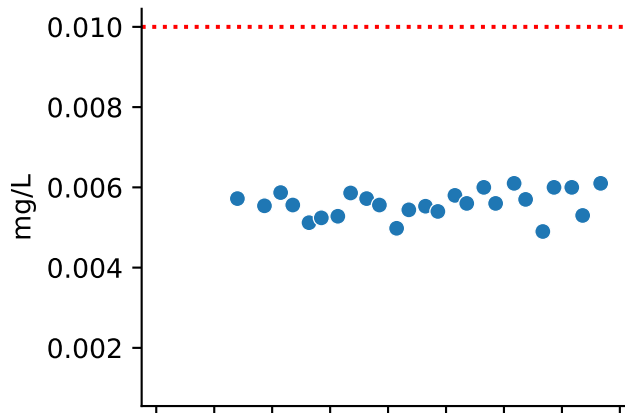


Exceeds GW Std  
● False

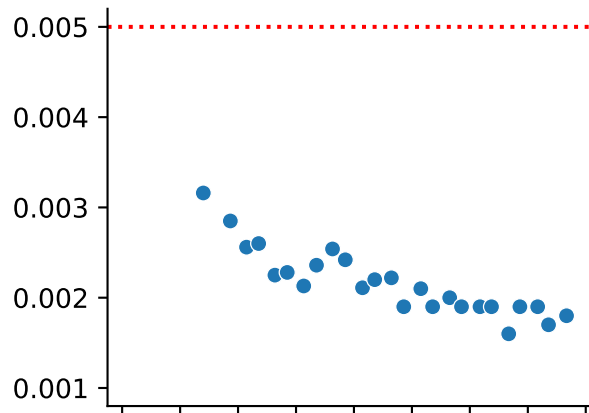


# Well = AMW-13C

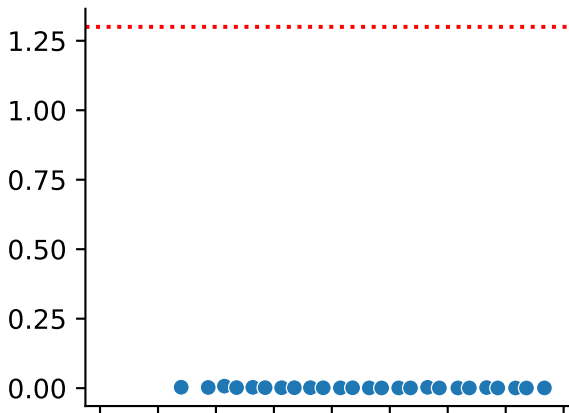
## COC = As



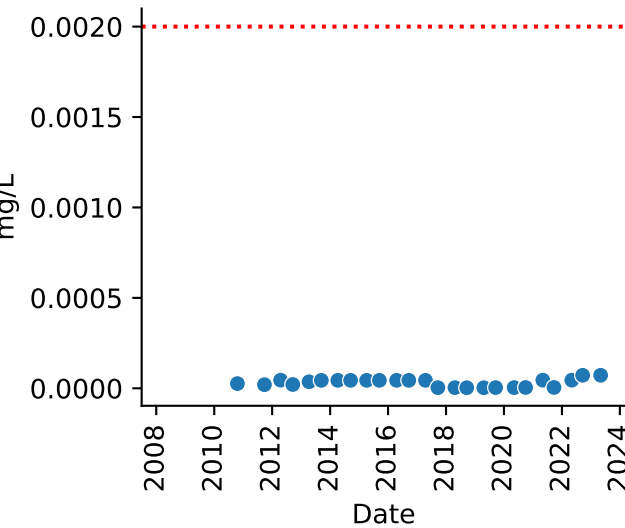
## COC = Cd



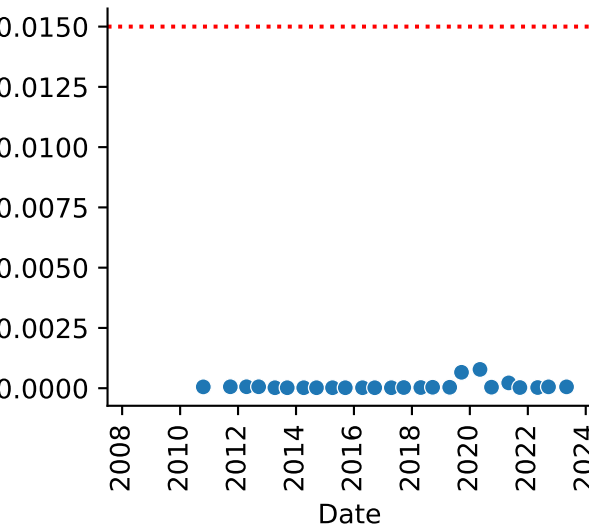
## COC = Cu



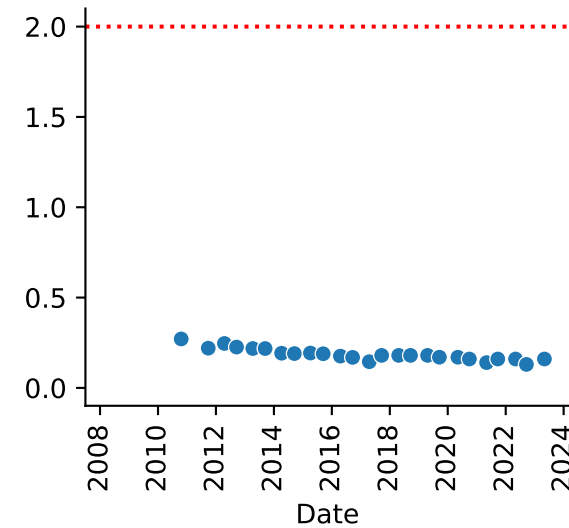
## COC = Hg



## COC = Pb



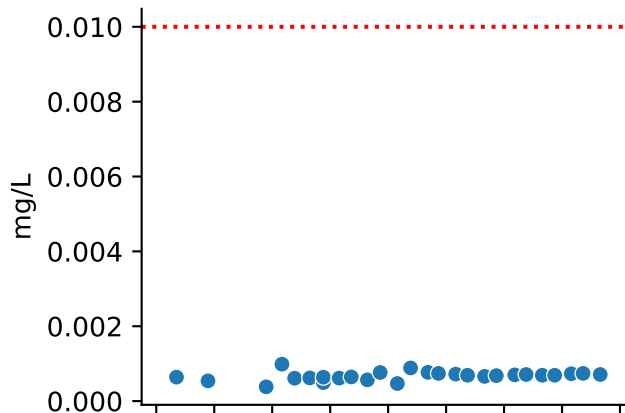
## COC = Zn



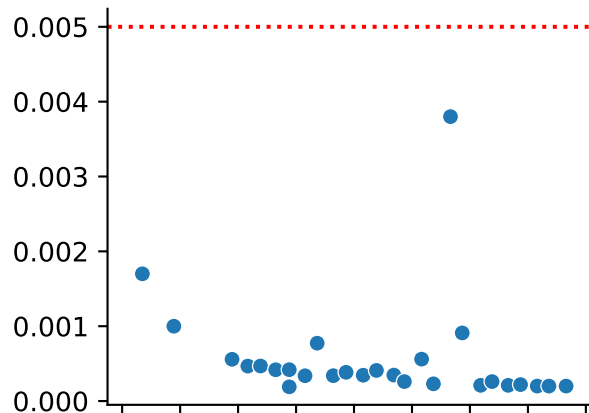
Exceeds GW Std  
● False

# Well = BPS07-03A

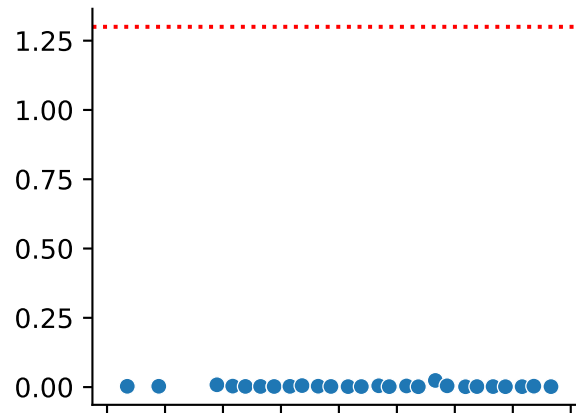
## COC = As



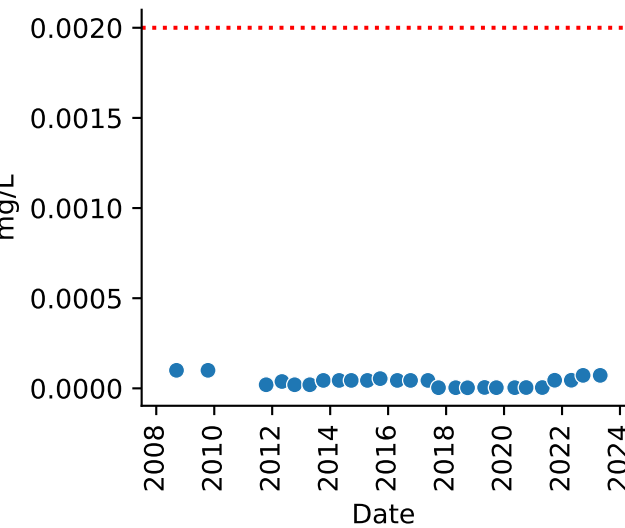
## COC = Cd



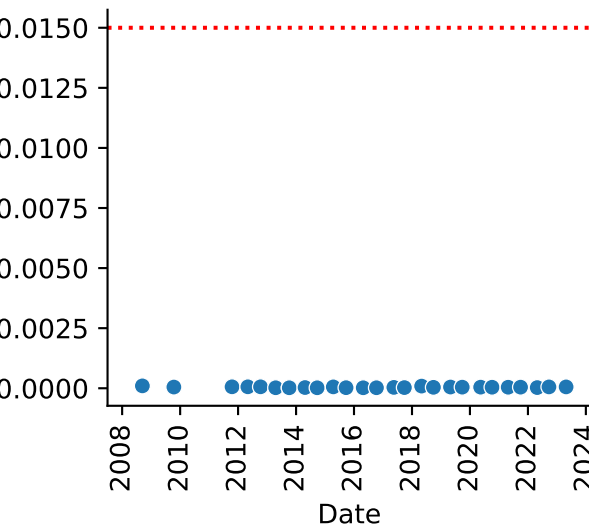
## COC = Cu



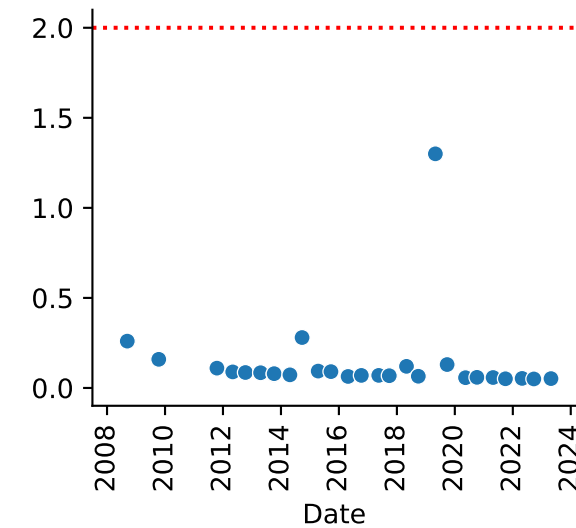
## COC = Hg



## COC = Pb



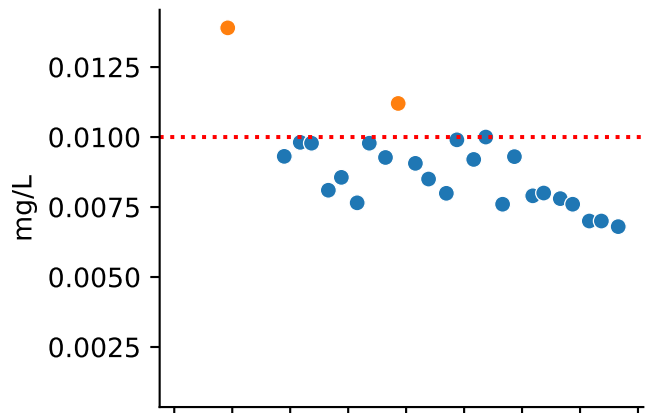
## COC = Zn



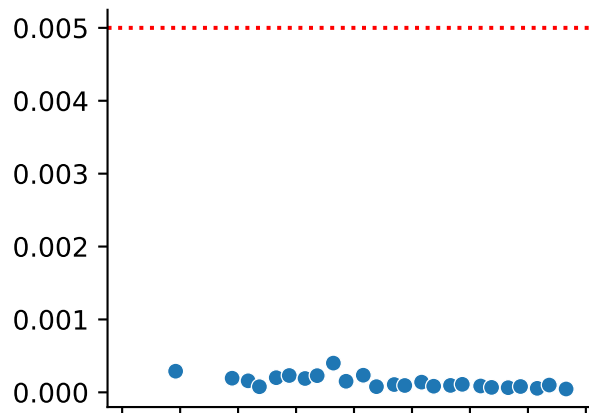
Exceeds GW Std  
● False

Well = BPS07-07

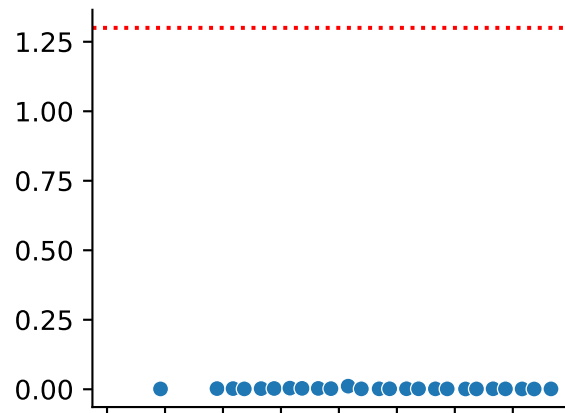
COC = As



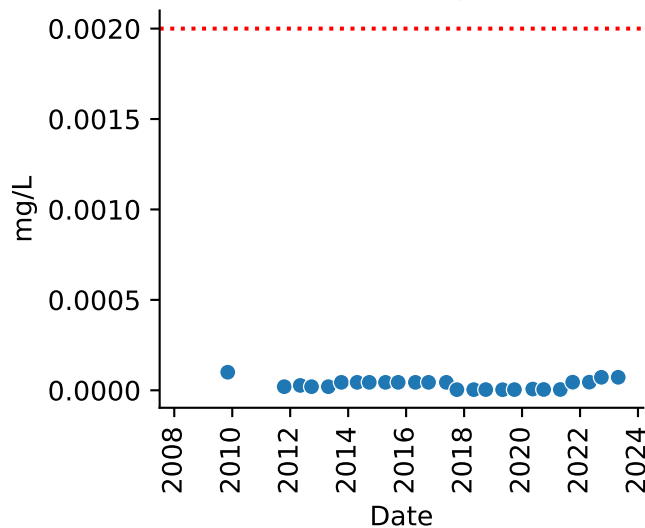
COC = Cd



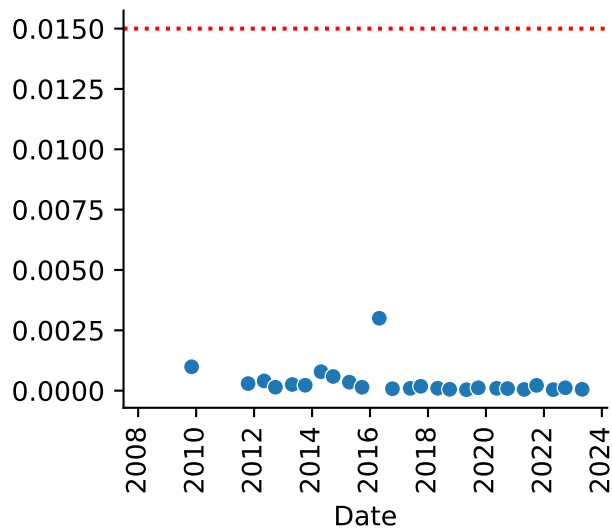
COC = Cu



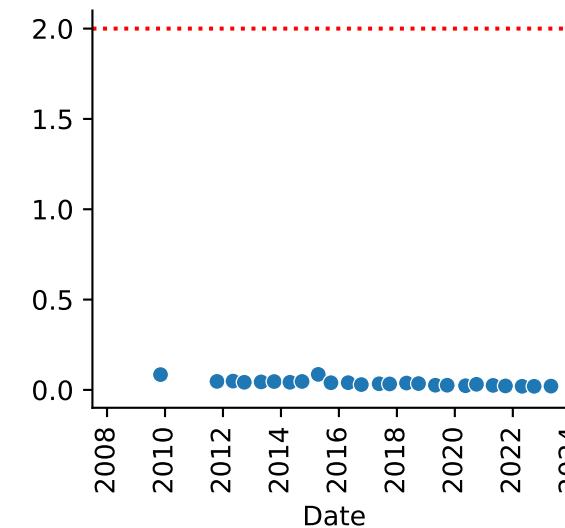
COC = Hg



COC = Pb



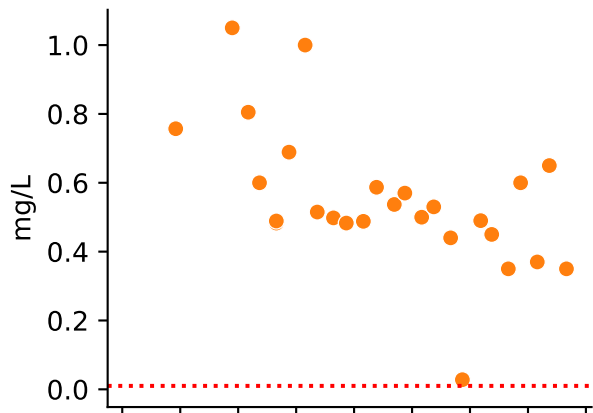
COC = Zn



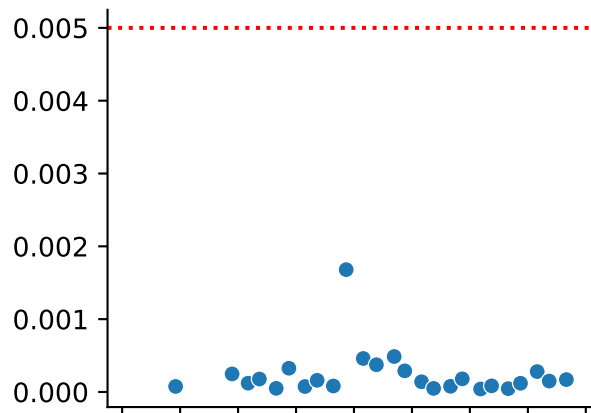
Exceeds GW Std  
● False  
● True

Well = BPS07-21

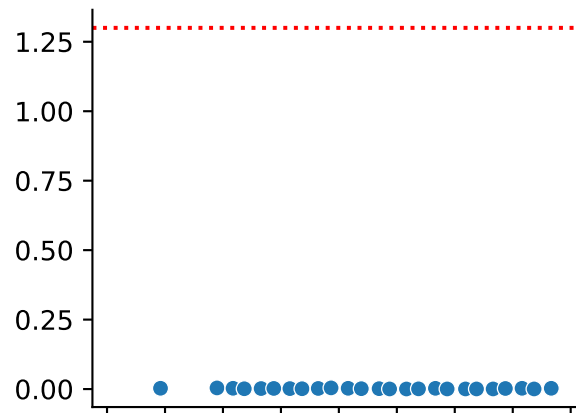
COC = As



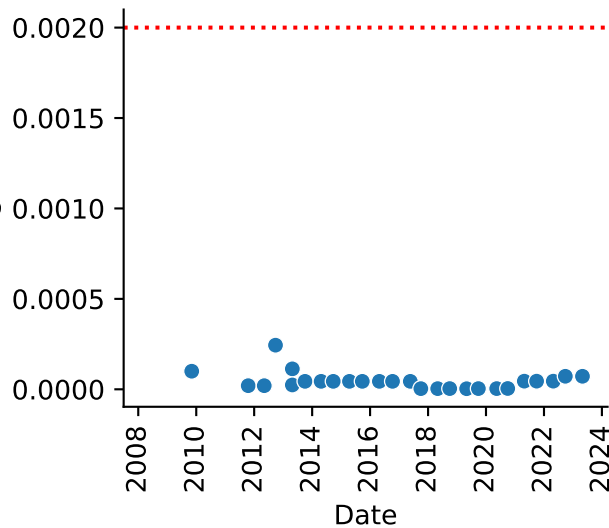
COC = Cd



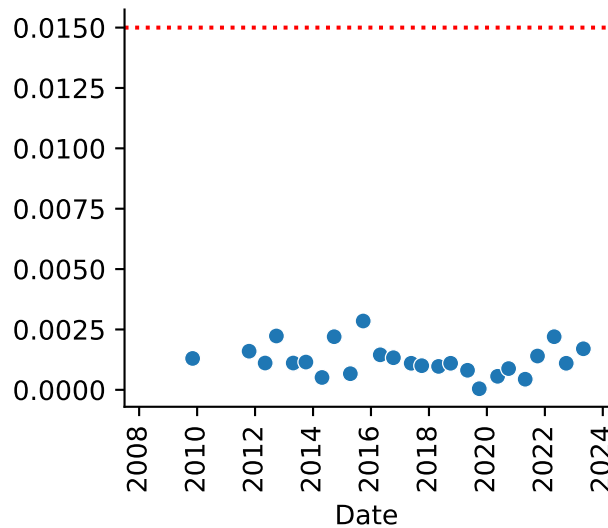
COC = Cu



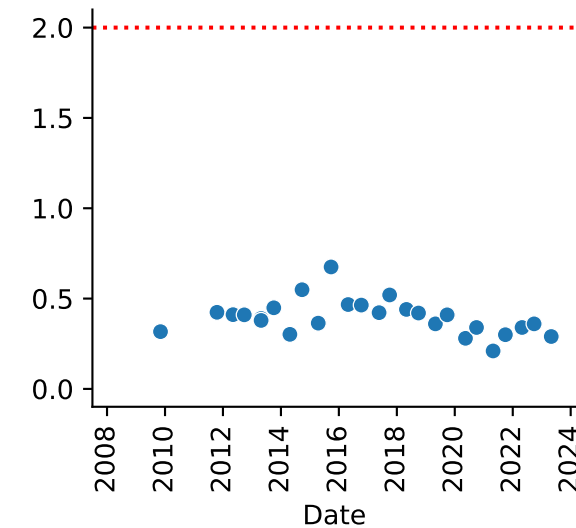
COC = Hg



COC = Pb



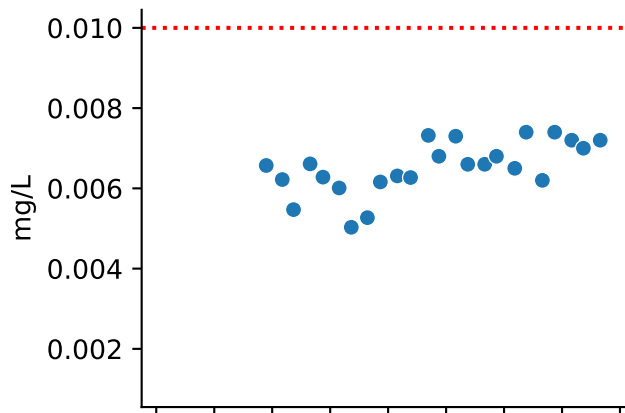
COC = Zn



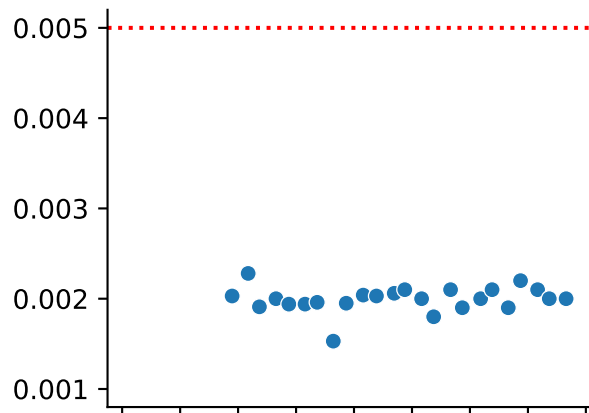
Exceeds GW Std  
● False  
● True

# Well = BPS07-21B

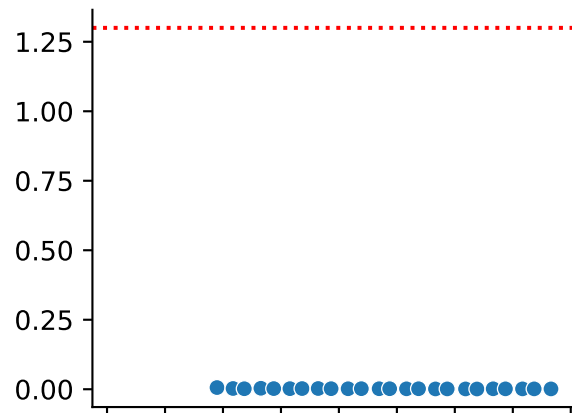
## COC = As



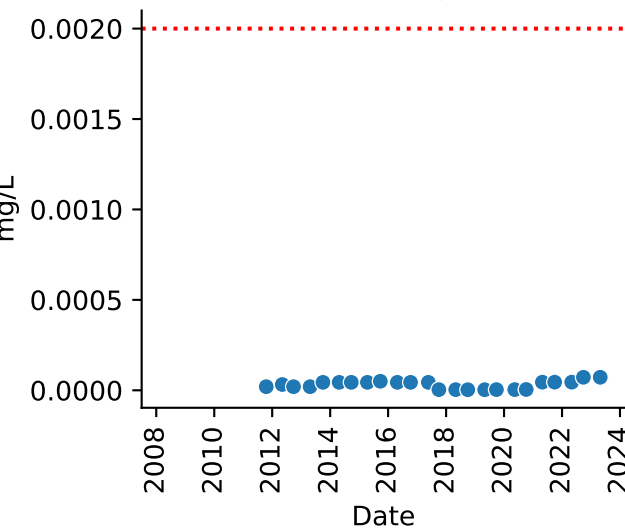
## COC = Cd



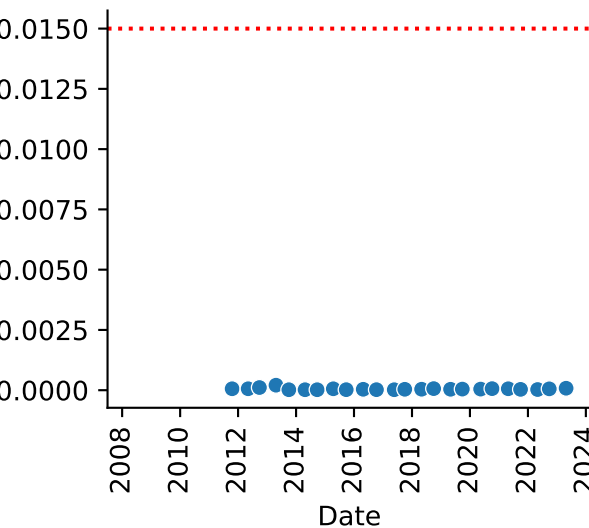
## COC = Cu



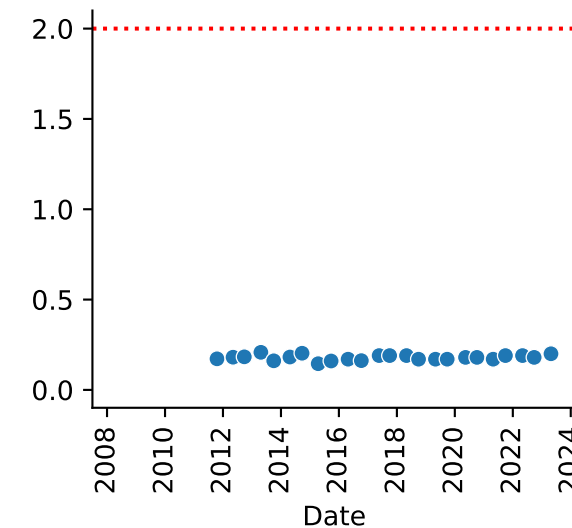
## COC = Hg



## COC = Pb



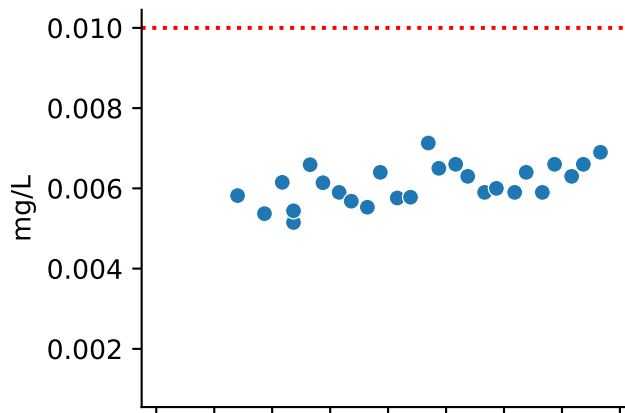
## COC = Zn



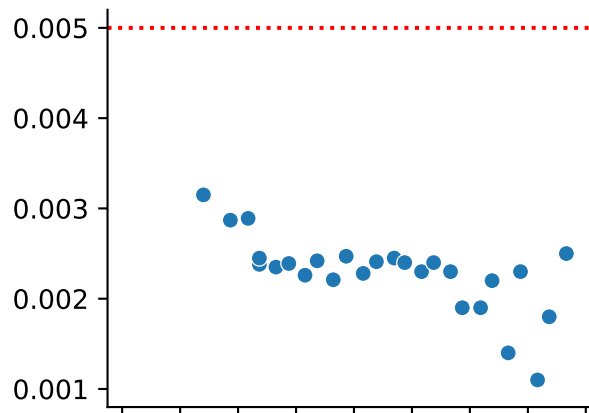
Exceeds GW Std  
● False

# Well = BPS07-21C

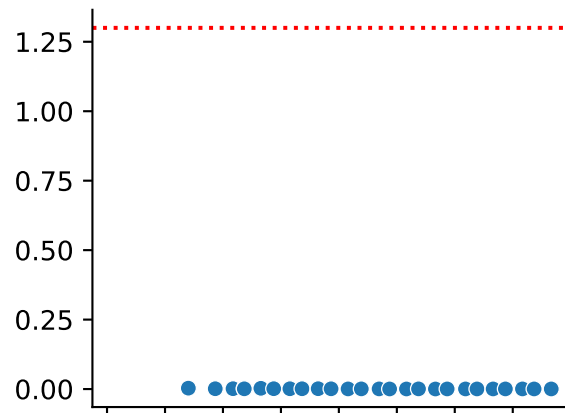
## COC = As



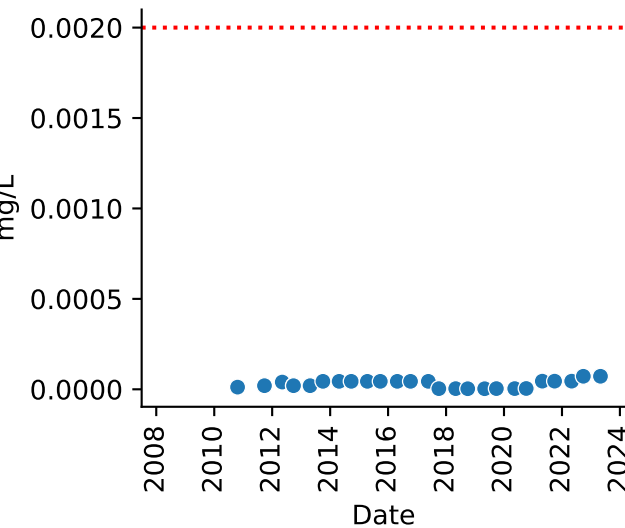
## COC = Cd



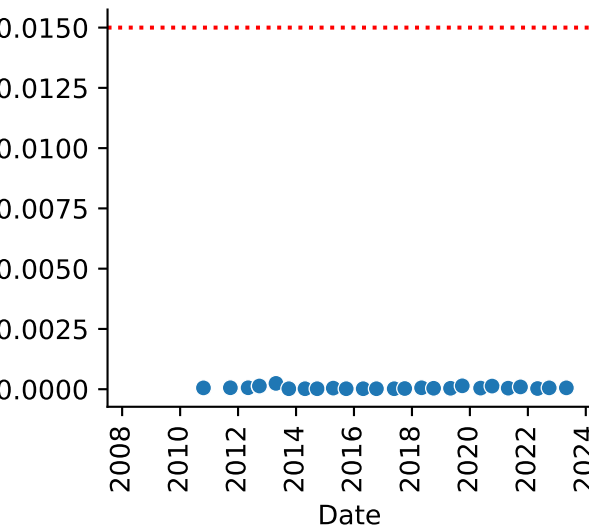
## COC = Cu



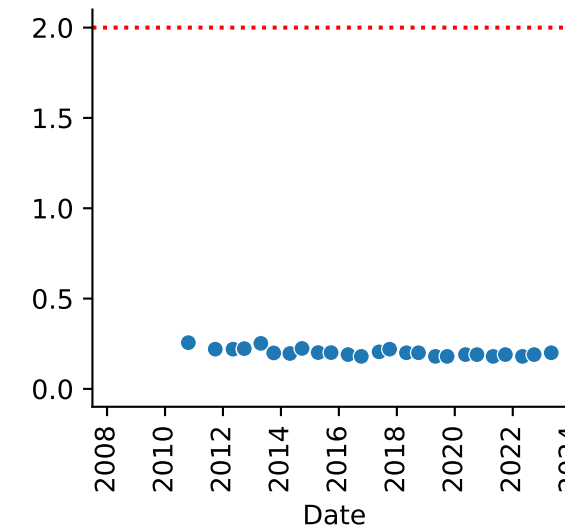
## COC = Hg



## COC = Pb



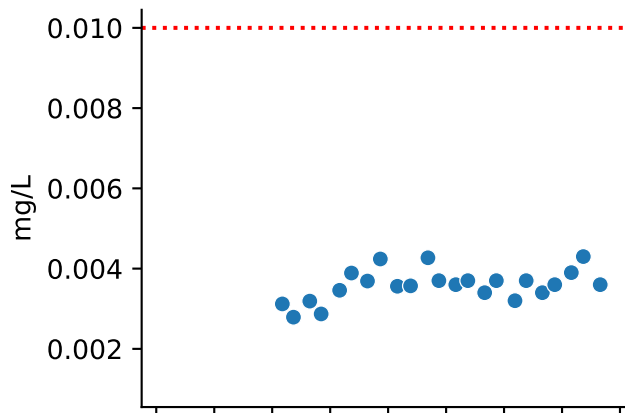
## COC = Zn



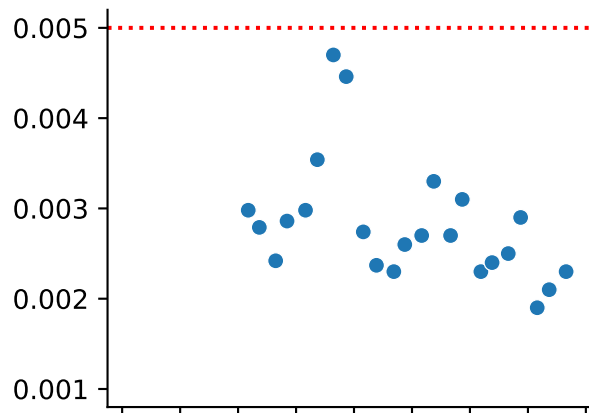
Exceeds GW Std  
● False

# Well = BPS07-22B

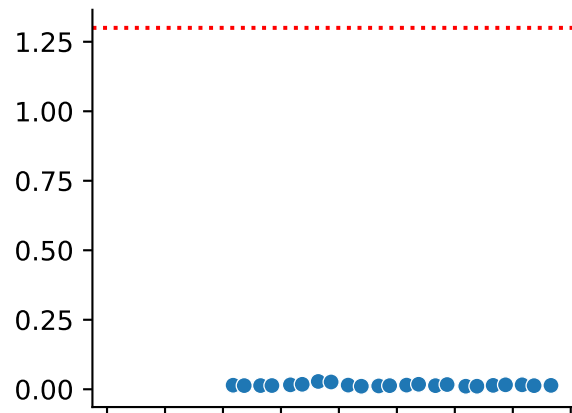
### COC = As



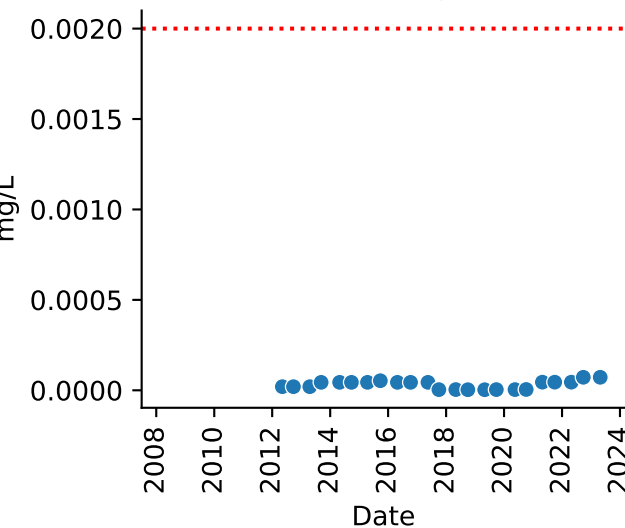
### COC = Cd



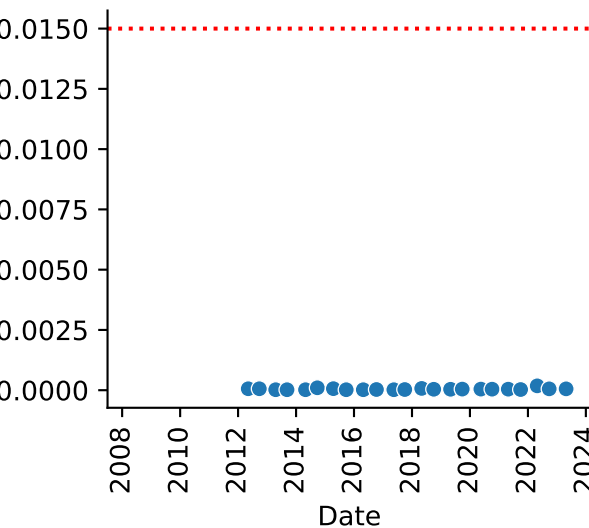
### COC = Cu



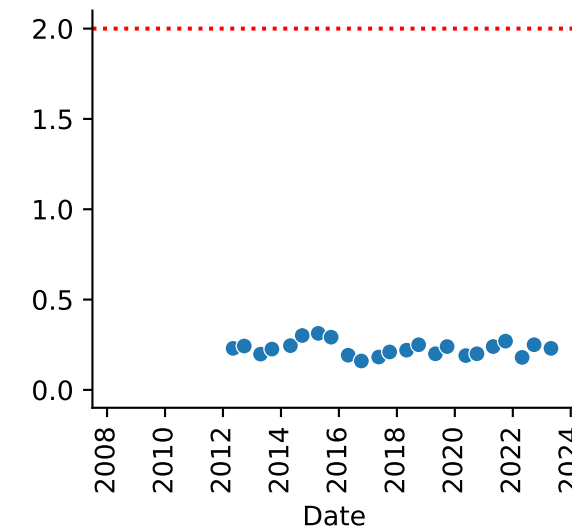
### COC = Hg



### COC = Pb



### COC = Zn



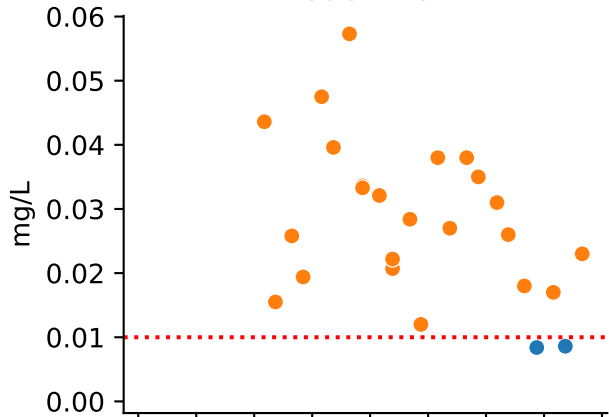
Exceeds GW Std  
● False



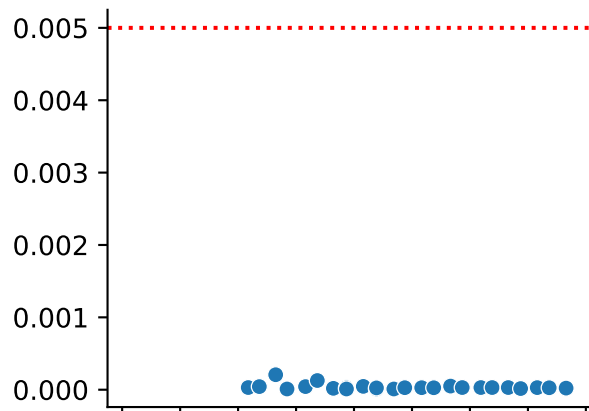


Well = BPS07-22R

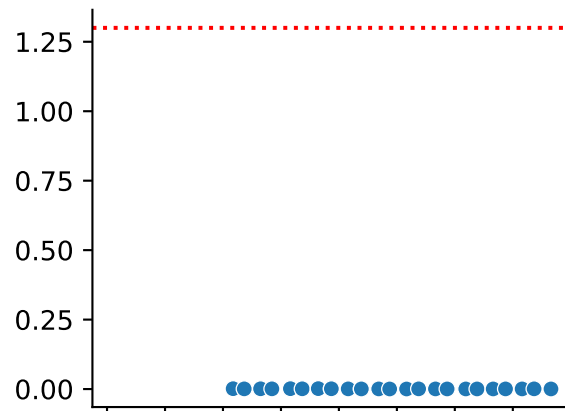
COC = As



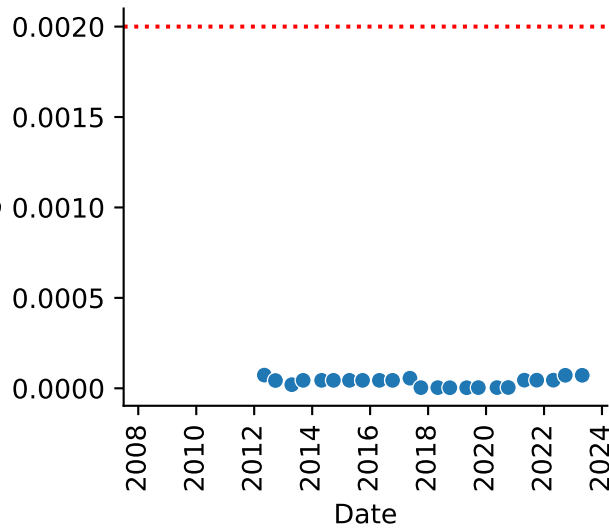
COC = Cd



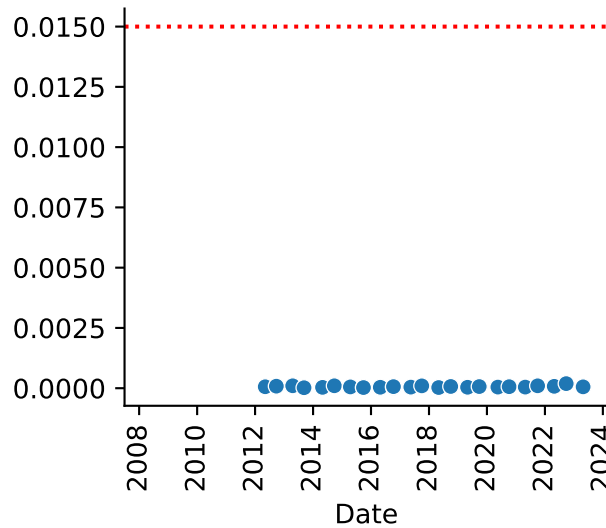
COC = Cu



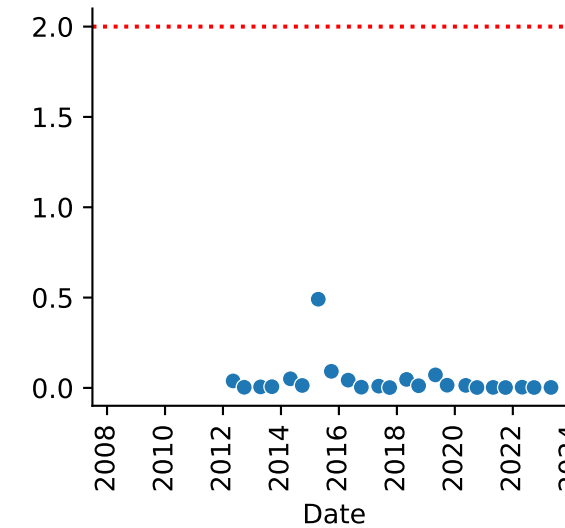
COC = Hg



COC = Pb



COC = Zn

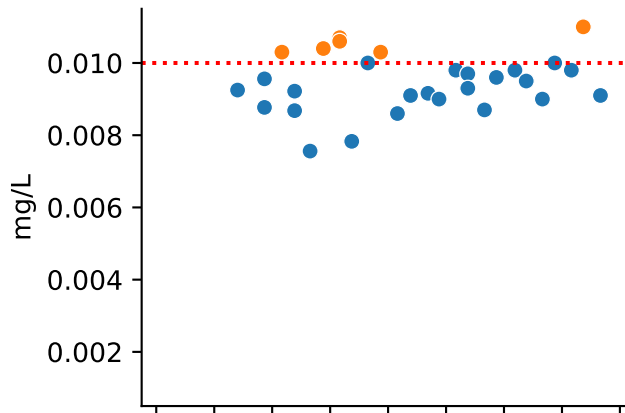


Exceeds GW Std

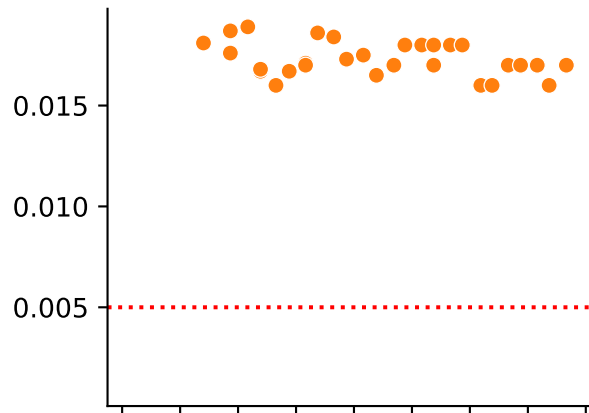
- False
- True

Well = BPS07-24

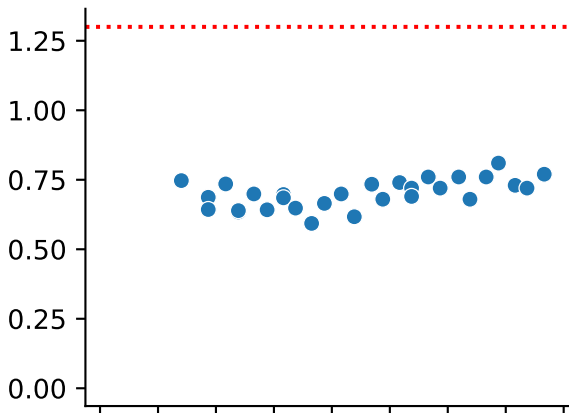
COC = As



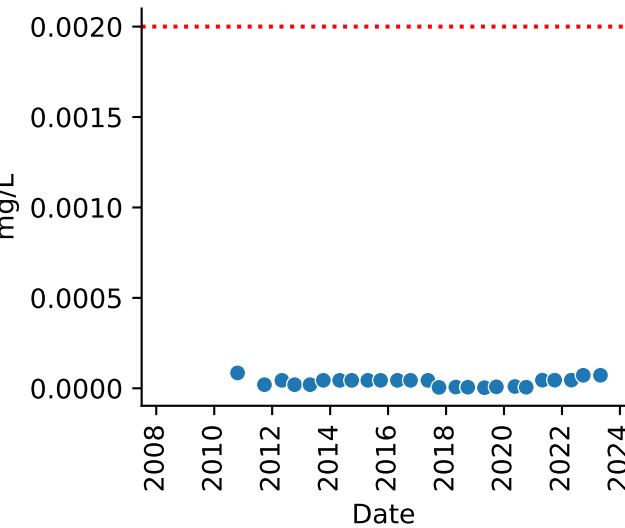
COC = Cd



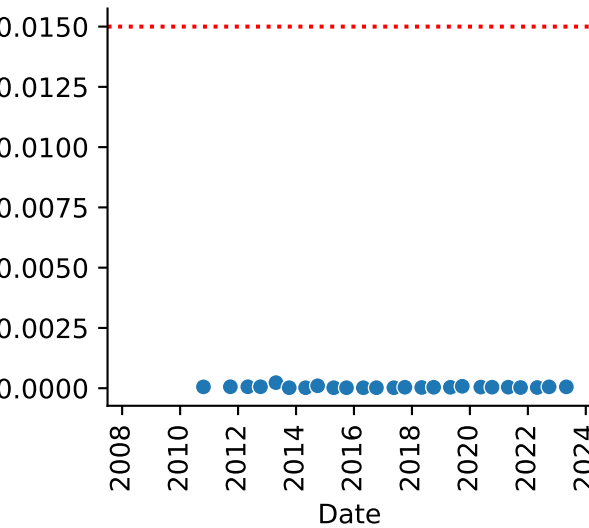
COC = Cu



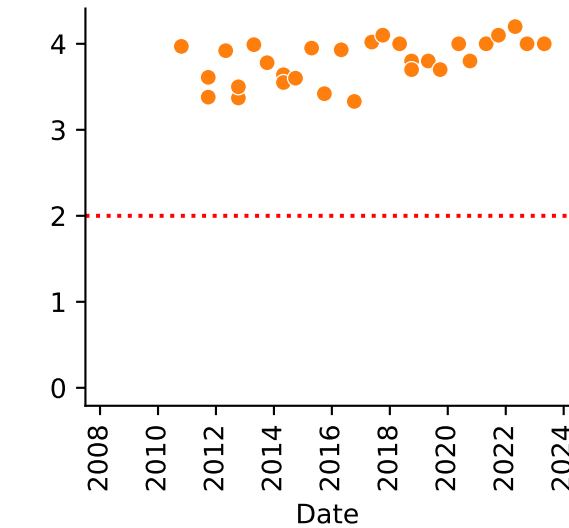
COC = Hg



COC = Pb



COC = Zn



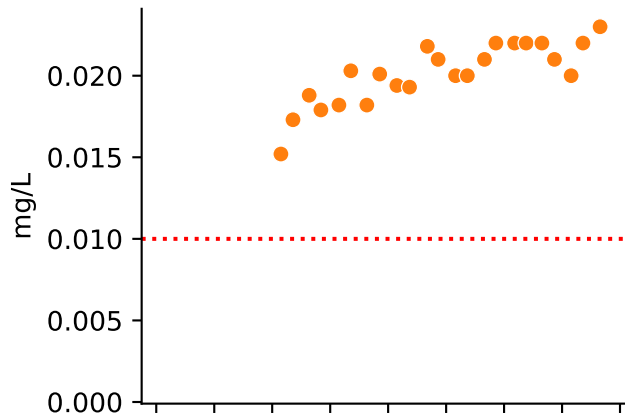
Exceeds GW Std

● False

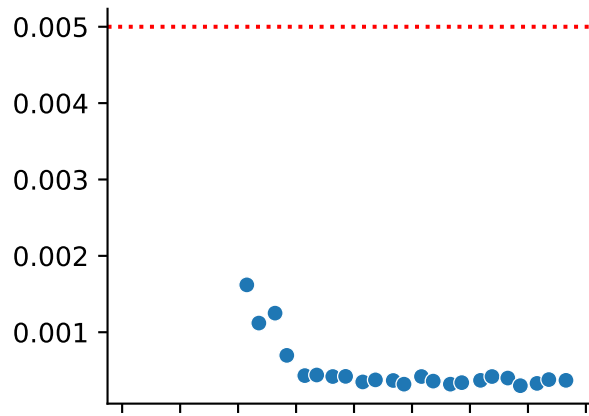
● True

Well = BPS11-04

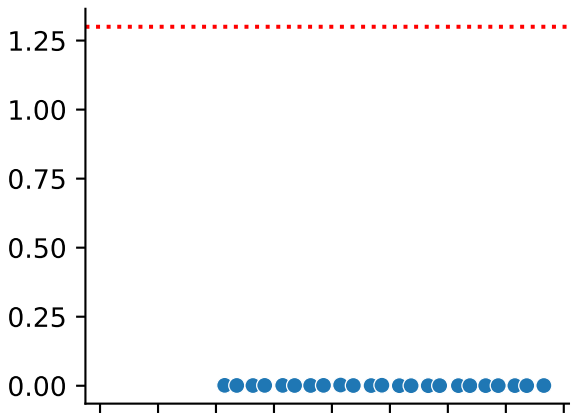
COC = As



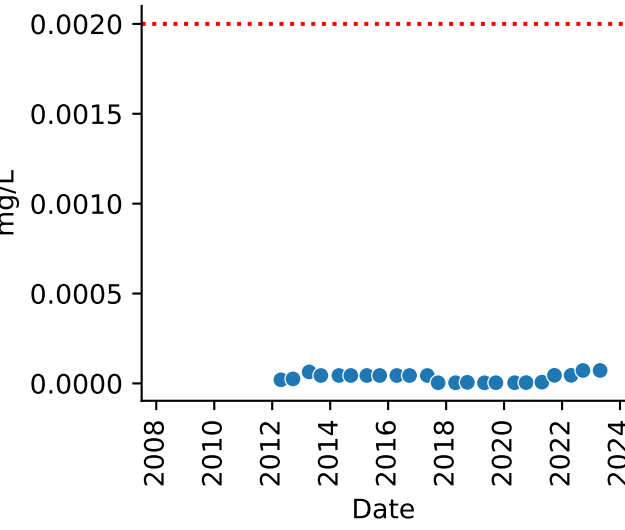
COC = Cd



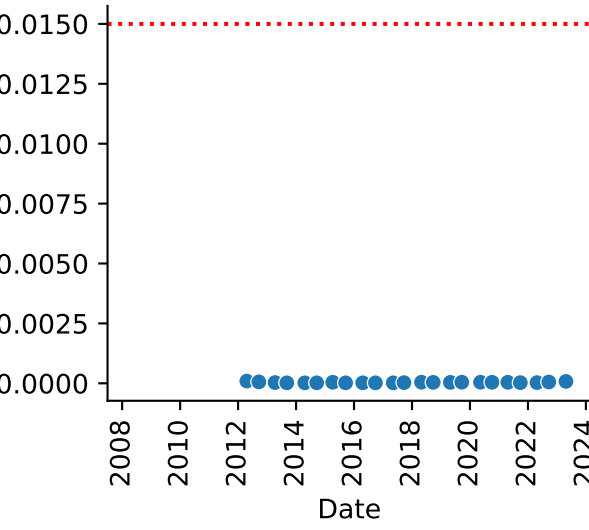
COC = Cu



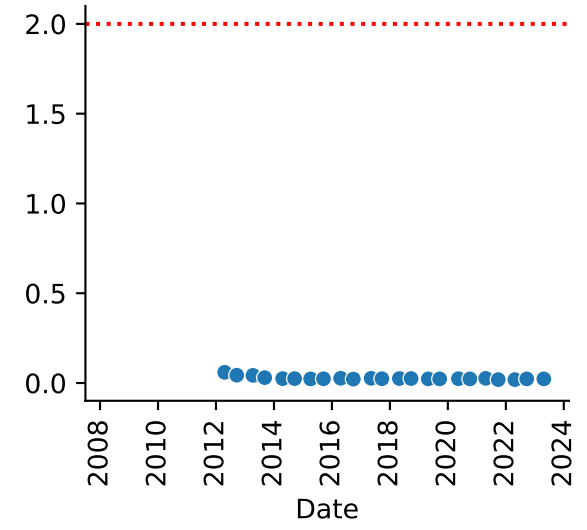
COC = Hg



COC = Pb



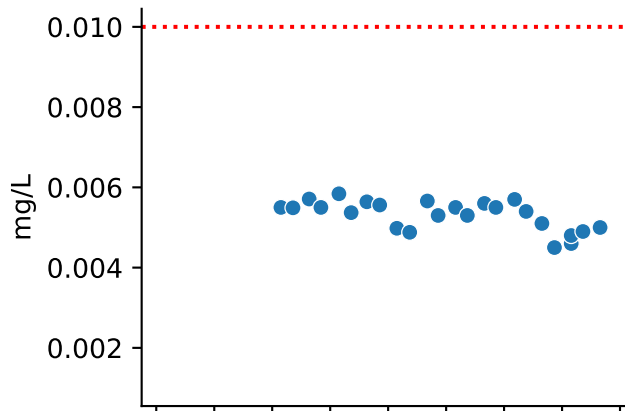
COC = Zn



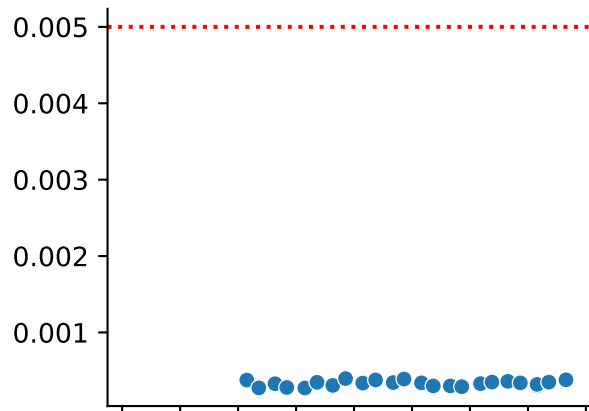
Exceeds GW Std  
● False  
● True

Well = BPS11-09

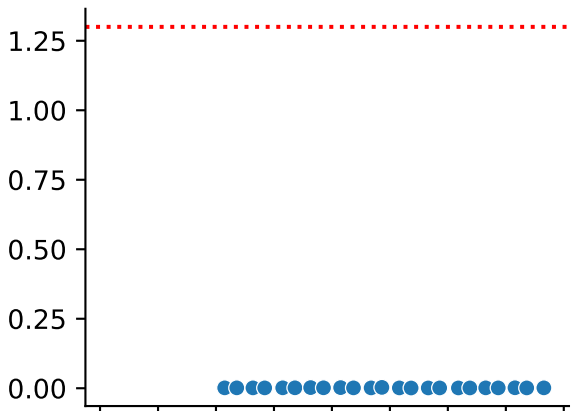
COC = As



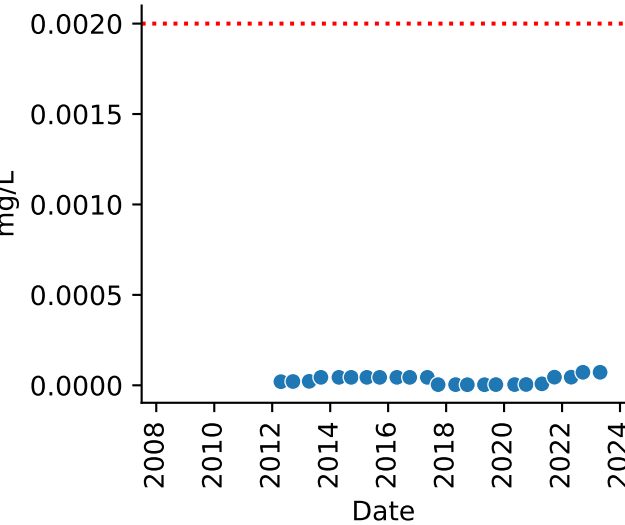
COC = Cd



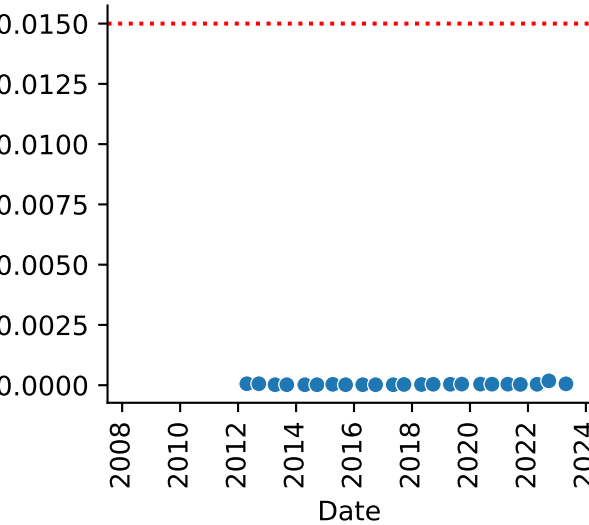
COC = Cu



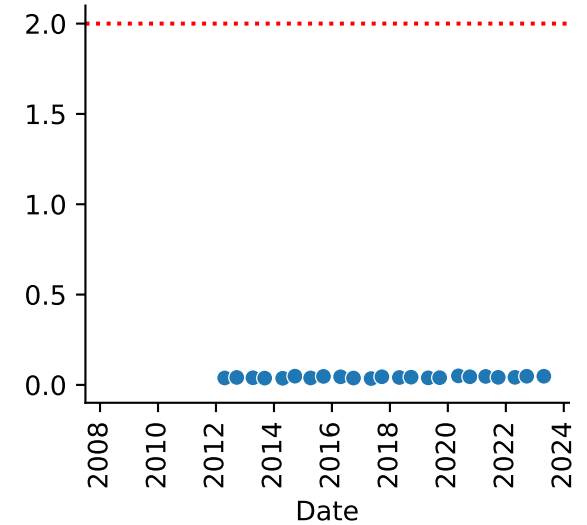
COC = Hg



COC = Pb



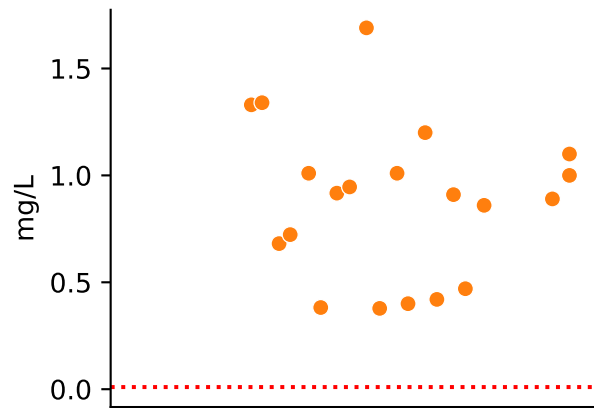
COC = Zn



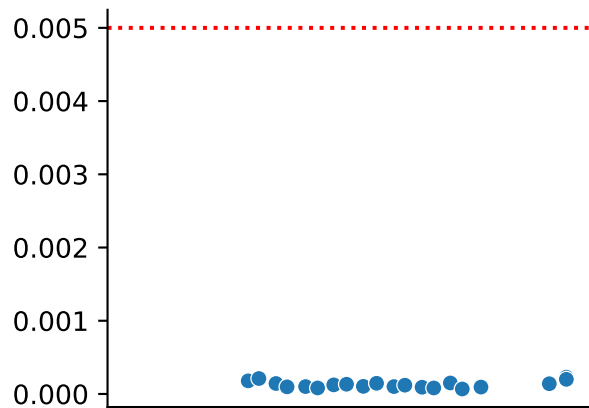
Exceeds GW Std  
● False

# Well = BPS11-10A

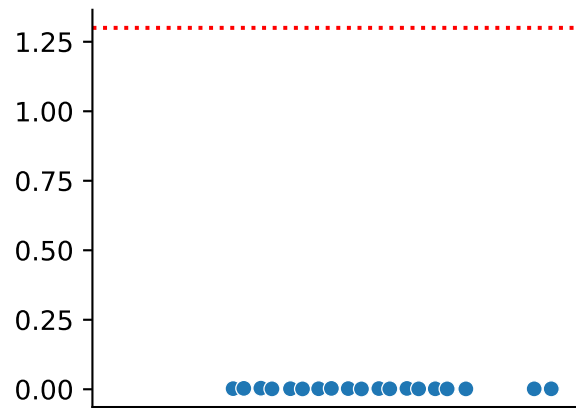
## COC = As



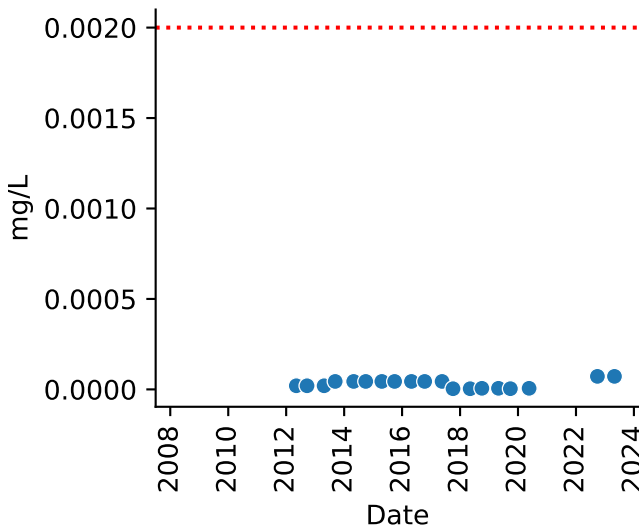
## COC = Cd



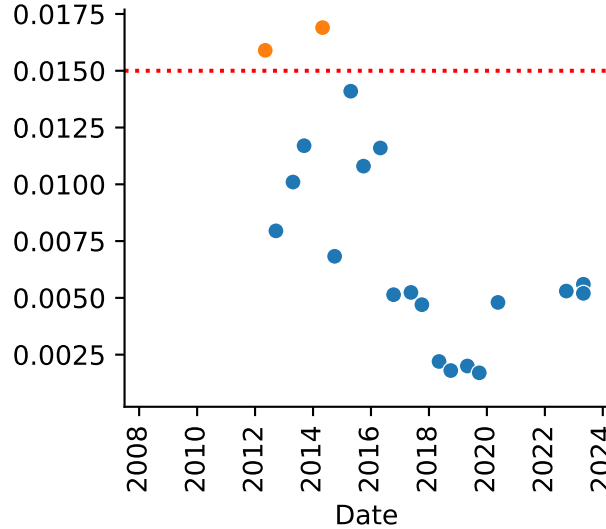
## COC = Cu



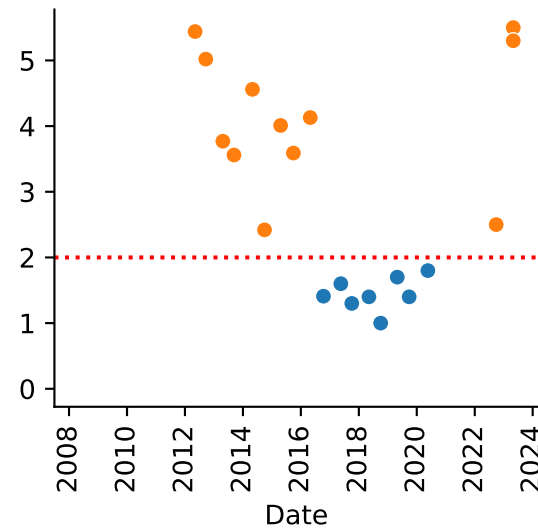
## COC = Hg



## COC = Pb



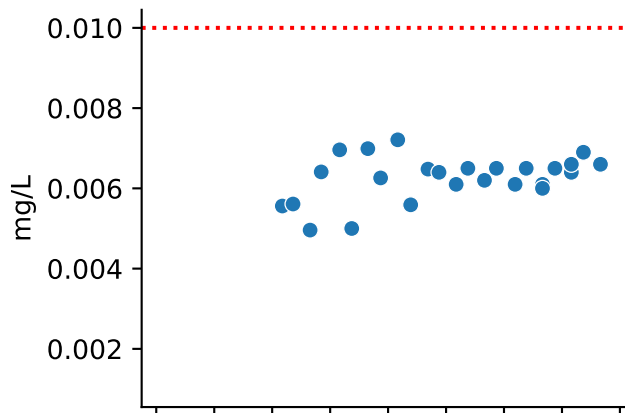
## COC = Zn



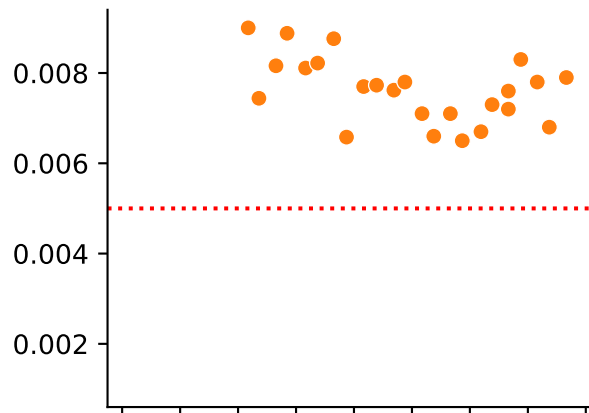
Exceeds GW Std  
● False  
● True

Well = BPS11-10B

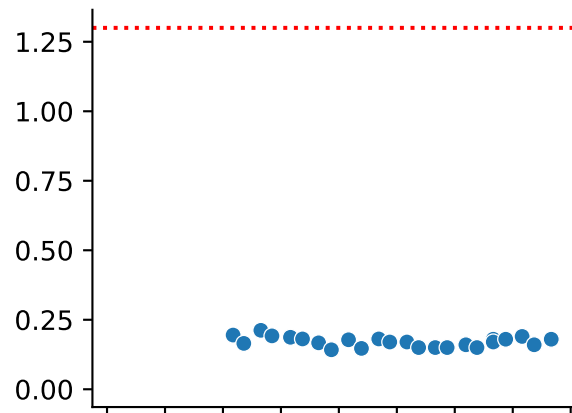
COC = As



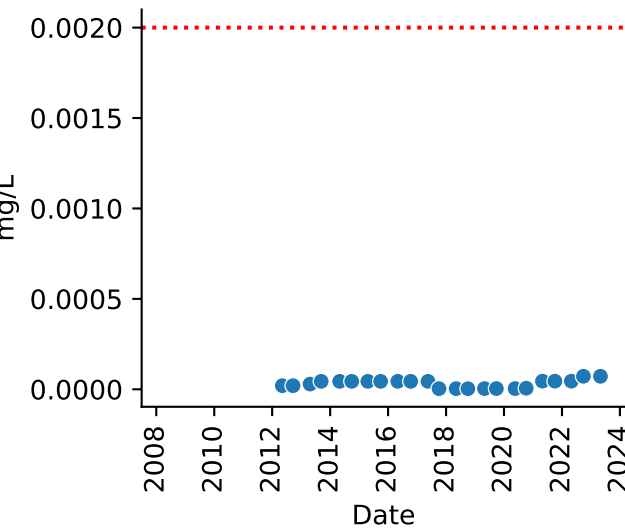
COC = Cd



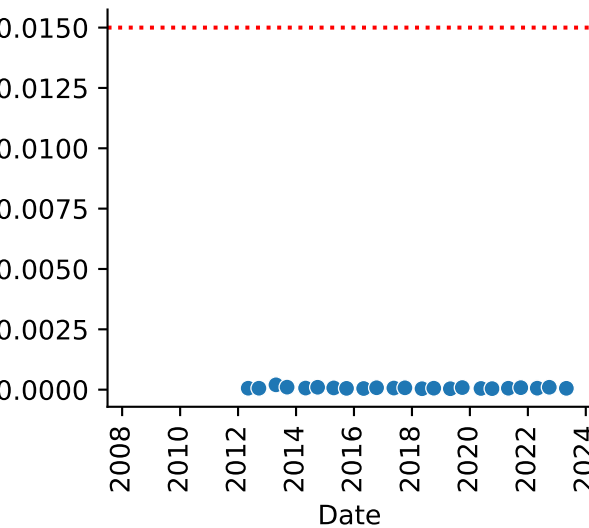
COC = Cu



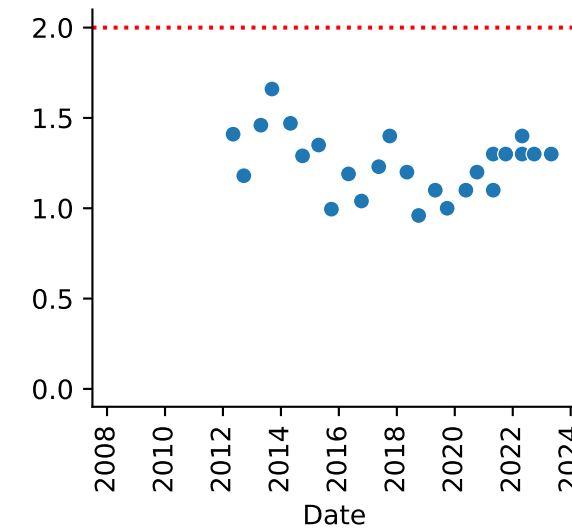
COC = Hg



COC = Pb



COC = Zn



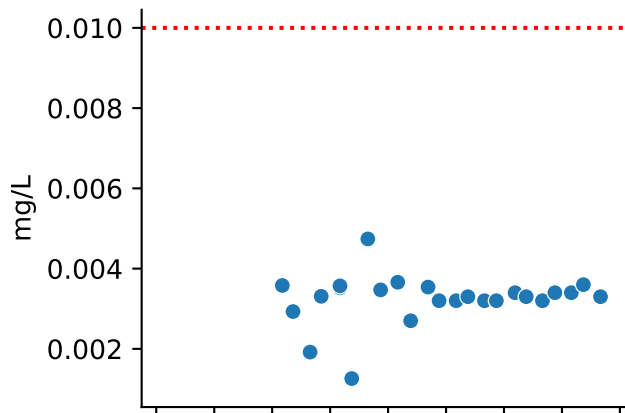
Exceeds GW Std

● False

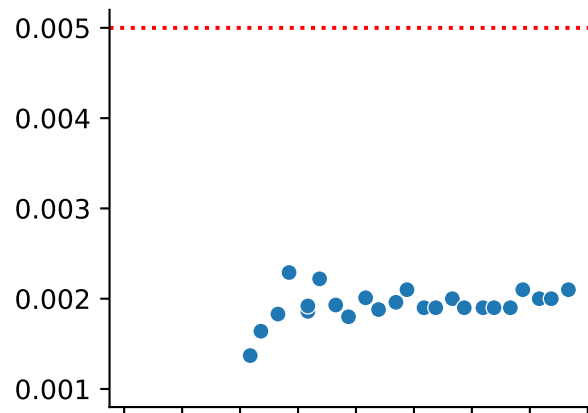
● True

# Well = BPS11-10C

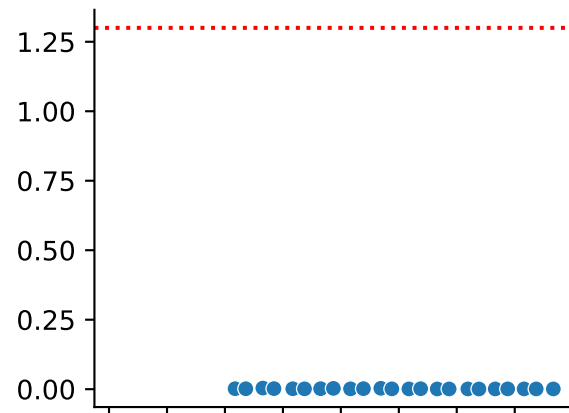
## COC = As



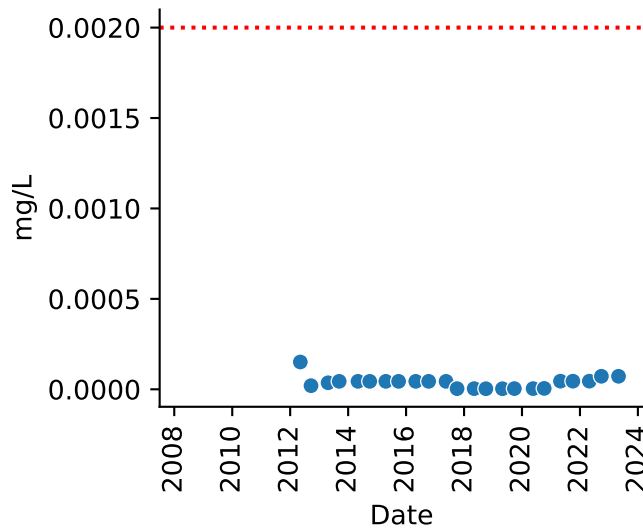
## COC = Cd



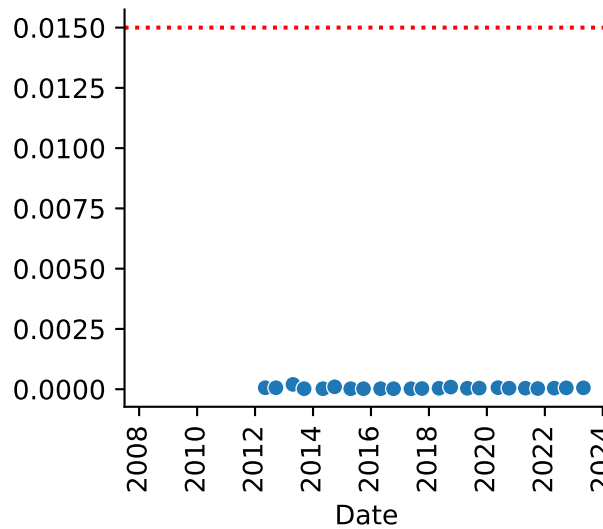
## COC = Cu



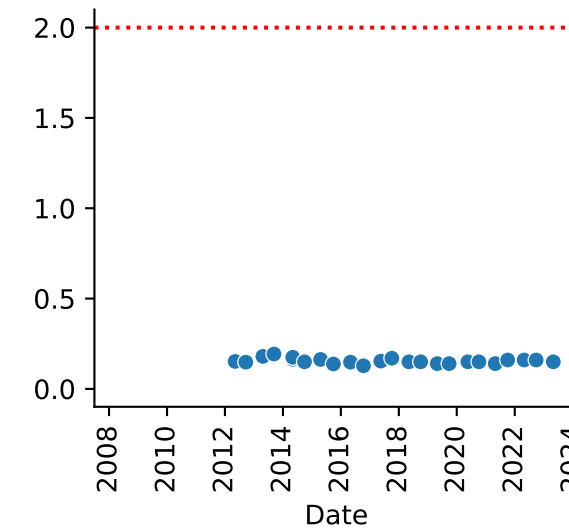
## COC = Hg



## COC = Pb



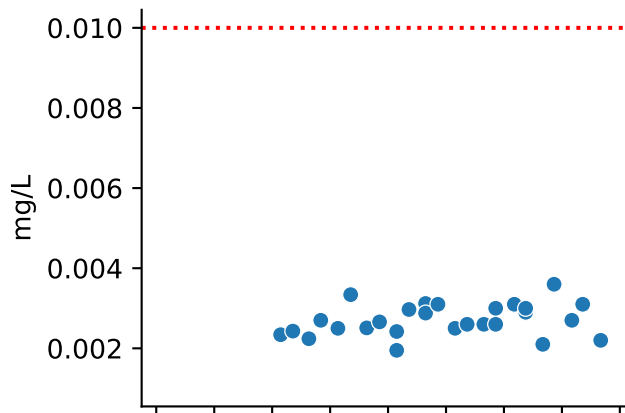
## COC = Zn



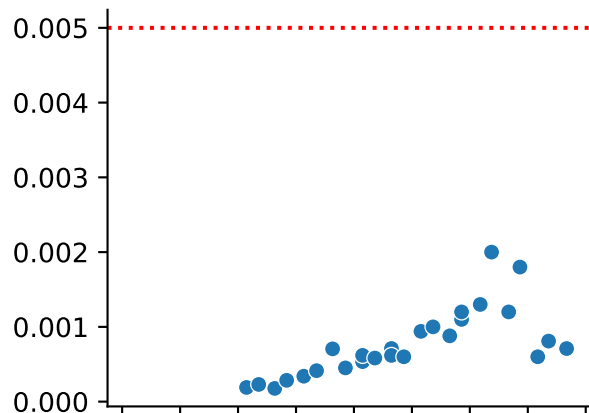
Exceeds GW Std  
● False

# Well = BPS11-11A1

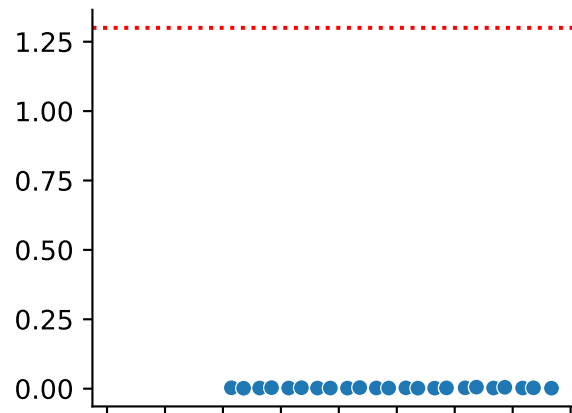
### COC = As



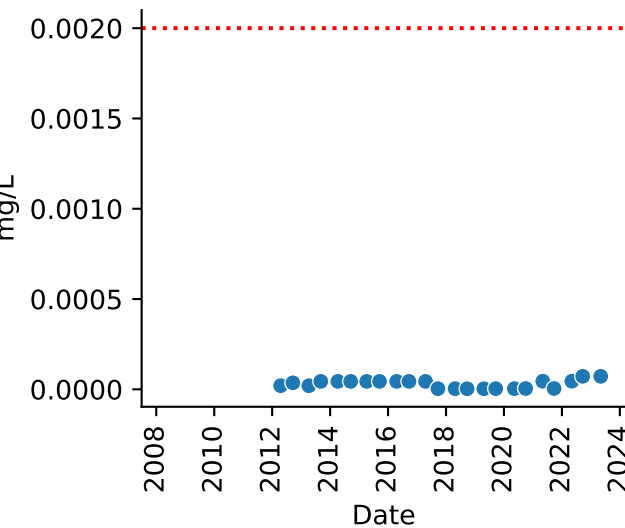
### COC = Cd



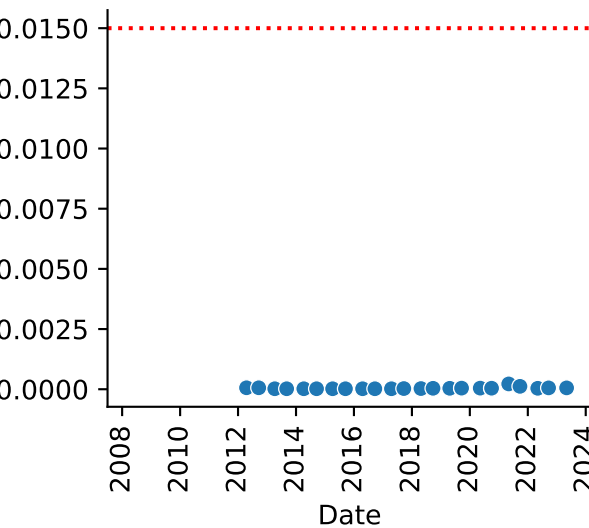
### COC = Cu



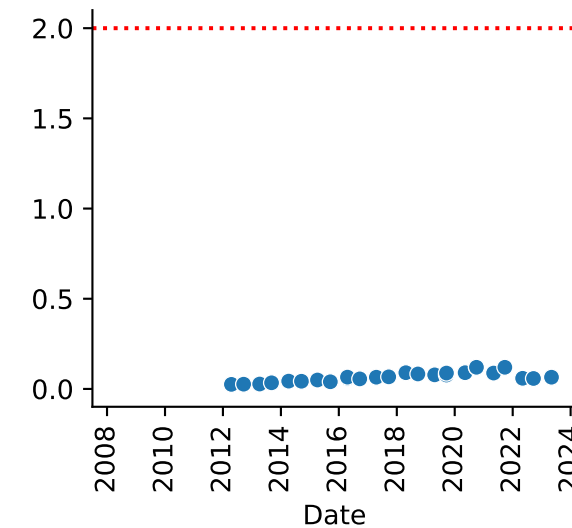
### COC = Hg



### COC = Pb



### COC = Zn

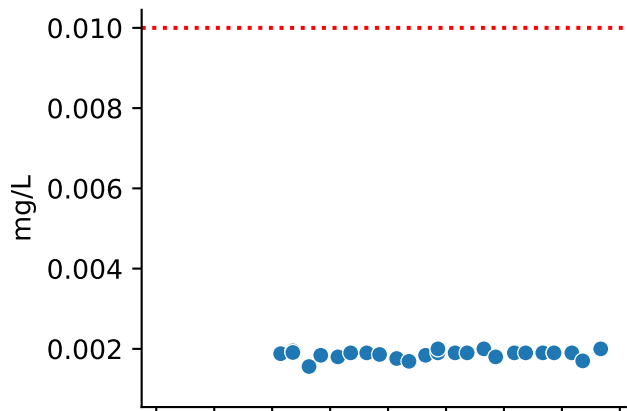


Exceeds GW Std  
● False

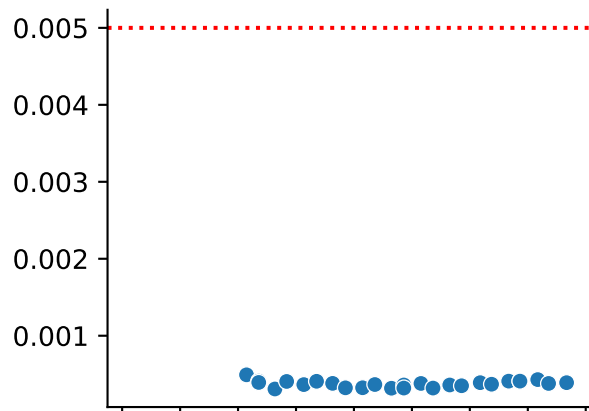


# Well = BPS11-11A2

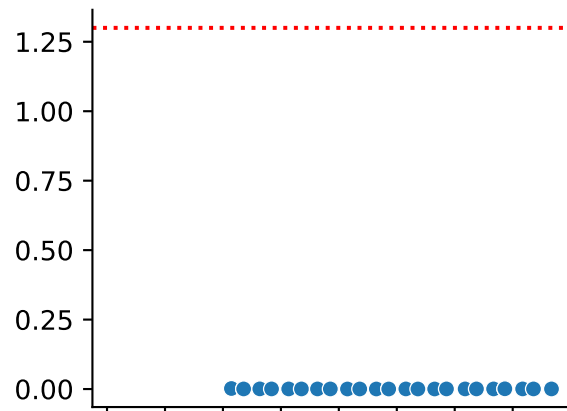
### COC = As



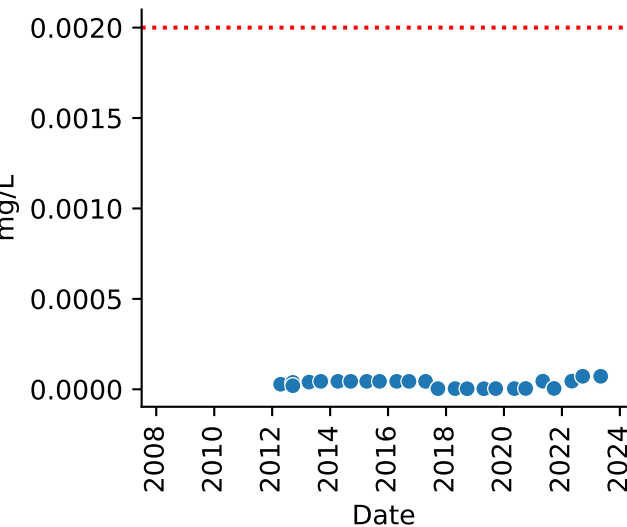
### COC = Cd



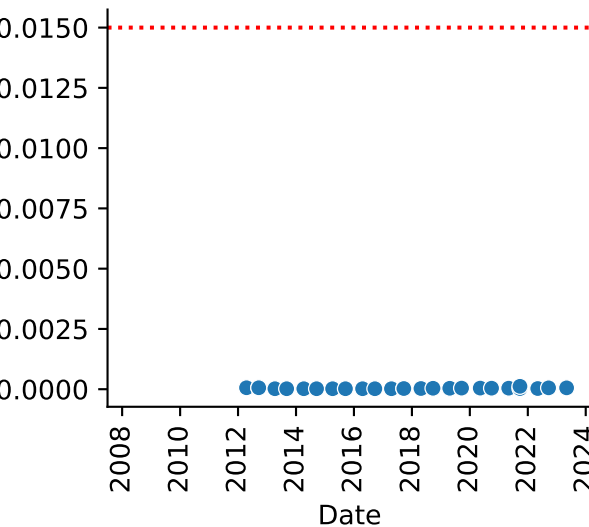
### COC = Cu



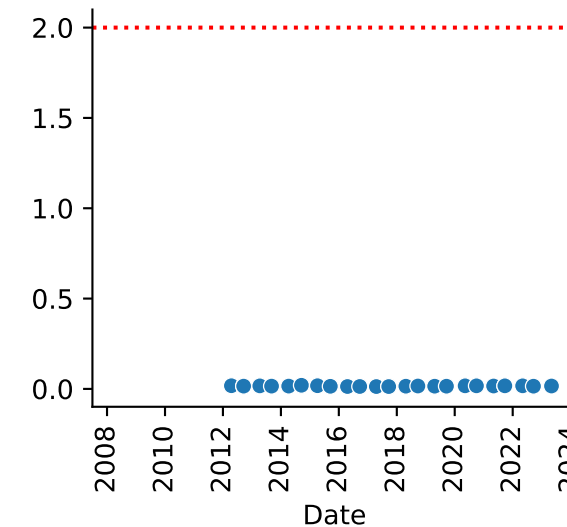
### COC = Hg



### COC = Pb



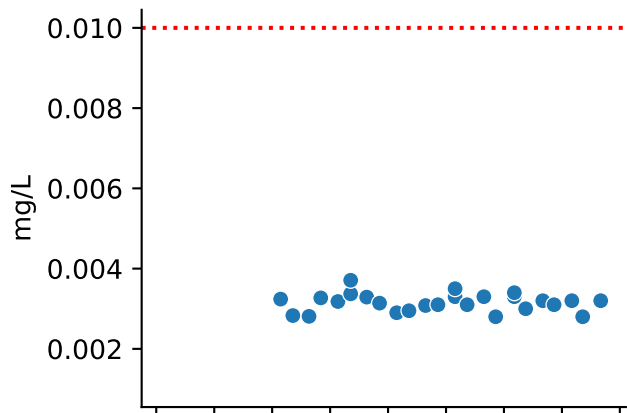
### COC = Zn



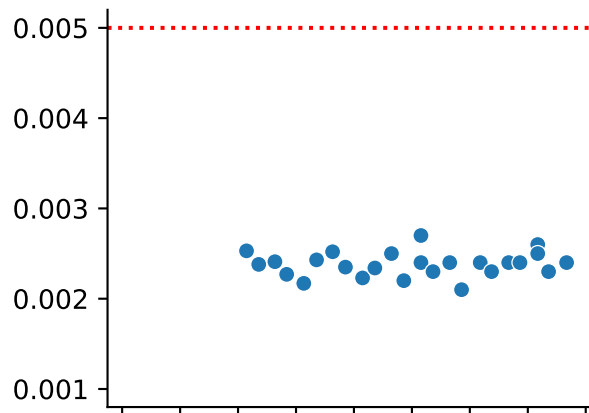
Exceeds GW Std  
● False

# Well = BPS11-11B

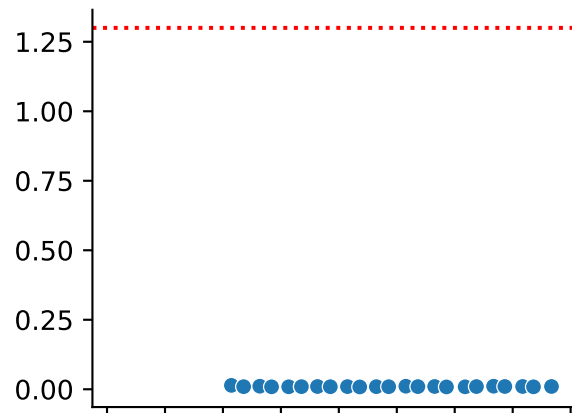
### COC = As



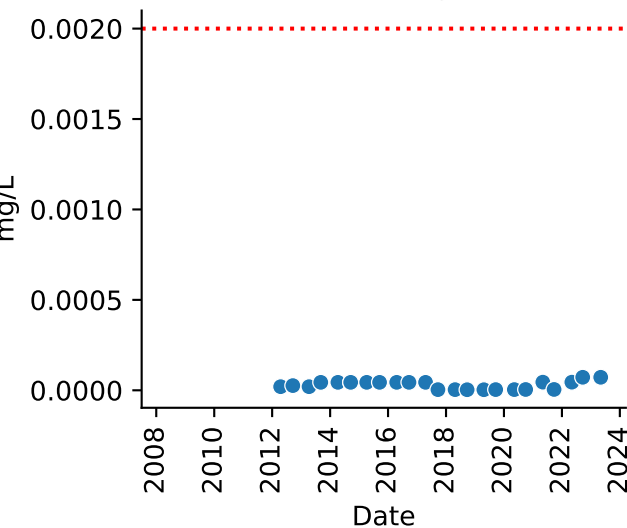
### COC = Cd



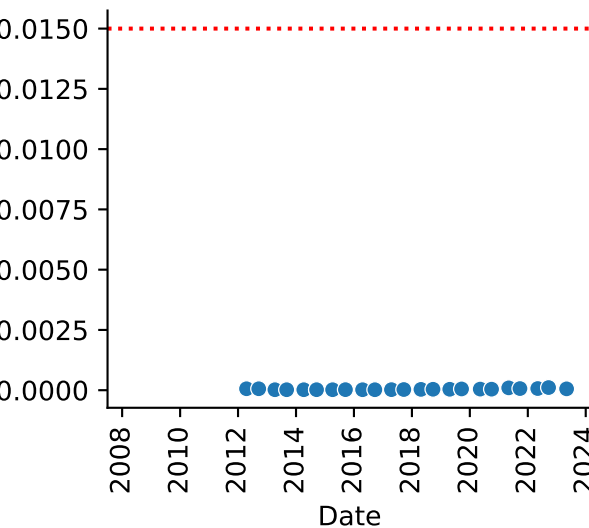
### COC = Cu



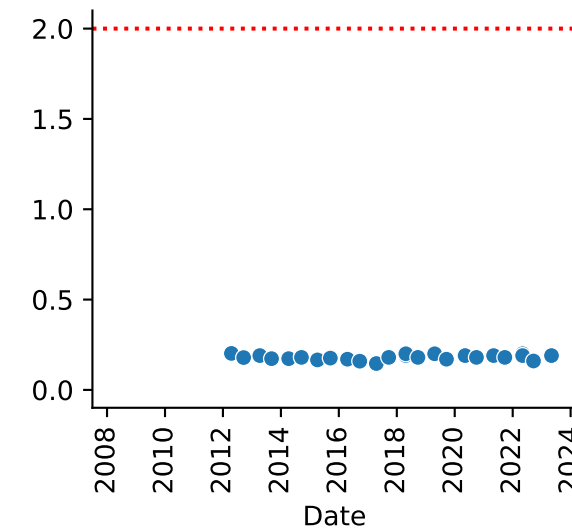
### COC = Hg



### COC = Pb



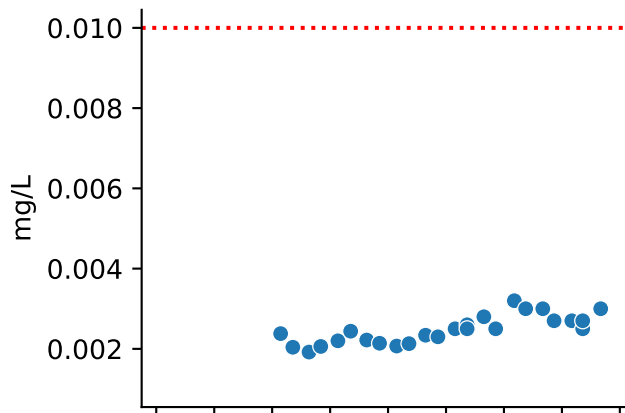
### COC = Zn



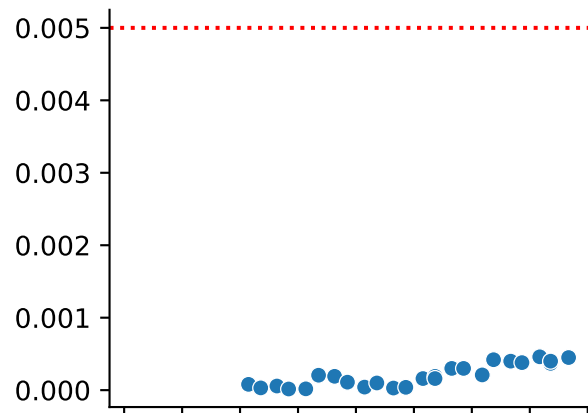
Exceeds GW Std  
● False

# Well = BPS11-11C

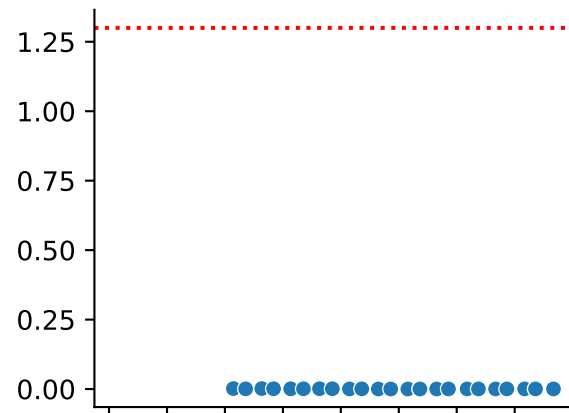
## COC = As



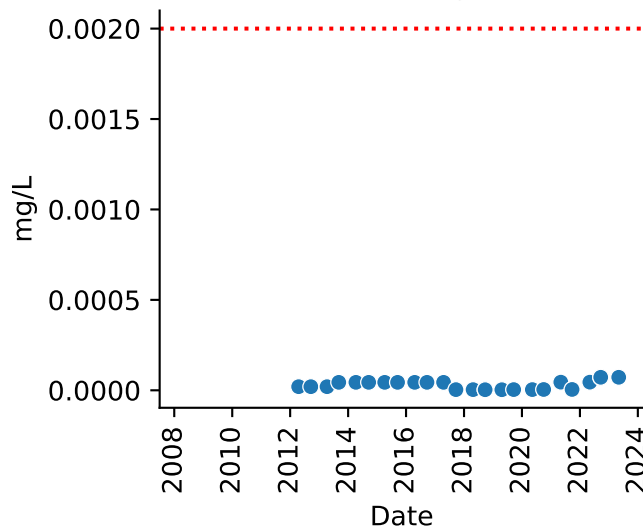
## COC = Cd



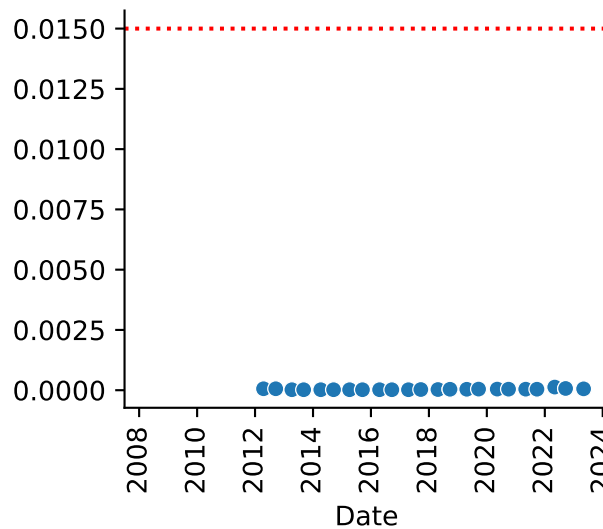
## COC = Cu



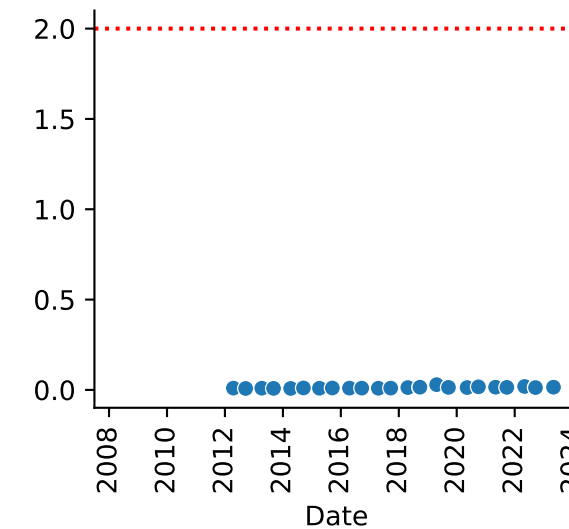
## COC = Hg



## COC = Pb



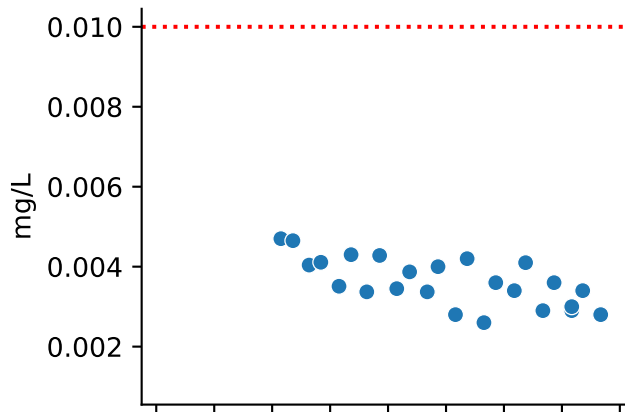
## COC = Zn



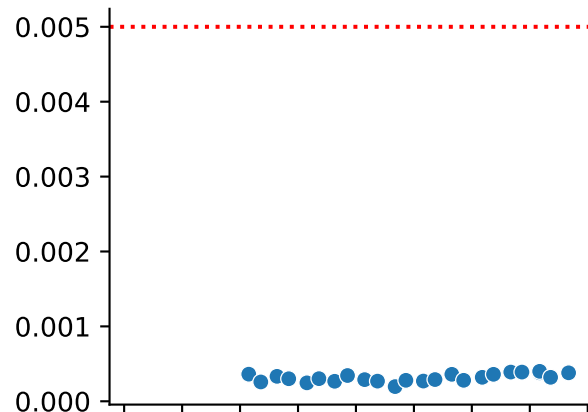
Exceeds GW Std  
● False

# Well = BPS11-12A

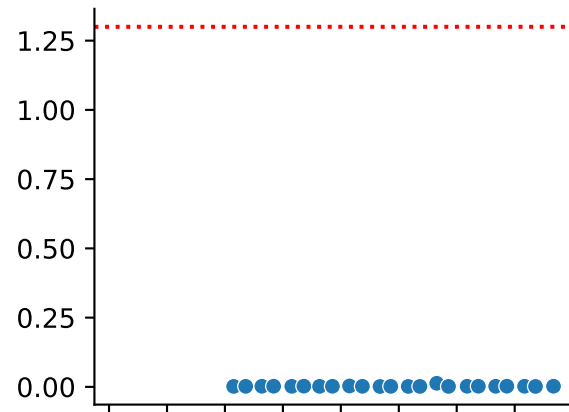
### COC = As



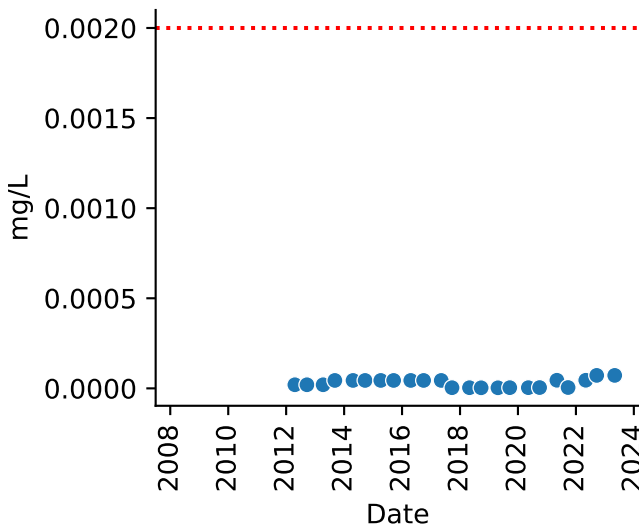
### COC = Cd



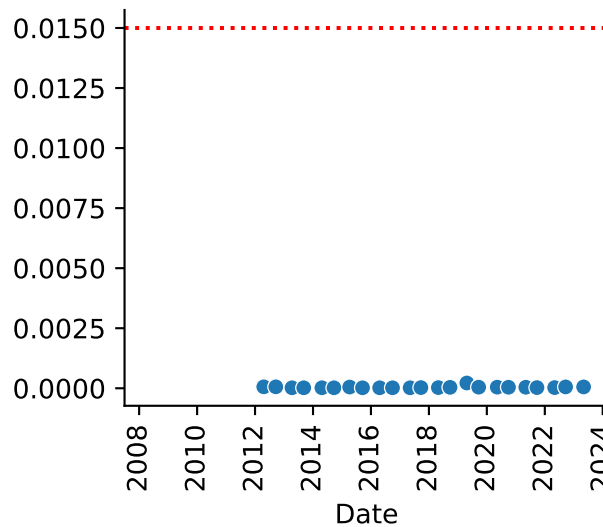
### COC = Cu



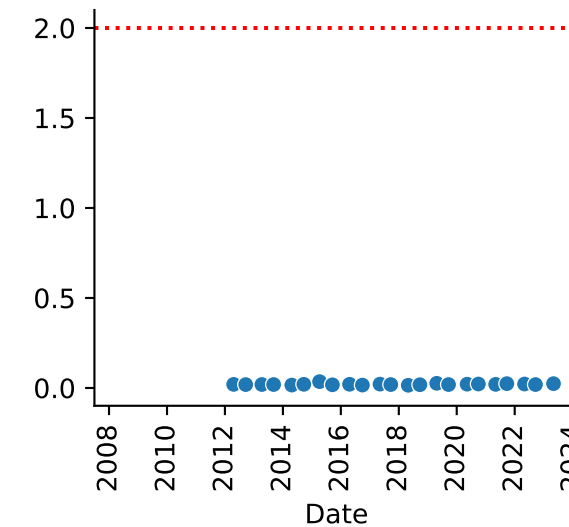
### COC = Hg



### COC = Pb



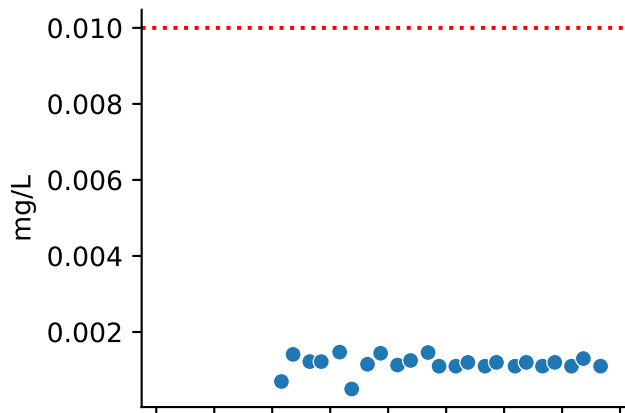
### COC = Zn



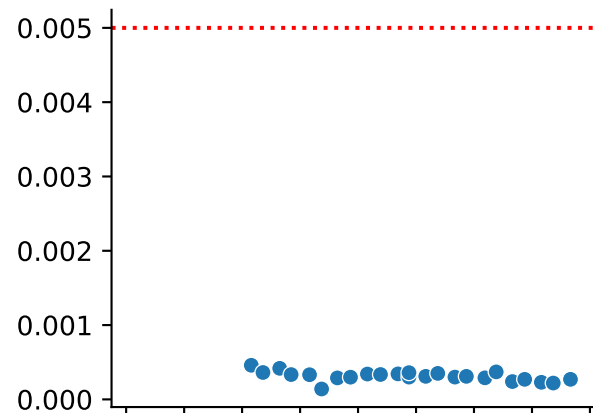
Exceeds GW Std  
● False

# Well = BPS11-14A

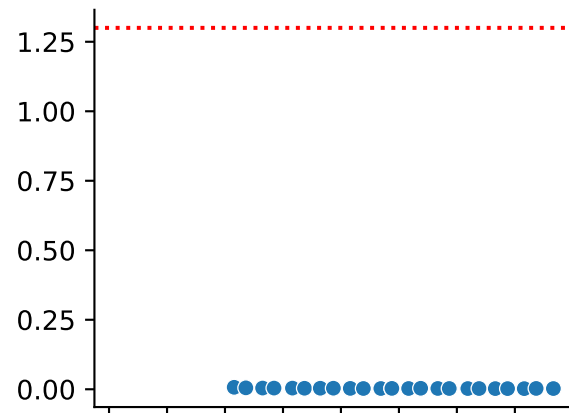
### COC = As



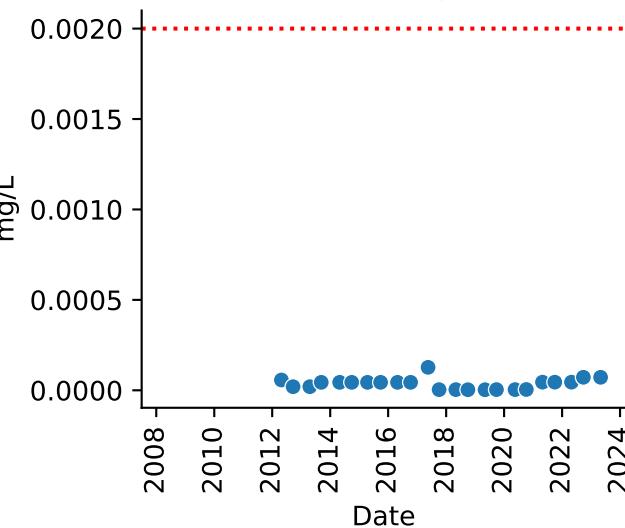
### COC = Cd



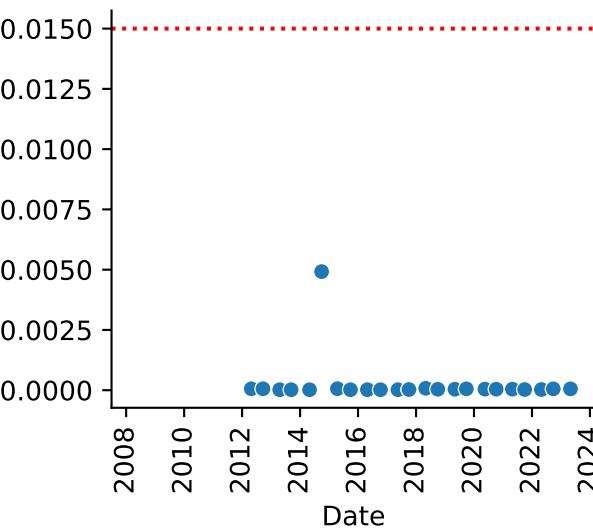
### COC = Cu



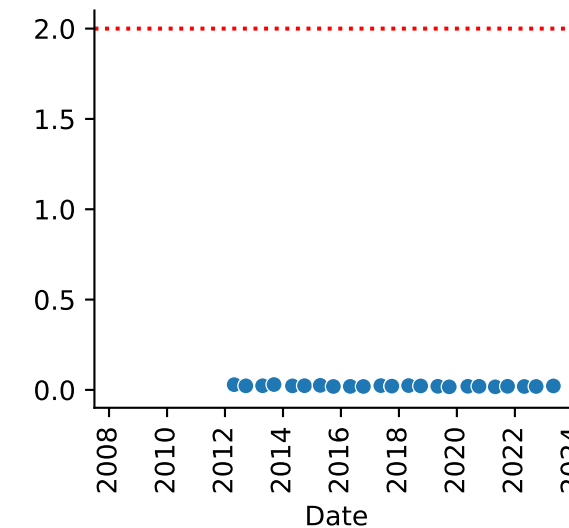
### COC = Hg



### COC = Pb



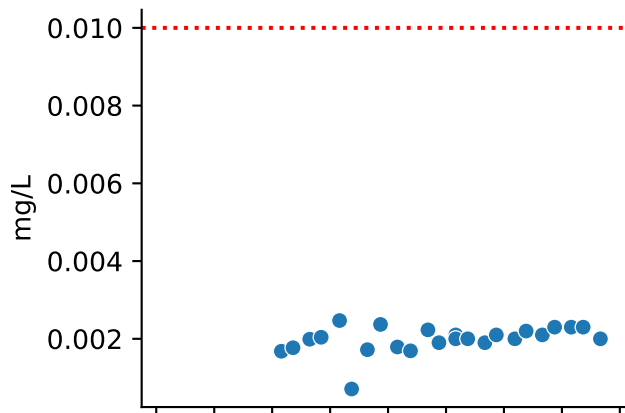
### COC = Zn



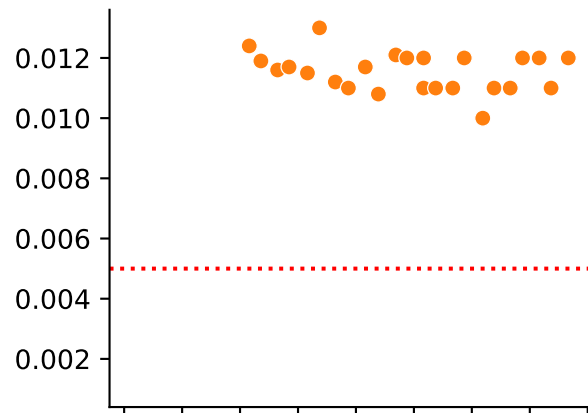
Exceeds GW Std  
● False

Well = BPS11-14B

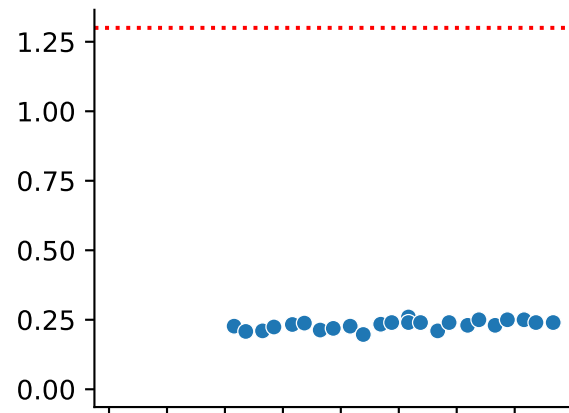
COC = As



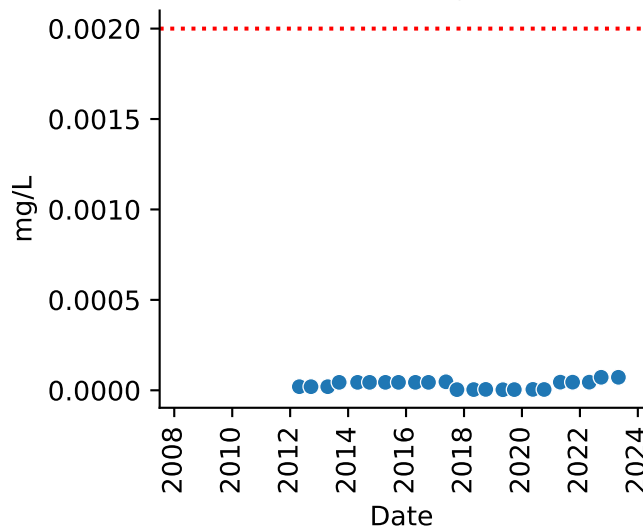
COC = Cd



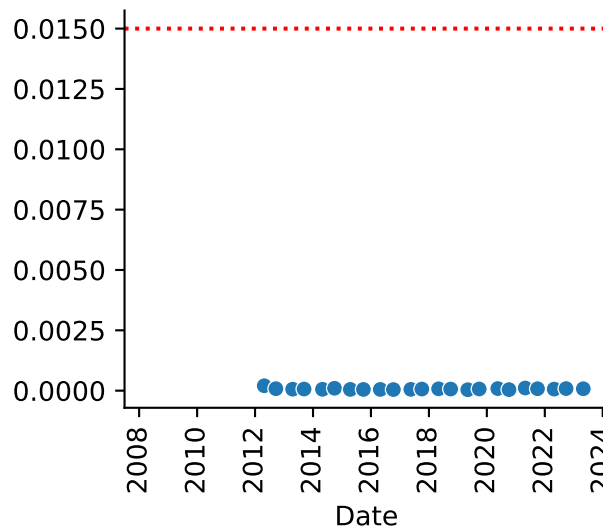
COC = Cu



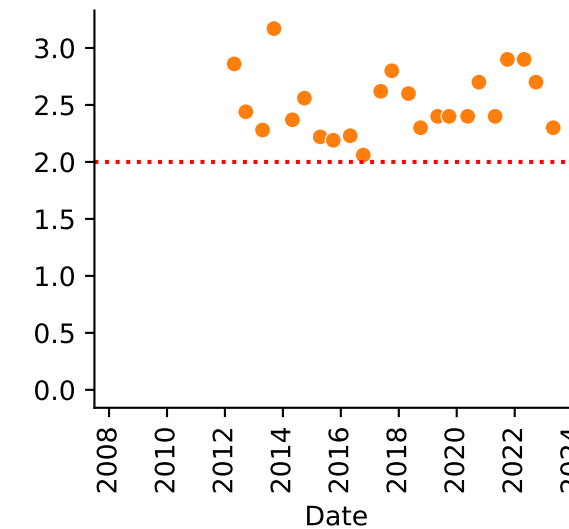
COC = Hg



COC = Pb



COC = Zn



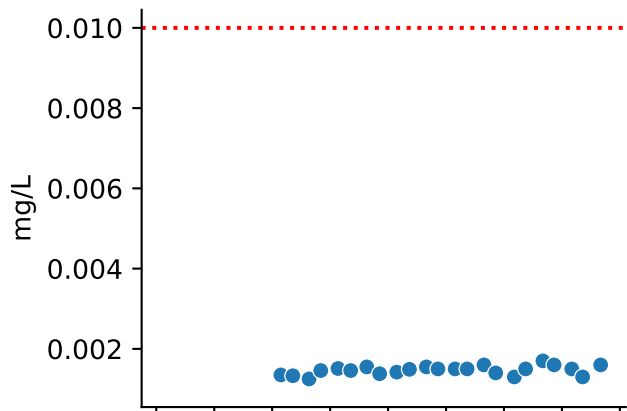
Exceeds GW Std

● False

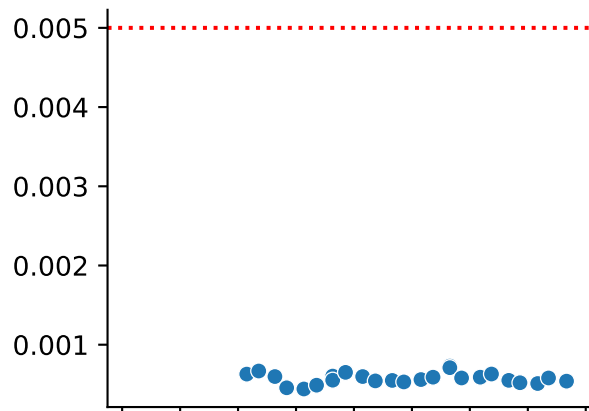
● True

# Well = BPS11-19A2

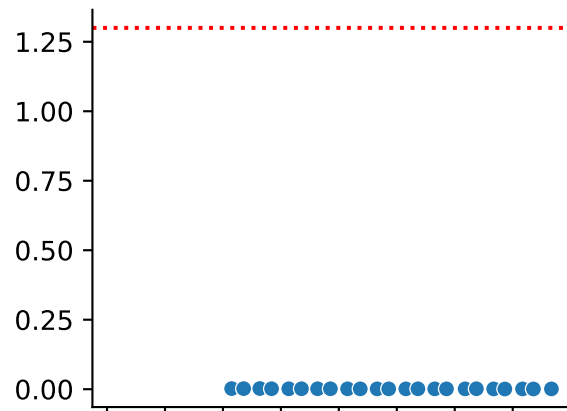
### COC = As



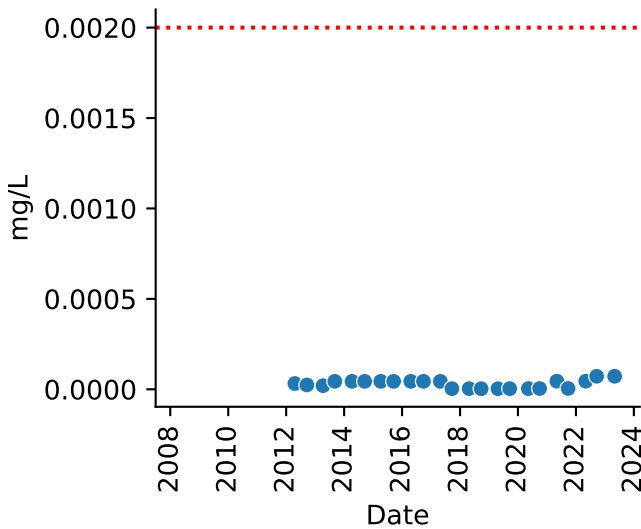
### COC = Cd



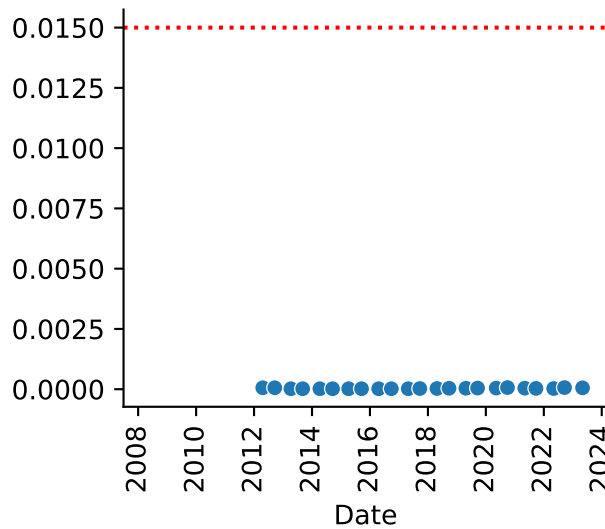
### COC = Cu



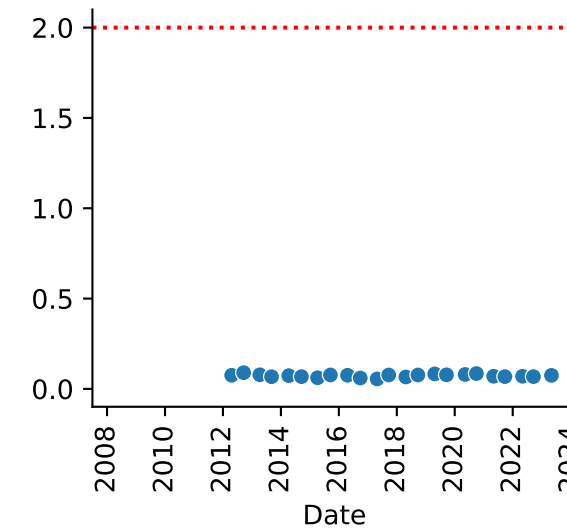
### COC = Hg



### COC = Pb



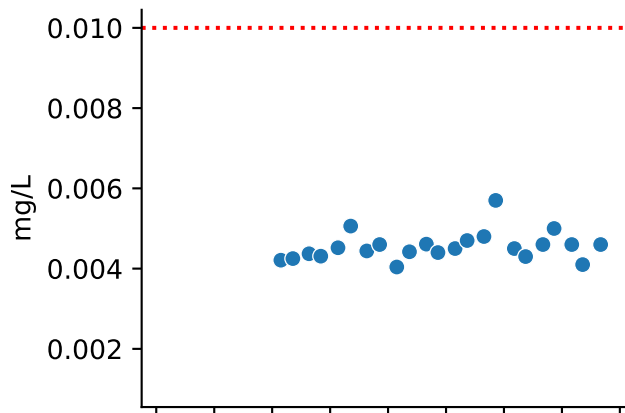
### COC = Zn



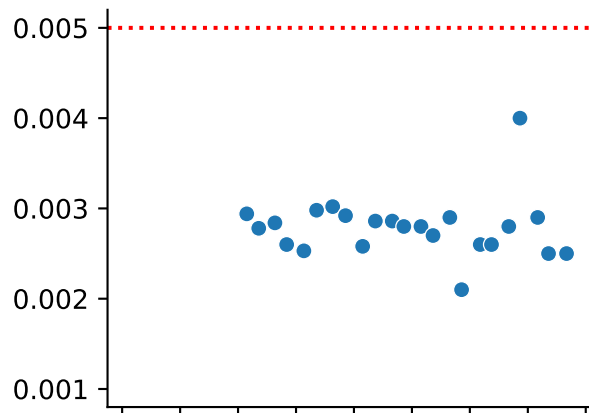
Exceeds GW Std  
● False

# Well = BPS11-19B

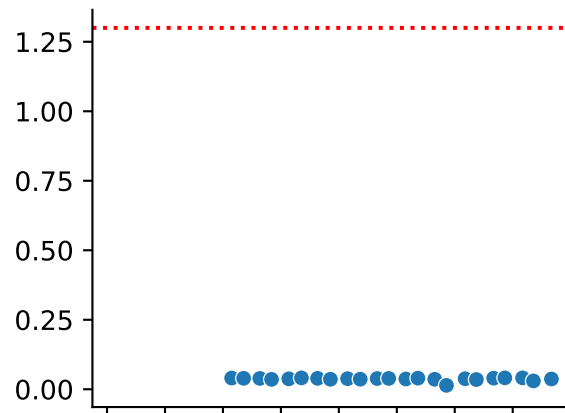
### COC = As



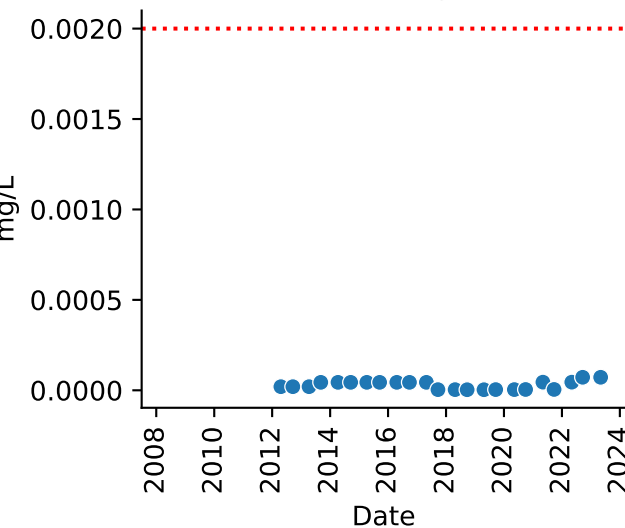
### COC = Cd



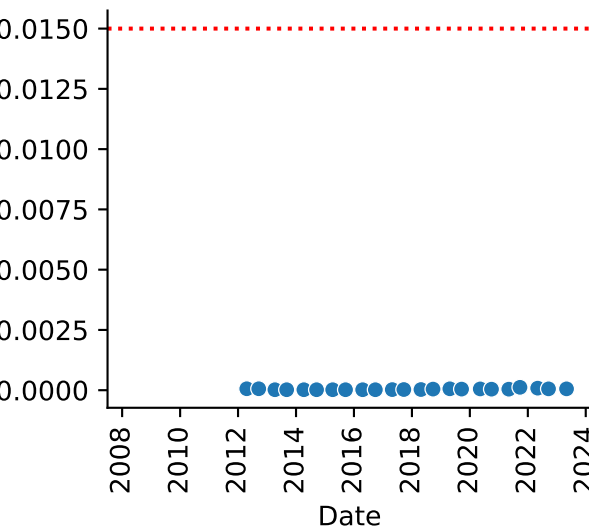
### COC = Cu



### COC = Hg



### COC = Pb



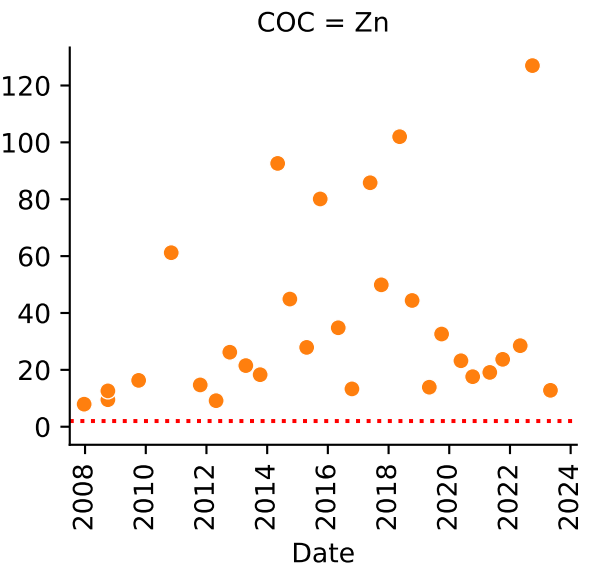
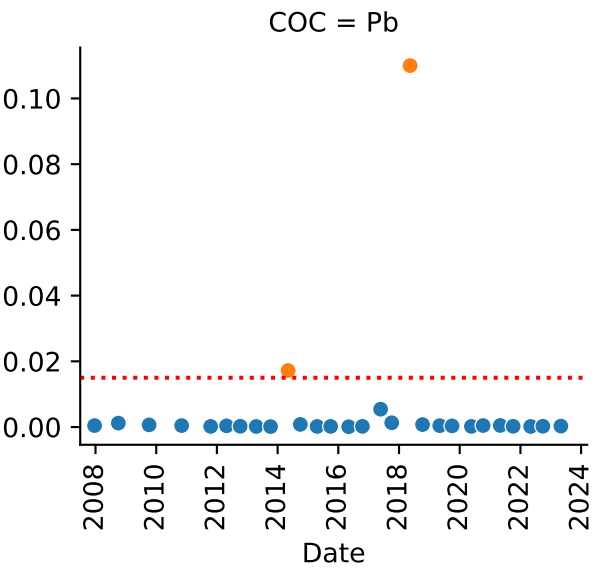
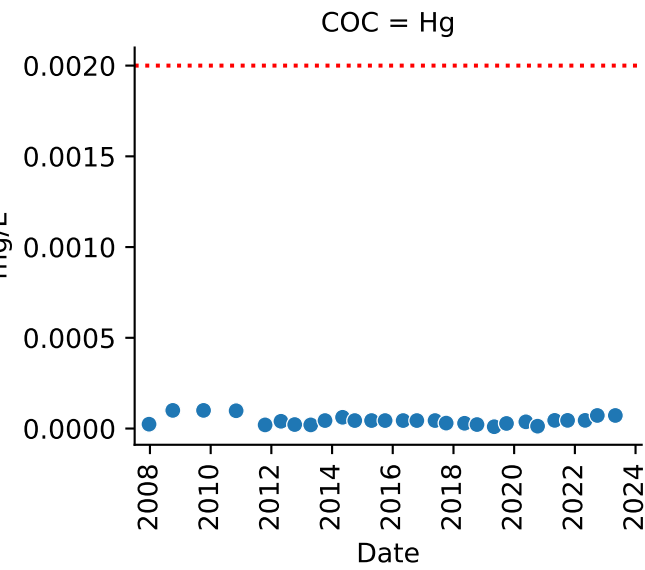
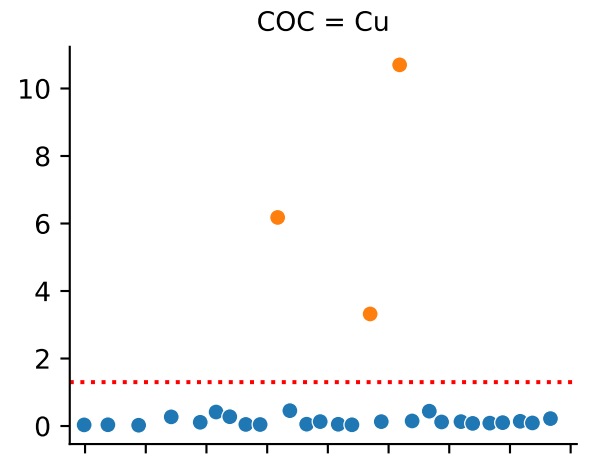
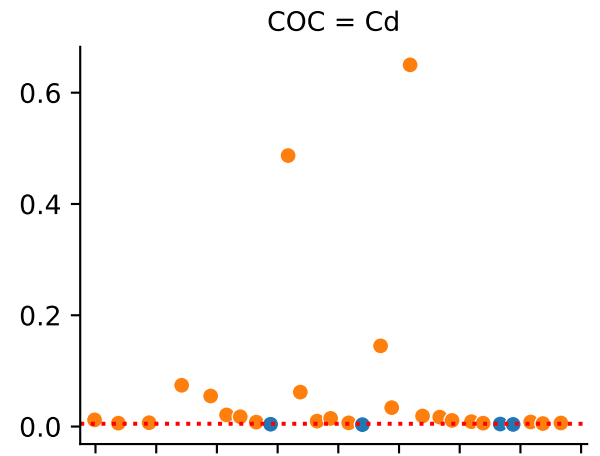
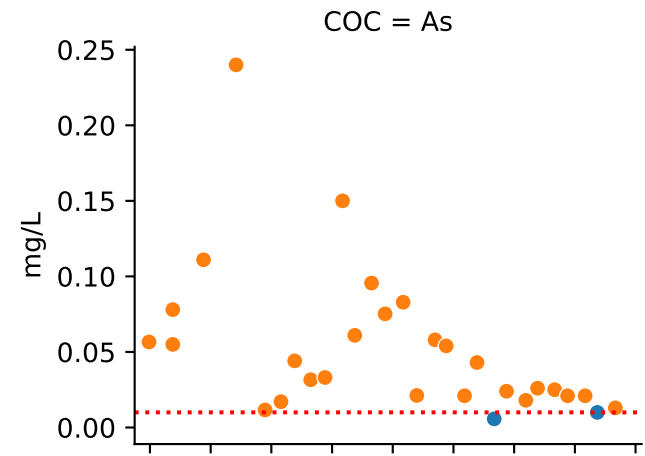
### COC = Zn



Exceeds GW Std  
● False



Well = MF-10



Exceeds GW Std  
● False  
● True