

Montana Tech Library

## Digital Commons @ Montana Tech

---

Silver Bow Creek/Butte Area Superfund Site

Montana Superfund

---

Winter 1-12-2024

### Remedial Action Work Plan Silver Bow Montessori

Environmental Resource Management (ERM)

Follow this and additional works at: [https://digitalcommons.mtech.edu/superfund\\_silverbowbutte](https://digitalcommons.mtech.edu/superfund_silverbowbutte)



Part of the [Environmental Health and Protection Commons](#), [Environmental Indicators and Impact Assessment Commons](#), and the [Environmental Monitoring Commons](#)

---

# Atlantic Richfield Company

317 Anaconda Road  
Butte MT 59701

## Mike McAnulty

Liability Manager

Direct (406) 782-9964

Fax (406) 782-9980

January 13, 2024

Nikia Greene  
Remedial Project Manager  
US EPA – Montana Office  
Baucus Federal Building  
10 West 15th Street, Suite 3200  
Helena, Montana 59626

Erin Agee  
Senior Assistant Regional Counsel  
US EPA Region 8 Office of Regional Counsel  
CERCLA Enforcement Section  
1595 Wynkoop Street  
Denver, CO 80202  
Mail Code: 8ORC-C

Daryl Reed  
DEQ Project Officer  
P.O. Box 200901  
Helena, Montana 59620-0901

Jonathan Morgan, Esq.  
DEQ, Legal Counsel  
P.O. Box 200901  
Helena, Montana 59620-0901

### **RE: Residential Metals Abatement Program – Interior School Dust - Remedial Action Work Plan – Silver Bow Montessori**

Agency Representatives:

I am writing to you on behalf of Atlantic Richfield Company to submit the approved final 2024 Residential Metals Abatement Program *Remedial Action Work Plan – Silver Bow Montessori*. Revisions were made in response to comments received 3 January 2024.

The plan may be downloaded at the following link:

[https://theermgroupnam-my.sharepoint.com/:f/g/personal/thomas\\_beckman\\_erm\\_com/ErpAQXNC2g5FvdGSQFwFGmlBHma9si3rpaNw3RHVlUiv4g?e=4Lwfbe](https://theermgroupnam-my.sharepoint.com/:f/g/personal/thomas_beckman_erm_com/ErpAQXNC2g5FvdGSQFwFGmlBHma9si3rpaNw3RHVlUiv4g?e=4Lwfbe)

If you have any questions or comments, please call me at (907) 355-3914.

Sincerely,



Mike McAnulty  
Liability Manager  
Remediation Management Services Company  
An Affiliate of **Atlantic Richfield Company**



**UNITED STATES ENVIRONMENTAL PROTECTION AGENCY  
REGION 8, MONTANA OFFICE**

FEDERAL BUILDING, 10 West 15<sup>TH</sup> Street, Suite 3200  
Helena, MT 59626-0096  
Phone 866-457-2690  
www.epa.gov/region8

Ref: 8MO

January 3, 2023

Mr. Mike McAnulty  
Liability Manager  
Atlantic Richfield Company  
317 Anaconda Road  
Butte, Montana 59701

**Re: Approval letter for the Butte Priority Soils Operable Unit (BPSOU) Residential Metals Abatement Program (RMAP) Silver Bow Montessori Soil Remedial Action Work Plan (dated November 7, 2023)**

Dear Mike:

The U. S. Environmental Protection Agency (EPA), in consultation with the Montana Department of Environmental Quality (DEQ), is approving the *Residential Metals Abatement Program (RMAP) Silver Bow Montessori Remedial Action Work Plan (RAWP)* (dated November 7, 2023). Please address these comments and distribute as final.

**Comments**

1. Section 4.1.1 Dust Remediation: Please provide examples or clarify what materials would qualify as porous.
2. Section 4.1.1 Dust Remediation: Please identify the specific disposal site for the materials.

If you have any questions or concerns, please call me at (406) 457-5019.

Sincerely,

**NIKIA  
GREENE**

Digitally signed by  
NIKIA GREENE  
Date: 2024.01.03  
13:31:58 -07'00'

Nikia Greene  
Remedial Project Manager

Butte File  
Chris Greco / Atlantic Richfield  
Josh Bryson / Atlantic Richfield  
Mike Mc Anulty / Atlantic Richfield  
Loren Burmeister / Atlantic Richfield  
Dave Griffis / Atlantic Richfield  
Jean Martin / Atlantic Richfield  
Irene Montero / Atlantic Richfield  
David A. Gratson / Environmental Standards  
Mave Gasaway / DGS  
Adam Cohen / DGS  
Brienne McClafferty / Holland & Hart  
Daryl Reed / DEQ  
Kevin Stone / DEQ  
Logan Dudding / DEQ  
Amy Steinmetz / DEQ  
Dave Bowers / DEQ  
Katie Garcin-Forba / DEQ  
Doug Martin / NRDP  
Jim Ford / NRDP  
Pat Cunneen / NRDP  
Katherine Hausrath / NRDP  
Ted Duaine / MBMG  
Gary Icopini / MBMG  
Becky Summerville / MR  
John DeJong / UP  
Robert Bylsma / UP  
John Gilmour / Kelley Drye  
Leo Berry / BNSF  
Robert Lowry / BNSF  
Brooke Kuhl / BNSF  
Lauren Knickrehm / BNSF  
Doug Brannan / Kennedy Jenks  
Matthew Mavrinc / RARUS  
Harrison Roughton / RARUS  
Brad Gordon / RARUS  
Mark Neary / BSB  
Eric Hassler / BSB  
Brandon Warner / BSB  
Abigail Peltomaa / BSB  
Eileen Joyce / BSB  
Sean Peterson/BSB  
Josh Vincent / WET  
Scott Bradshaw / W&C  
Emily Evans / W&C  
Pat Sampson / Pioneer  
Andy Dare / Pioneer

Karen Helfrich / Pioneer  
Randa Colling / Pioneer  
Scott Sampson / Pioneer  
Ian Magruder / CTEC  
CTEC of Butte  
Scott Juskiewicz / Montana Tech  
David Shanight / CDM Smith  
Curt Coover / CDM Smith  
Chapin Storrar / CDM Smith  
Erin Agee / EPA  
Will Lindsey / EPA  
Jamie Miller / EPA  
Carolina Balliew / EPA  
Chris Wardell / EPA  
Dana Barnicoat / EPA  
Charles Van-Otten / EPA  
Charlie Partridge / EPA  
Scott Juskiewicz / Montana Tech Library



**UNITED STATES ENVIRONMENTAL PROTECTION AGENCY**  
**REGION 8, MONTANA OFFICE**  
FEDERAL BUILDING, 10 West 15<sup>TH</sup> Street, Suite 3200  
Helena, MT 59626-0096  
Phone 866-457-2690  
www.epa.gov/region8

Ref: 8MO

January 3, 2023

Mr. Mike McAnulty  
Liability Manager  
Atlantic Richfield Company  
317 Anaconda Road  
Butte, Montana 59701

**Re: Approval letter for the Butte Priority Soils Operable Unit (BPSOU) Residential Metals Abatement Program (RMAP) Silver Bow Montessori Soil Remedial Action Work Plan (dated November 7, 2023)**

Dear Mike:

The U. S. Environmental Protection Agency (EPA), in consultation with the Montana Department of Environmental Quality (DEQ), is approving the *Residential Metals Abatement Program (RMAP) Silver Bow Montessori Remedial Action Work Plan (RAWP)* (dated November 7, 2023). Please address these comments and distribute as final.

**Comments**

1. Section 4.1.1 Dust Remediation: Please provide examples or clarify what materials would qualify as porous.  
[ERM response: Section 4.1.1 has been revised with examples of porous materials.](#)
2. Section 4.1.1 Dust Remediation: Please identify the specific disposal site for the materials.  
[ERM response: Section 4.1.1 has been revised to include disposal at the Butte-Silver Bow Landfill.](#)

If you have any questions or concerns, please call me at (406) 457-5019.

Sincerely,

**NIKIA GREENE**

Nikia Greene

Digitally signed by NIKIA GREENE Date: 2024.01.03  
13:31:58 -07'00'



Remedial Project Manager

Butte File  
Chris Greco / Atlantic Richfield  
Josh Bryson / Atlantic Richfield  
Mike Mc Anulty / Atlantic Richfield  
Loren Burmeister / Atlantic Richfield  
Dave Griffis / Atlantic Richfield  
Jean Martin / Atlantic Richfield  
Irene Montero / Atlantic Richfield  
David A. Gratson / Environmental Standards  
Mave Gasaway / DGS  
Adam Cohen / DGS  
Brianna McClafferty / Holland & Hart  
Daryl Reed / DEQ  
Kevin Stone / DEQ  
Logan Dudding / DEQ  
Amy Steinmetz / DEQ  
Dave Bowers / DEQ  
Katie Garcin-Forba / DEQ  
Doug Martin / NRDP  
Jim Ford / NRDP  
Pat Cunneen / NRDP  
Katherine Hausrath / NRDP  
Ted Duaine / MBMG  
Gary Icopini / MBMG  
Becky Summerville / MR  
John DeJong / UP  
Robert Bylsma / UP  
John Gilmour / Kelley Drye  
Leo Berry / BNSF  
Robert Lowry / BNSF  
Brooke Kuhl / BNSF  
Lauren Knickrehm / BNSF  
Doug Brannan / Kennedy Jenks  
Matthew Mavrinc / RARUS  
Harrison Roughton / RARUS  
Brad Gordon / RARUS  
Mark Neary / BSB  
Eric Hassler / BSB  
Brandon Warner / BSB  
Abigail Peltomaa / BSB  
Eileen Joyce / BSB  
Sean Peterson / BSB  
Josh Vincent / WET

Scott Bradshaw / W&C  
Emily Evans / W&C  
Pat Sampson / Pioneer  
Andy Dare / Pioneer  
Karen Helfrich / Pioneer  
Randa Colling / Pioneer  
Scott Sampson / Pioneer  
Ian Magruder/ CTEC  
CTEC of Butte  
Scott Juskiewicz / Montana Tech  
David Shanight / CDM Smith  
Curt Coover / CDM Smith  
Chapin Storrar / CDM Smith  
Erin Agee / EPA  
Will Lindsey / EPA  
Jamie Miller / EPA  
Carolina Balliew / EPA  
Chris Wardell / EPA  
Dana Barnicoat / EPA  
Charles Van-Otten / EPA  
Charlie Partridge / EPA  
Scott Juskiewicz / Montana Tech Library





Atlantic Richfield Company

# Remedial Action Work Plan

Silver Bow Montessori

12 January 2024

Project No.: 0643586

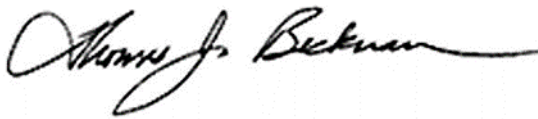
---

## Signature Page

12 January 2024

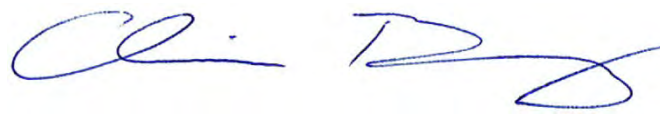
# Remedial Action Work Plan

Silver Bow Montessori



---

Thomas J. Beckman  
*Partner*



---

Christopher Berg  
*Project Manager*

Environmental Resources Management, Inc.  
900 E. Benson Blvd.  
Suite 480  
Anchorage, AK 99508

T: +1 925 946 0455  
F: +1 907 258 4033

© Copyright 2024 by The ERM International Group Limited and/or its affiliates ('ERM'). All Rights Reserved. No part of this work may be reproduced or transmitted in any form or by any means, without prior written permission of ERM.

## CONTENTS

1.	INTRODUCTION .....	1
2.	SCHOOL INDOOR DUST REMEDIATION SCOPE .....	1
3.	SCHOOL DUST REMEDIATION SCHEDULE .....	1
4.	REMEDIAL ACTION WORK PLAN .....	1
4.1	Silver Bow Montessori Remedial Action .....	1
4.1.1	Dust Remediation .....	2
4.2	Post-Remediation Monitoring.....	2
5.	REFERENCES .....	3

## FIGURES

APPENDIX A PHOTOGRAPHIC LOG

APPENDIX B EDUCATIONAL MATERIALS

## Tables

Table 1	Silver Bow Montessori Property Information.....	1
---------	---	---

## Figures

Figure 1: Silver Bow Montessori Site Location

Figure 2: Silver Bow Montessori RA Work Area

## Acronyms and Abbreviations

ERM	Environmental Resources Management, Inc.
HEPA	High-Efficiency Particulate Air
ICIAP	Institutional Control Implementation and Assurance Plan
QAPP	Quality Assurance Project Plan
RA	Remedial Action
RAWP	Remedial Action Work Plan
RMAP	Residential Metals Abatement Program
USEPA	United States Environmental Protection Agency

## 1. INTRODUCTION

This Remedial Action Work Plan (RAWP) was developed to outline a portion of the remedial action (RA) work resulting from the 2022 Residential Metals Abatement Program (RMAP) indoor school dust sampling events completed from May through July 2022. The sampling events were conducted in accordance with the Final Residential Metals Abatement Program (RMAP) Quality Assurance Project Plan (QAPP) (Non-Residential Parcels – Indoor Dust) (Atlantic Richfield Company, 2022 and the RMAP Field Sampling Plan – Indoor Dust – Group 1), 2022.

## 2. SCHOOL INDOOR DUST REMEDIATION SCOPE

The scope of work covered by this RAWP includes Silver Bow Montessori, located at 1800 Sunset Road Butte, Montana (Table 1, Figure 1).

**Table 1 Silver Bow Montessori Property Information**

Count	Res-ID	Geocode	Name	Physical Address	Owner	Construction Date
5	S-0015	01109506106060000	Silver Bow Montessori	1800 Sunset Road, Butte, MT 59701	Montessori Campus LLC	1947

## 3. SCHOOL DUST REMEDIATION SCHEDULE

This scope of work is anticipated to be completed between December 2023 and February 2024. Coordination work is on-going with relevant stakeholders. Anticipated deadlines for remedial action are as follows and are contingent on the timing of United States Environmental Protection Agency (USEPA) approvals:

- Planning and access coordination – December 2023
- Remedy implementation – January 2024
- Reporting – February 2024

## 4. REMEDIAL ACTION WORK PLAN

### 4.1 Silver Bow Montessori Remedial Action

Remediation at Silver Bow Montessori will target the basement, outlined in Figure 2. Lead was detected in exceedance of the Butte Priority Soils Site-Specific Residential Action Level for surface dust in a floor surface dust sample (S-0015-D-F-01-20220617) from the basement furnace room, prompting the need for remedial action.

Access to the basement is through the main east building, down a stairwell adjacent to the southeast classroom. Access is currently restricted to Silver Bow Montessori staff. The basement is approximately 1,100 square foot area, has two storage closets and a furnace/boiler room. The basement is primarily used for storage of school supplies, books, shelves, and plastic storage containers. The furnace/boiler room has an exposed earthen area adjacent to the furnace unit. In July 2023, a three-point composite soil

sample was taken from the exposed earthen area, and no constituents were detected above the Butte Priority Soils Site-Specific Residential Action Levels. See Appendix A for photographs of the basement.

After remedial action work, school officials will be provided a post construction understanding of the risks of bringing personal materials to basement storage and the potential of these materials to transfer metal impacted dust will be distributed to the Silver Bow Montessori staff. A Construction Completion Report will be submitted to USEPA once all remedial actions have been completed.

#### **4.1.1 Dust Remediation**

Remediation of dust is necessary due to a lead concentration detected in exceedance of the Butte Priority Soils Site-Specific Residential Action Levels for indoor dust in a floor surface sample location in the basement. This remediation will prevent the migration of particulates and dust from the basement to the occupied areas of the school.

Porous materials (items composed of paper, cardboard, untreated wood, fabrics, sponges) stored in the basement will be collected and disposed of accordingly. Large porous materials will be wrapped in heavy-duty plastic (6-millimeter plastic or similar sheeting that will resist puncture) and placed in a designated waste container. Smaller porous debris and materials will be placed directly into industrial garbage bags and placed in the designated waste container. After all materials are removed, accumulated dust will be wiped from horizontal surfaces and pipe chases, working from higher to lower surfaces. Following the initial wipe down, a high-efficiency particulate air (HEPA) vacuum will be used to clean all surfaces including ceilings, shelves, doors, and floors, again working from higher to lower surfaces. Once vacuuming is complete, all surfaces will be wiped down once more to ensure no dust is left behind. Wipes and filters from this remedial action work will be placed in sealed waste bags before being transported out of each area for proper disposal.

At the conclusion of cleaning, the remediated areas will be visually inspected to ensure that all visible dust and debris has been removed. If dust is detected, the areas will be cleaned again, following the same protocol as the prior cleaning. The outside of the garbage bags and large materials wrapped in heavy-duty plastic will be decontaminated with detergent cleaning material and disposable towels before being removed from the basement. All materials removed from the basement area (garbage bags, wrapped materials) will be placed in dumpsters outside of the school. The contents of these dumpsters are disposed of at the Butte-Silver Bow Landfill.

Following remedial action activities, educational materials describing the risks of bringing personal materials to basement storage and the potential of these materials to transfer metal impacted dust will be distributed to the Silver Bow Montessori staff. These materials are shown in Appendix B.

## **4.2 Post-Remediation Monitoring**

The basement will be inspected, and floor surface dust samples will be collected and analyzed for lead one year after the area is cleaned. Post-cleaning monitoring and reporting will be conducted by Atlantic Richfield Company in accordance with the QAPP. An Investigation and Data Summary Report will be prepared and submitted to USEPA following completion of the post-remediation monitoring.

## 5. REFERENCES

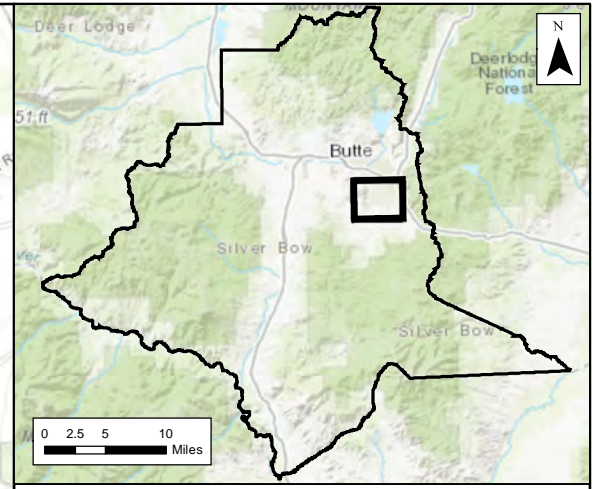
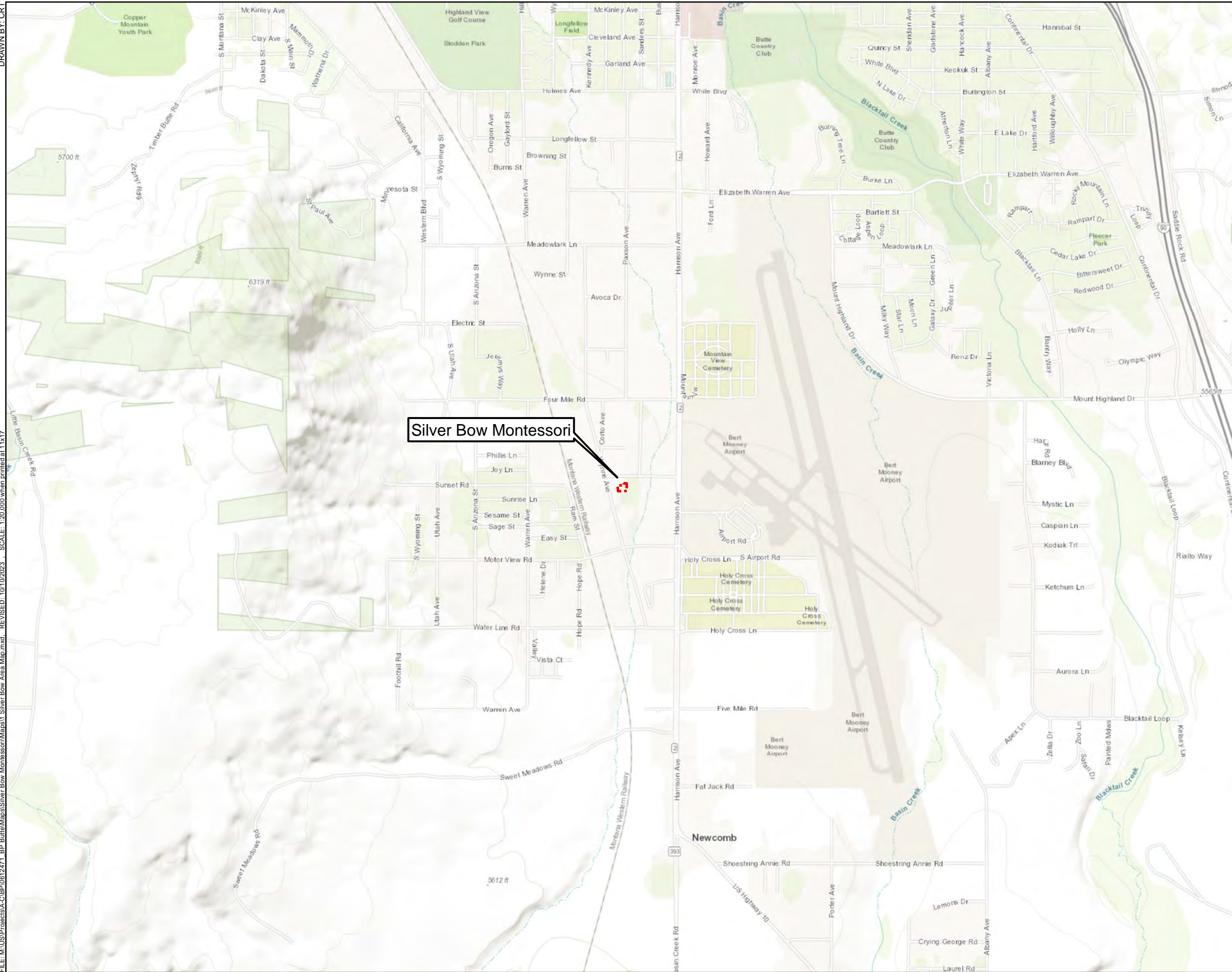
Atlantic Richfield Company, 2019. Silver Bow Creek/Butte Are NPL Site Butte Priority Soils Operable Unit Final Institutional Controls Implementation and Assurance Plan. October 2019.

Atlantic Richfield Company, 2022a. Residential Metals Abatement Program Quality Assurance Project Plan (Non-Residential Parcels – Indoor Dust). October 2022.

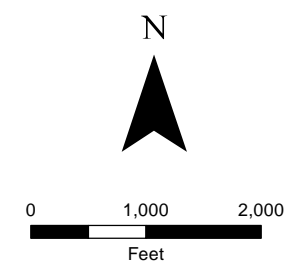
Atlantic Richfield Company, 2022b. Residential Metals Abatement Program Field Sampling Plan - Indoor Dust – Group 1. May 2022.

---

## FIGURES



**Legend**  
 Site Area



**Figure 1**  
**Silver Bow Montessori Location**  
 1800 Sunset Rd  
 Butte, MT 59701

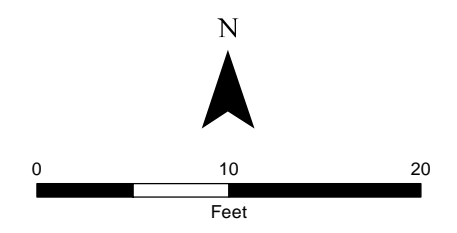




**Legend**

 RA Work Area

Notes:  
-Room IDs reflect verbiage used on site maps provided by Silver Bow Montessori.



**Figure 2**  
**Silver Bow Montessori**  
**Basement RA Work Area**  
1800 Sunset Rd  
Butte, MT 59701

---

**APPENDIX B      EDUCATIONAL MATERIALS**



**Photograph:** Northwest basement closet, facing west.  
0033



**Photograph:** Furnace/boiler room entrance, facing south.  
0411



**Photograph:**  
0412

Southeast corner of the basement, facing southeast.



**Photograph:**  
0413

South area of basement, facing east.





**Photograph:**  
0414

Northeast corner of basement, facing northeast.



**Photograph:**  
0415

North storage closet, facing north.



**Butte RMAP**  
**Silver Bow Montessori**  
ERM Project Number 0643586

---

**APPENDIX A      PHOTOGRAPHIC LOG**

# Be Contaminant Smart



Help protect yourself, your family, and your community from mining-related contamination in Butte, Montana

# Be Safe and Avoid Mining Impacts

Land in and around Butte has been impacted by over a century of mining, leaving potentially harmful contamination. Cleanup measures are in place to ensure that people are protected from mining contamination and to work together for comprehensive public health and wellness. **You can help!** There are steps you can take to protect yourself and your family.

## Lead

Lead is the primary contaminant of concern in Butte. It is a naturally occurring element in the earth's crust and is found in higher soil concentrations in Butte because of historic mining activity. There are also many possible sources of lead in the home.

### Sources of Lead in Butte

#### Indoors



Toys



Interior and attic dust



Lead-based paint



Hobby materials



Folk medicine



Some cosmetics

#### Outdoors

Contaminated soil in yards, gardens, and throughout the hillside of Butte



## Arsenic and Other Metals

Arsenic and, to a lesser extent, copper, aluminum, cadmium, iron, mercury, and zinc are also contaminants found in Butte. Like lead, they are naturally occurring elements in the earth's crust and found in higher concentrations in Butte because of historic mining activity.



# Exposure Pathways

Exposure pathway is the term used to describe how people come in contact with a contaminant. In Butte, the exposure pathways for lead, arsenic, and the other contaminants of concern are similar. They include breathing, touching, and eating. For lead, exposures can also occur to the fetus during pregnancy causing reduced growth and premature birth.

## Exposure Pathways for Lead, Arsenic, and Other Contaminants

### Breathing



Exterior dust



Indoor dust

### Touching



Playing in  
contaminated soil



Handling  
contaminated items

### Eating



Contaminated dust



Garden produce



Pregnancy

Sampling and testing are the only way to  
know if your soil is contaminated.

# Understanding Health Impacts

Lead is a poisonous metal that can cause learning, hearing, and behavioral problems. While it has beneficial uses, it can be toxic to humans and animals and can cause adverse health effects.

Lead can accumulate in our bodies over time. It is stored in bones along with calcium. **Children are more at risk from lead!** Exposure to lead can harm a child's brain, kidneys, and other organs. Children 6 years and younger are most susceptible since their nervous systems are still developing.

Even low levels of lead in the blood of children can result in serious problems. Children with elevated

## Lead Impacts in Children

The infographic features a yellow background with silhouettes of a child's head and torso. It lists six health impacts, each with a corresponding icon: a gear for behavior and learning problems, a line graph for slowed growth, a water drop with a red 'a' for anemia, a lightbulb for lower IQ scores, an ear for hearing problems, and a glowing lightbulb for hyperactivity.

- Behavior and learning problems
- Slowed growth
- Anemia
- Lower IQ scores
- Hearing problems
- Hyperactivity

## Arsenic Impacts

The infographic shows a pink silhouette of a human body with internal organs. Yellow boxes with lines point to specific areas, indicating increased risk of skin cancer (on the neck), lung cancer (in the lungs), liver cancer (in the liver), and bladder cancer (in the bladder). To the right, a smaller silhouette of a child's head is labeled with 'Lower IQ scores'.

Increased risk of:

- Skin cancer
- Lung cancer
- Liver cancer
- Bladder cancer
- Lower IQ scores

blood-lead levels usually do not look or act sick. The only way to know if your child has lead poisoning is by getting a blood test.

Like lead, exposure to arsenic can be bad for your health. Arsenic is a known carcinogen and can impact the skin, bladder, liver and lungs. Some studies have also shown that arsenic exposure in children can result in lower IQ scores.

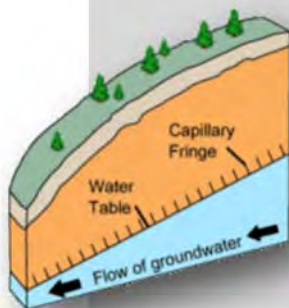
# Working Together

People are working together in Butte to ensure residents are protected from lead and arsenic and other potentially harmful contamination. Community groups, the City and County of Butte-Silver Bow, the Montana Department of Environmental Quality, and the U.S. Environmental Protection Agency Superfund Program are cooperating to address the contamination and promote education and blood-lead testing to protect human health and the environment.

## The Plan For Protection: Water

### Drinking Water

Water from Butte faucets is not contaminated and comes from sources outside of Butte, including the upgraded Basin Creek Reservoir. It is safe to drink and routinely tested.



### Groundwater

In certain areas of Butte, groundwater is contaminated. Use of this groundwater is restricted to prevent exposure and it is not allowed to be used for drinking. The contaminated groundwater is captured and treated before it is discharged into streams.

### Surface and Storm Water

Water that flows through Butte in creeks after rain and snow melt can transport surface contamination that is potentially harmful to aquatic life. The plan is to manage this water to reduce spreading contamination around Butte.



# The Plan For Protection: Soil

## Removal

- Millions of cubic yards of mine tailings and contaminated soil in Butte have been removed to prevent human exposure.
- Removals include contaminated yard soils and interior sources of lead such as lead paint and attic dust through Butte-Silver Bow's Residential Metals Abatement Program (RMAP).
- Removal actions are ongoing in Butte.

### The RMAP Will:

- Sample and analyze your home and yard.
- Clean up contaminated attic dust, indoor dust, yards and lead paint if needed.
- Provide these services free and with minimal disruption to the home occupant.



**Learn more about the program by calling 406-497-5040 or visiting the RMAP website.**

## Capping

- Potentially hazardous contaminated soil that is not removed is covered with a protective layer of clean soil.
- These "caps" are maintained by Butte-Silver Bow County and are monitored using the Butte Reclamation and Evaluation System to ensure they are protective.
- The Butte Reclamation and Evaluation System is:
  - \* Implemented in cooperation with the Clark Fork Watershed Education Program.
  - \* Responsible for evaluating all reclaimed areas (25 percent of all sites evaluated annually).
  - \* Responsible for correcting protective cap problems under EPA approved work plans.

# The Plan For Protection: Programs

## Blood Lead Screening

- Available to all county residents at no charge through Butte-Silver Bow's Women, Infants, and Children Program (406-497-5060).



## Public Education

- Projects are ongoing in Butte through community outreach by public, private, and non-profit groups.



## Butte-Silver Bow Women, Infants, and Children Program

- Offers and encourages free blood-lead testing at the County Health Department.
- Reports all elevated results to the RMAP for further evaluation.
- Provides a range of resources to improve health and nutrition to women, infants, and children up to 5 years of age.



Part of the

# Be Contaminant Smart: Family

Contamination from historic mining will remain in Butte even after cleanup is complete. In addition to the cleanup measures, there are things you can do to for your family to be contaminant smart.

## Choose a Healthy Diet

- Eat iron-rich foods. Normal iron levels protect the body from lead. Good sources of iron are lean meats, fortified cereals, and dried fruits.
- Eat calcium-rich foods. Calcium reduces lead absorption. Good sources of calcium are green leafy vegetables, milk, and cheese.
- Eat regularly. Children with empty stomachs absorb more lead. Provide children 4 to 6 small meals during the day.

## Properly Prepare Garden Produce

- Keep preparation surfaces clean.
- Wash produce to remove soil.
- Throw away the outer leaves of leafy vegetables and peel root crops to remove the skin and any residual soil.

## Test Your Kids for Lead

- Enroll in the blood-lead testing program with Butte-Silver Bow's [Women, Infants, and Children Program](#) by calling 406-497-5060.

## Stay Informed

- Read and follow the suggestions in the EPA Guide [Fight Lead Poisoning with a Healthy Diet](#).
- Learn and educate others about lead, arsenic, and other contaminants in Butte.



Web link to *Fight Lead Poisoning with a Healthy Diet*:

[www.epa.gov/lead/fight-lead-poisoning-healthy-diet](http://www.epa.gov/lead/fight-lead-poisoning-healthy-diet)

# Be Contaminant Smart: Home

Safety starts at home and there are important and simple practices you can follow to keep your family healthy.



## Keep Things Clean

- Keep your home clean and dust-free. This will cut down on the amount of contamination present in the environment.
- Wash hands and toys frequently will help prevent spreading germs and cut down on colds.
- Keep painted surfaces in good condition and clean around painted areas where friction can generate dust like doors, windows, and drawers.

## Understand and Identify Potential Sources

- Identify and limit exposure to products that may contain lead. These may include toys, cosmetics, crafts, and other items.
- If buying a home built before 1978, find out if it contains lead-based paint. A seller must disclose any known lead-based hazards.

## Don't Create Unnecessary Exposures

- Practice safe do-it-yourself renovations. Read and follow guidance in the EPA pamphlet [Renovate Right](#).

## Stay Informed

- Read and follow the suggestions in EPA's brochure [Protect Your Family from Lead in Your Home](#).
- Contact Butte-Silver Bow's [Residential Metals Abatement Program](#) to have your home tested for lead and arsenic (406-497-5040).

**Web link to *Renovating Right*:**

[www.epa.gov/lead/lead-safe-certified-guide-renovate-right-2](http://www.epa.gov/lead/lead-safe-certified-guide-renovate-right-2)

**Web link to *Protect Your Family from Lead in Your Home*:**

[www.epa.gov/lead/protect-your-family-lead-your-home](http://www.epa.gov/lead/protect-your-family-lead-your-home)

# Be Contaminant Smart: Outside

Gardening is a fun and healthy hobby and there are contaminant smart tips to help keep gardening safe.

## Don't Let Contamination Into Your Home

- Leave dirty shoes at the door.
- Reduce dirt brought in by pets.
- Wash children's hands, bottles, pacifiers and toys often especially if they contact soil.
- Avoid contact between gardening clothes and furniture.
- Wash garden produce thoroughly to remove soil completely.

## Garden Carefully

- Wear gloves while gardening and when harvesting produce.
- Add organic materials, like compost, manure, leaves, or grass clippings to your garden. Organic compounds bind lead and make it less available to contaminate plants.
- Add mulch to the garden to reduce dust and to prevent soil from splashing onto plants during irrigation or rainstorms.
- Locate your garden as far as possible from busy streets, highways, or old buildings. Traffic can spread dust contaminated with lead and old buildings may shed lead paint.
- Encourage kids to play away from the garden.
- Select plants with shallow roots to ensure that roots do not reach contaminated soil. Increase planting of fruits and vegetables that grow on vines and of fruit trees.
- Grow crops in containers filled with clean soil or build raised beds using safe materials.





# Be Contaminant Smart: Taboos

Finally, there are some things to avoid to be contaminant smart and keep your family safe.

# STOP!

- **DO NOT knowingly consume lead, arsenic or other potentially harmful contamination.**
- **DO NOT let children chew or put paint chips in their mouths.**
- **DO NOT let children eat dirt.**
- **DO NOT try to remove lead based paint yourself. Call the RMAP or use an EPA certified or approved contractor. Read and follow the guidance of EPA's [Renovation, Repair and Painting Program](#).**
- **DO NOT allow children to play in known tailings or contaminated soil.**
- **DO NOT have hobbies that use lead.**



Remember, the Butte-Silver Bow RMAP is your best resource for help with lead paint identification and removal and for dealing with attic dust. Their assistance is provided at no cost to you.

# Contacts for More Information

## Citizens for Labor and Environmental Justice

- [www.facebook.com/Citizens-for-Labor-and-Environmental-Justice-860260360719942/](https://www.facebook.com/Citizens-for-Labor-and-Environmental-Justice-860260360719942/)
- 406-496-4228

## Citizens Technical Environmental Committee

- [www.buttectec.org](http://www.buttectec.org)
- 406-723-6247

## City and County of Butte-Silver Bow

- [www.co.silverbow.mt.us](http://www.co.silverbow.mt.us)
- Health Department, 406-497-5020
- Women, Infants and Children Program, 406-497-5060
- Residential Metals Abatement Program, 406-497-5040

## Montana Department of Environmental Quality

- [www.deq.mt.gov/Land/fedsuperfund](http://www.deq.mt.gov/Land/fedsuperfund)
- 406-444-6444

## U.S. Environmental Protection Agency

- [www.epa.gov/mt](http://www.epa.gov/mt)
- 406-457-5000