

Montana Tech Library

**Digital Commons @ Montana Tech**

---

Silver Bow Creek/Butte Area Superfund Site

Montana Superfund

---

Fall 9-19-2022

## **Butte Priority Soils Operable Unit (BPSOU) Final Street and Snow Management Plan**

Mike McAnulty

Follow this and additional works at: [https://digitalcommons.mtech.edu/superfund\\_silverbowbutte](https://digitalcommons.mtech.edu/superfund_silverbowbutte)



Part of the [Environmental Health and Protection Commons](#), [Environmental Indicators and Impact Assessment Commons](#), and the [Environmental Monitoring Commons](#)

---

# Atlantic Richfield Company

**Mike Mc Anulty**

Liability Manager

317 Anaconda Road

Butte MT 59701

Direct (406) 782-9964

Fax (406) 782-9980

September 19, 2022

Nikia Greene  
Remedial Project Manager  
US EPA – Montana Office  
Baucus Federal Building  
10 West 15th Street, Suite 3200  
Helena, Montana 59626

Erin Agee  
Senior Assistant Regional Counsel  
US EPA Region 8 Office of Regional Counsel  
CERCLA Enforcement Section  
1595 Wynkoop Street  
Denver, CO 80202  
Mail Code: 8ORC-C

Daryl Reed  
DEQ Project Officer  
P.O. Box 200901  
Helena, Montana 59620-0901

Jonathan Morgan, Esq.  
DEQ, Legal Counsel  
P.O. Box 200901  
Helena, Montana 59620-0901

**RE: Butte Priority Soils Operable Unit (BPSOU) Final Street and Snow Management Plan**

Agency Representatives:

On behalf of Atlantic Richfield Company and Butte-Silver Bow (BSB), the Final BPSOU Street and Snow Management Plan is being distributed per the Agency approval letter dated August 18, 2022. The List of Figures and references within the Plan have been updated to address Agency comment received in the approval letter. The Final plan is available at the link below:

<https://pioneertechnicalservices.sharepoint.com/:f:/s/submitted/EmVfXAlzBO1Cp3KYezUSrvYBXUaOukuNljCVM9vQ7DGa3Q>.

If you have any questions or concerns, please call me at (907) 355-3914, or Eric Hassler at (406) 497- 5042.

Sincerely,



---

Mike Mc Anulty  
Liability Manager  
Remediation Management Services Company  
An affiliate of **Atlantic Richfield Company**



---

Eric Hassler, Director  
Department of Reclamation  
and Environmental Services  
Butte-Silver Bow



A bp affiliated company

# Atlantic Richfield Company

317 Anaconda Road

Butte MT 59701

Direct (406) 782-9964

Fax (406) 782-9980

## Mike Mc Anulty

Liability Manager

Cc: Patricia Gallery / Atlantic Richfield - email  
Chris Greco / Atlantic Richfield – email  
Josh Bryson / Atlantic Richfield - email  
Loren Burmeister / Atlantic Richfield – email  
Dave Griffis / Atlantic Richfield - email  
Jean Martin / Atlantic Richfield - email  
Irene Montero / Atlantic Richfield - email  
David A. Gratson / Environmental Standards / email  
Mave Gasaway / DGS - email  
Brianne McClafferty / Holland & Hart - email  
Joe Vranka / EPA - email  
David Shanight / CDM - email  
Curt Coover / CDM - email  
James Freeman / DOJ - email  
John Sither / DOJ - email  
Dave Bowers / DEQ - email  
Carolina Balliew / DEQ - email  
Matthew Dorrington / DEQ – email  
Wil George / DEQ – email  
Jim Ford / NRDP - email  
Pat Cunneen / NRDP - email  
Harley Harris / NRDP - email  
Katherine Hausrath / NRDP - email  
Meranda Flugge / NRDP - email  
Ted Duaine / MBMG - email  
Gary Icopini / MBMG - email  
Becky Summerville / MR - email  
Kristen Stevens / UP - email  
Robert Bylsma / UP - email  
John Gilmour / Kelley Drye - email  
Leo Berry / BNSF - email  
Robert Lowry / BNSF - email  
Brooke Kuhl / BNSF – email  
Lauren Knickrehm / BNSF - email  
Jeremie Maehr / Kennedy Jenks - email  
Annika Silverman / Kennedy Jenks - email  
Matthew Mavrinac / RARUS - email  
Harrison Roughton / RARUS - email  
Brad Gordon / RARUS - email  
Mark Neary / BSB - email  
Eric Hassler / BSB - email  
Julia Crain / BSB - email  
Chad Anderson / BSB - email

# Atlantic Richfield Company

## Mike Mc Anulty

Liability Manager

317 Anaconda Road

Butte MT 59701

Direct (406) 782-9964

Fax (406) 782-9980

Brandon Warner / BSB – email  
Abigail Peltomaa / BSB - email  
Eileen Joyce / BSB – email  
Sean Peterson/BSB – email  
Gordon Hart / BSB – email  
Jeremy Grotbo / BSB – email  
Karen Maloughney / BSB – email  
Josh Vincent / WET - email  
Craig Deeney / TREC - email  
Scott Bradshaw / TREC - email  
Brad Archibald / Pioneer - email  
Pat Sampson / Pioneer - email  
Joe McElroy / Pioneer – email  
Andy Dare / Pioneer – email  
Karen Helfrich / Pioneer - email  
Leesla Jonart / Pioneer - email  
Randa Colling / Pioneer – email  
Ian Magruder/ CTEC- email  
Joe Griffin / CTEC – email  
CTEC of Butte – email  
Scott Juskiewicz / Montana Tech – email

File: MiningSharePoint@bp.com - email  
BPSOU SharePoint - upload





**UNITED STATES ENVIRONMENTAL PROTECTION AGENCY  
REGION 8, MONTANA OFFICE**

FEDERAL BUILDING, 10 West 15<sup>TH</sup> Street, Suite 3200  
Helena, MT 59626-0096  
Phone 866-457-2690  
www.epa.gov/region8

Ref: 8MO

August 18, 2022

Mr. Eric Hassler  
Director  
Butte-Silver Bow County  
Dept. of Reclamation & Environmental Services  
155 W. Granite St.  
Butte, MT 59701

Mr. Mike McAnulty  
Liability Manager  
Atlantic Richfield Company  
317 Anaconda Road  
Butte, Montana 59701

**Re: Approval letter for the Butte Priority Soils Operable Unit (BPSOU) Draft Final 2022  
Street & Snow Management Plan (dated July 29, 2022)**

Dear Eric and Mike:

The U. S. Environmental Protection Agency (EPA), in consultation with the Montana Department of Environmental Quality (DEQ), is approving the *Draft Final 2022 Street & Snow Management Plan (dated July 29, 2022)*. Please address comments below prior to final distribution.

**Comments**

- List of Figures: Please correct the names on the figures to match those on page ii (List of Figures). In addition, Figure 1 (Primary and Secondary Snow Removal Routes and Snow Storage Locations) on page ii does not exist within the plan. Confirm text in plan to accurately reflect figure titles.

If you have any questions or concerns, please call me at (406) 457-5019.

Sincerely,

**NIKIA  
GREENE** Digitally signed  
by NIKIA GREENE  
Date: 2022.08.18  
12:14:48 -06'00'

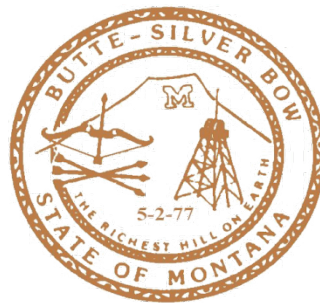
Nikia Greene  
Remedial Project Manager

cc: (email only)  
Butte File  
Matt Dorrington, DEQ

Daryl Reed; DEQ  
Will George; DEQ  
Jon Morgan; DEQ counsel  
Carolina Balliew; DEQ  
Harley Harris; NRDP  
Katherine Hausrath; NRDP  
Jim Ford; NRDP  
Pat Cunneen; NRDP  
John Gallagher; BSBC  
Sean Peterson; BSBC  
Eileen Joyce; BSBC  
Eric Hassler; BSBC  
Brandon Warner; BSBC  
Chad Anderson; BSBC  
Karen Maloughney; BSBC  
Julia Crain; BSBC  
Abby Peltomaa; BSBC  
Jeremy Grotbo; BSBC  
Anne Walsh; UP  
Robert Bylsma; UP counsel  
Leo Berry; BNSF and UP counsel  
Doug Brannan; Kennedy Jenks for BNSF and UP  
Brooke Kuhl; BNSF counsel  
Lauren Knickrehm; for BNSF  
Annika Silverman; Kennedy Jenks for BNSF and UP  
Bob Andreoli; Patroit/RARUS  
Becky Summerville; counsel for Inland Properties Inc.  
Robert Lowry, BNSF counsel  
Loren Burmeister; AR  
Josh Bryson; AR  
Chris Greco; AR  
Mike Mcanulty; AR  
Dave Griffis; AR  
Jean Martin; Counsel AR  
Mave Gasaway; attorney for AR  
Adam Cohen; Counsel for AR  
Pat Sampson; Pioneer for AR  
Scott Sampson; Pioneer for AR  
Scott Bradshaw; TREC  
Karen Helfrich; Pioneer for AR  
Andy Dare; Pioneer for AR  
Scott Sampson; Pioneer for AR  
Brad Archibald; Pioneer for AR  
Andy Dare; Pioneer for AR  
Tina Donovan; Woodardcurran for AR  
Ted Duaine; MBMG  
Gary Icopini; MBMG

David Shanight, CDM Smith  
Curt Coover, CDM Smith  
Chapin Storrar; CDM Smith  
Erin Agee, EPA  
Joe Vranka; EPA  
Chris Wardell; EPA  
Dana Barnicoat; EPA  
Charlie Partridge; EPA  
Ian Magruder; CTEC (Tech Advisor)  
Janice Hogan; CTEC  
Marissa Stockton; Rosendale State Director  
Kristi Carroll; Montana Tech Library

***FINAL***  
**STREET & SNOW MANAGEMENT PLAN**  
**FOR THE CITY-COUNTY OF BUTTE-SILVER BOW**



**PREPARED FOR:**

US Environmental Protection Agency, Region 8  
Butte Office  
400 North Main Street, Room 339  
Butte, MT 59701

**September 2022**

## Table of Contents

1.0	INTRODUCTION .....	1
2.0	STREET/SNOW MANAGEMENT ACTIVITIES .....	1
2.1	Street Maintenance .....	1
2.1.1	Sweeping and Flushing.....	1
2.1.2	Sand Source Sampling.....	2
2.1.3	Street Deicing.....	2
2.1.4	Street Maintenance BMPs .....	2
2.2	Snow Removal and Storage .....	2
2.2.1	Snow Removal Routes.....	3
2.2.2	Snow Storage Areas .....	3
2.2.3	Snow Removal BMPs.....	3
3.0	COORDINATION AND TRAINING .....	5
4.0	CONTACT INFORMATION .....	6
5.0	SUMMARY.....	6

### List of Figures

- Figure 1. Butte Silver Bow Snow Plow Routes
- Figure 2-1. Snow Storage Area #1
- Figure 2-2. Snow Storage Area #2
- Figure 2-3. Snow Storage Area #3
- Figure 2-4. Snow Storage Area #4
- Figure 2-5. Snow Storage Area #5
- Figure 2-6. Snow Storage Area #6

## **1.0 INTRODUCTION**

The Butte-Silver Bow (BSB) Public Works Department - Road Division is tasked with providing street and snow maintenance activities for specific primary and secondary routes within the City-County of Butte-Silver Bow. Typical street and snow management activities include:

- Street Sweeping;
- Street Flushing;
- Sand Application;
- Deicer Application;
- Sampling of Sand Sources;
- Snow Removal; and
- Snow Storage.

Pursuant to a requirement by the Environmental Protection Agency (EPA) as part of a 2011 Unilateral Administrative Order (UAO) on the responsible parties, BSB has prepared this Street/Snow Maintenance Plan. This plan focuses on activities that could result in potentially contaminated sediment being delivered to area receiving waters. This plan will be implemented by BSB to ensure that environmental impacts from street and snow maintenance activities are minimized and appropriate administrative and structural Best Management Practices (BMPs) are implemented. The following sections summarize BSB's activities and BMPs that are employed to minimize potential impacts to area receiving waters.

## **2.0 STREET/SNOW MANAGEMENT ACTIVITIES**

### **2.1 Street Maintenance**

Street maintenance activities occur throughout the year as a taxpayer-provided service to local residents not only to ensure safe travel on area streets, but also to reduce airborne dust and sediment transport to storm sewers and ultimately area receiving waters. The following sections summarize the BSB Road Division's street and snow maintenance activities.

#### **2.1.1 Sweeping and Flushing**

The BSB Road Division operates five (5) street sweepers throughout the City-County. Street sweeping occurs throughout the year on an as needed basis. Sweeping is conducted during dry winter periods and in the spring to remove accumulated traction sand before spring snowmelt and street flushing activities to minimize sediment loading to storm sewers. Street sweeping occurs during the summer and fall months on an as needed basis to reduce sediment, litter, and leaf loading to storm sewers as well as reduce small particulate dust generation. All BSB street sweepers use water to minimize dust generation during use, except during freezing conditions during the winter months.

Streets and gutters are flushed periodically to remove residual sand and debris not removed by the sweepers, and to reduce airborne dust generation after sweeping. Street flushing is only conducted after streets are swept, in order to reduce the amount of debris that reaches storm water infrastructure.

Sediment from street sweeping and storm inlet maintenance is collected and transported to the BSB landfill or mine waste repository, depending on where maintenance activities are being conducted.

### **2.1.2 Sand Source Sampling**

BSB currently uses multiple sand sources for application to city streets. Sand stockpiles are located at the BSB Airport and BSB Crusher. BSB will sample the sand sources prior to use, according to the BPSOU Reclaimed Areas Maintenance and Monitoring (M&M) Quality Assurance Project Plan (QAPP), to confirm metals-impacted materials are not used on roadways and provide analytical data in compliance with the Solid Media Management Program Plan, as approved by EPA.

### **2.1.3 Street Deicing**

The BSB Road Division applies street deicer (Magnesium Chloride) during winter freezing conditions where the nighttime low temperature is not below 20 degrees Fahrenheit. Colder temperatures reduce the effectiveness of the deicer. BSB applies deicer at the minimal effective application rate (25 gallons per lane-mile) to prevent excess loading of Magnesium Chloride to surface waters. The use of deicer reduces the volume of sand applied to streets; however, it has limited effectiveness on steep slopes and at colder temperatures.

### **2.1.4 Street Maintenance BMPs**

To minimize environmental impacts to receiving surface waters, the BSB Road Division employs administrative and structural BMPs for street maintenance activities.

Administrative BMPs utilized by the Road Department are as follows:

- Routine sweeping during dry periods (summer and winter);
- Use of water during sweeping;
- Street sweeping prior to flushing;
- Regular cleaning of storm system drop inlets as prioritized by the BSB Storm Water Operation and Maintenance Plan;
- Periodic sampling of road sand sources; and
- Using minimum effective application rate of Magnesium Chloride deicer.

Other site-specific BMPs may be implemented by BSB staff if specific conditions warrant additional protection.

## **2.2 Snow Removal and Storage**

The BSB Road Division routinely plows and removes snow from primary and secondary travel routes within the Butte urban limits. Typically, snow is plowed to center medians for later removal with snow removal equipment and haul trucks. Collected snow is hauled to the nearest designated snow storage area. For snow removal routes in more rural areas, snow is plowed to the edges of the street or borrow ditch and is not collected. The following sections describe BSB snow removal routes, snow storage areas, and snow removal/storage BMPs.

### **2.2.1 Snow Removal Routes**

Snow removal occurs along primary and secondary travel routes as shown on Figure 1. Snow removal frequency is dependent on weather conditions and available manpower. Snowplow trucks clear the snow from the roadways by plowing snow to medians where the snow can be collected in haul trucks using snow removal machines. Haul trucks transport the snow to the nearest snow storage areas.

### **2.2.2 Snow Storage Areas**

The Butte Silver-Bow Road Department utilizes six designated snow storage areas that are centrally located near snow removal routes:

- Area #1: Northeast Civic Center Parking Lot (Figure 2-1);
- Area #2: South of West Elementary (Figure 2-2);
- Area #3: Kelley Mine Yard (Figure 2-3);
- Area #4: George Street Near Chamber of Commerce (Figure 2-4);
- Area #5: Missoula Gulch Ball Fields (Figure 2-5); and
- Area #6: Madison Street (Figure 2-6).

Snow is stored at these areas throughout the winter months. Snow piles melt in the spring and remaining sediment will be removed and transported to the Mine Waste Repository.

Observation of the surrounding Superfund vegetation in the areas where removed snow is placed by BSB County (BSBC) will be done by the Respondents through the Butte Reclamation Evaluation System (BRES) program, with appropriate oversight. Snow Storage Area #4 is located within BRES Site No. 152 and will be evaluated using the BRES during the BRES Quadrant 4 evaluation cycle. The remaining snow storage areas are not reclaimed sites; therefore, they will not be evaluated using BRES. The remaining snow storage areas will be monitored annually only for potential erosion. When and if vegetation is adversely affected by the salt from the snow stockpile areas, BSBC will develop work plans per existing BSB protocol to address the adversely affected vegetation for review and approval by EPA and will implement those plans upon approval.

### **2.2.3 Snow Removal BMPs**

Where practical, snow storage areas are selected where drainage does not leave the site or discharge to storm water infrastructure. For locations that do discharge near existing storm water infrastructure, sites have been evaluated for structural BMPs to prevent sediment from directly entering receiving surface waters without treatment. Details on each snow storage location, the type/location of structural BMPs, and the final discharge points are shown on individual snow storage area maps (Figures 2-1 through 2-6) and summarized in Table 1 below.



**Table 1. Snow Removal Area BMPs and Discharge Points**

<b>Snow Removal Area</b>	<b>Existing BMPs</b>	<b>Final Discharge Point (Existing)</b>	<b>Proposed BMPs</b>
<b>Area #1: Northeast Civic Center Parking Lot</b>	Flat impervious surface with long travel distance to storm water infrastructure	Sheet flows to storm inlets on Civic Center Road that discharge to Anaconda Road storm main.	Parking lot will be replaced (NRDP). BSB will ensure that the new design will route storm water to new retention areas or the Warren Avenue HDD.
<b>Area #2: South of West Elementary</b>	On-site retention area  Vegetative Buffer	Does not discharge off site as sheet flows to west and south toward newly constructed retention area	None
<b>Area #3 Kelley Mine Yard</b>	Vegetative Buffer  Armored Slopes  Superfund Structures	Discharges to Kelley Channel "B", Kelley Catch Basin, or directly to Berkley Pit. Note: Kelley Channel "B" will be inspected after significant snowmelt events.	Inspect two drop inlets in snow area in Spring and confirm drainage location. Either abandon or install BMPs to minimize sediment.
<b>Area #4: George Street near Chamber of Commerce</b>	On-site retention area  Vegetative Buffer	Does not discharge off site	None
<b>Area #5: Missoula Gulch Ball Fields</b>	Relatively flat snow storage surface  Vegetative Buffer	Snow storage is on relatively flat area west of the northern ball field. Runoff from snow melt will flow to north and west toward nearby storm water ditches as sheet flow through vegetative buffer.	Inspect nearby storm water ditches for evidence of sediment laden runoff from storage area. If necessary, earthen berms will be constructed to contain runoff and minimize sediment.
<b>Area #6: Madison Street</b>	Relatively flat snow storage surface  Vegetative Buffer	Snow storage occurs south of Madison Street. Runoff from snow melt will flow to south toward nearby storm water inlets and ditches as sheet flow through vegetative buffer.	Inspect nearby storm water ditches and inlets for evidence of sediment laden runoff from storage area. If necessary, earthen berms will be constructed to contain runoff and minimize sediment.

As described in **Table 1**, only Area #1 (Northeast Civic Center Parking Lot) currently discharges directly into receiving waters without existing BMPs (berms, retention pond, vegetative buffer, etc.). As part of the NRDP Draft Conceptual Restoration Plan, the Civic Center parking lot will be removed and replaced during construction activities. BSB will ensure that the new parking lot design includes a snow storage location with adequate BMPs to treat snow melt. This may be achieved through the installation of retention areas or routing through the Warren Avenue HDD.

Snowmelt runoff from Area #3 (Kelley Mine Yard) discharges into Kelley Channel "B". BSB crews will inspect the condition of the channels and determine if sediment must be removed from the channel. This activity will be concurrent with inspection and maintenance activities identified in the Superfund Storm Water Operations and Maintenance (O&M) Plan.

Snowmelt runoff from Area #5 (Missoula Gulch Ball Fields) discharges into Missoula Gulch storm water ditches. BSB crews will inspect the ditches and determine if sediment must be removed from the channels or if additional BMPs are necessary at the snow storage area. This activity will be concurrent with inspection and maintenance activities identified in the Superfund Storm Water O&M Plan.

Snowmelt runoff from Area #6 (South of Madison Street) discharges into inlets and ditches connected to the Warren Avenue storm water tunnel and TCRA ditches. BSB crews will inspect the inlets, manholes, and ditches to determine if sediment must be removed from the pipe and channels, or if additional BMPs are necessary at the snow storage area. This activity will be concurrent with inspection and maintenance activities identified in the Superfund Storm Water O&M Plan.

Area #6 is part of the Anderson Shaft site and will have additional remedy work completed as part of the Consent Decree. BSB will coordinate with EPA on the need for any permanent BMPs; however, it is anticipated that this storage area will be temporary.

Annual site inspections will be conducted each spring (post-snowmelt) to monitor the effectiveness of site BMBs and discharge points (if any). If necessary, additional BMPs will be developed and implemented to prevent sediment from entering the storm water system. During the annual inspection, BSB will also sample the snow pile remnants per the BPSOU Unreclaimed Sites QAPP and compare results to action levels listed in Table 1 and 2 to verify the metals results prior to disposing of the snow pile remnant sediment and to confirm associated storm water or melted snow storage will not contribute to surface water degradation. Snow pile remnants exceeding action levels listed in Table 1 of the Unreclaimed Sites QAPP will be disposed of at the Mine Waste Repository. All remnant materials below action levels will be disposed of at appropriate facilities at the discretion of BSB.

### **3.0 COORDINATION AND TRAINING**

BSB has implemented several additional control measures related to its municipal maintenance activities as required by its Municipal Separate Storm Sewer System (MS4) Permit with Montana DEQ. A major requirement of the MS4 program is the implementation of training programs for BSB employees. BSB Road Division employees receive annual training on several MS4 requirements, including the

following topics: BMPs (installation and maintenance), Illicit Discharge Detection and Elimination (IDDE), Construction Site Storm Water Management, and internal BSB maintenance activities. Topics vary each session and are specific to maintenance and construction activities that are frequently conducted by BSB employees. BSB Road Division staff also communicates with BSB Metro Sewer Maintenance staff on a regular basis in order to coordinate maintenance activities between the two divisions, as Metro Maintenance is responsible for cleaning of the storm water system.

## **4.0 CONTACT INFORMATION**

Street and snow management activities are implemented by the Butte-Silver Bow Public Works – Road Division. Questions related to street and snow management activities can be directed to the following personnel:

Public Works Director: Mark Neary – 497-6519, [mneary@bsb.mt.gov](mailto:mneary@bsb.mt.gov)

Supervisor—Road Division: Tom Loggins – 490-0053, [tloggins@bsb.mt.gov](mailto:tloggins@bsb.mt.gov)

## **5.0 SUMMARY**

Butte-Silver Bow is committed to the ultimate goal of minimizing sediment runoff from street and snow maintenance activities into area receiving waters. This Street and Snow Management Plan uses a combination of administrative and structural BMPs to accomplish this goal.

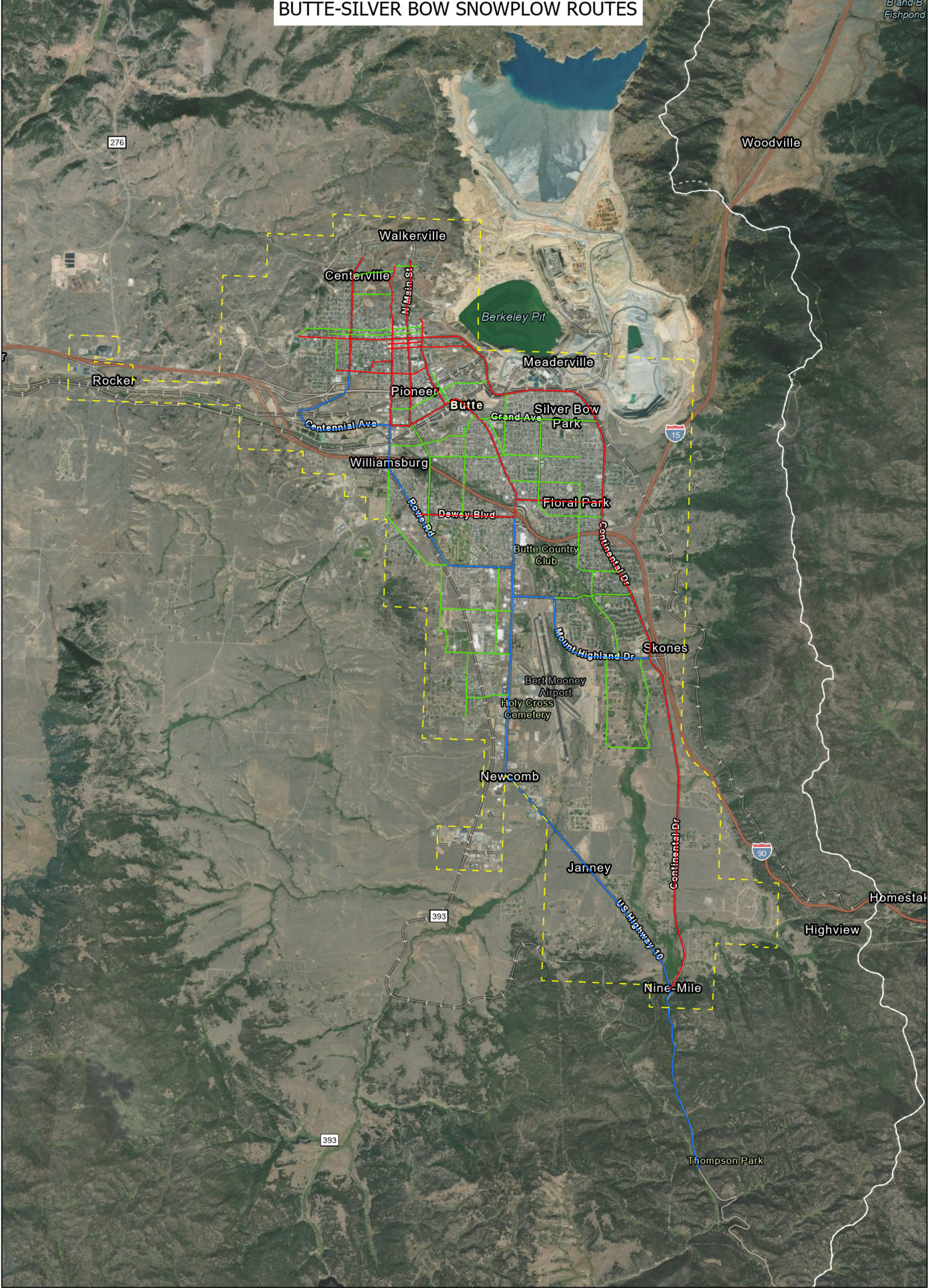
It is important to note that BSB’s current sand sources have low levels of metals that are below EPA screening levels; as a result, runoff from snow storage locations should not be considered a primary source of metals contamination to surface water. However, the use of proper management and practices on its street and snow maintenance activities will minimize discharge of sediment to storm water infrastructure and area receiving waters.

## Figures

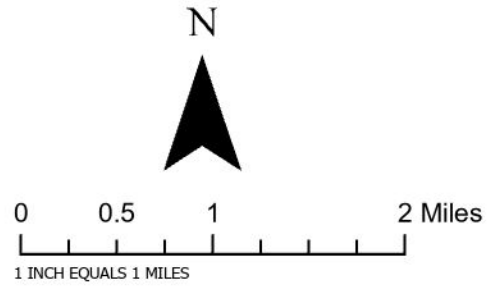


# BUTTE-SILVER BOW SNOWPLOW ROUTES

B and B Fishpond



	BUTTE-SILVER BOW COUNTY BOUNDARY
	URBAN LIMIT BOUNDARY
BUTTE-SILVER BOW ROUTES	
	PRIMARY ROUTE
	SECONDARY ROUTE
	MT DOT ROUTE

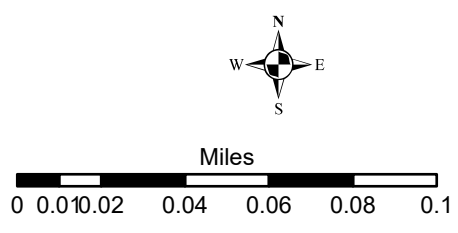






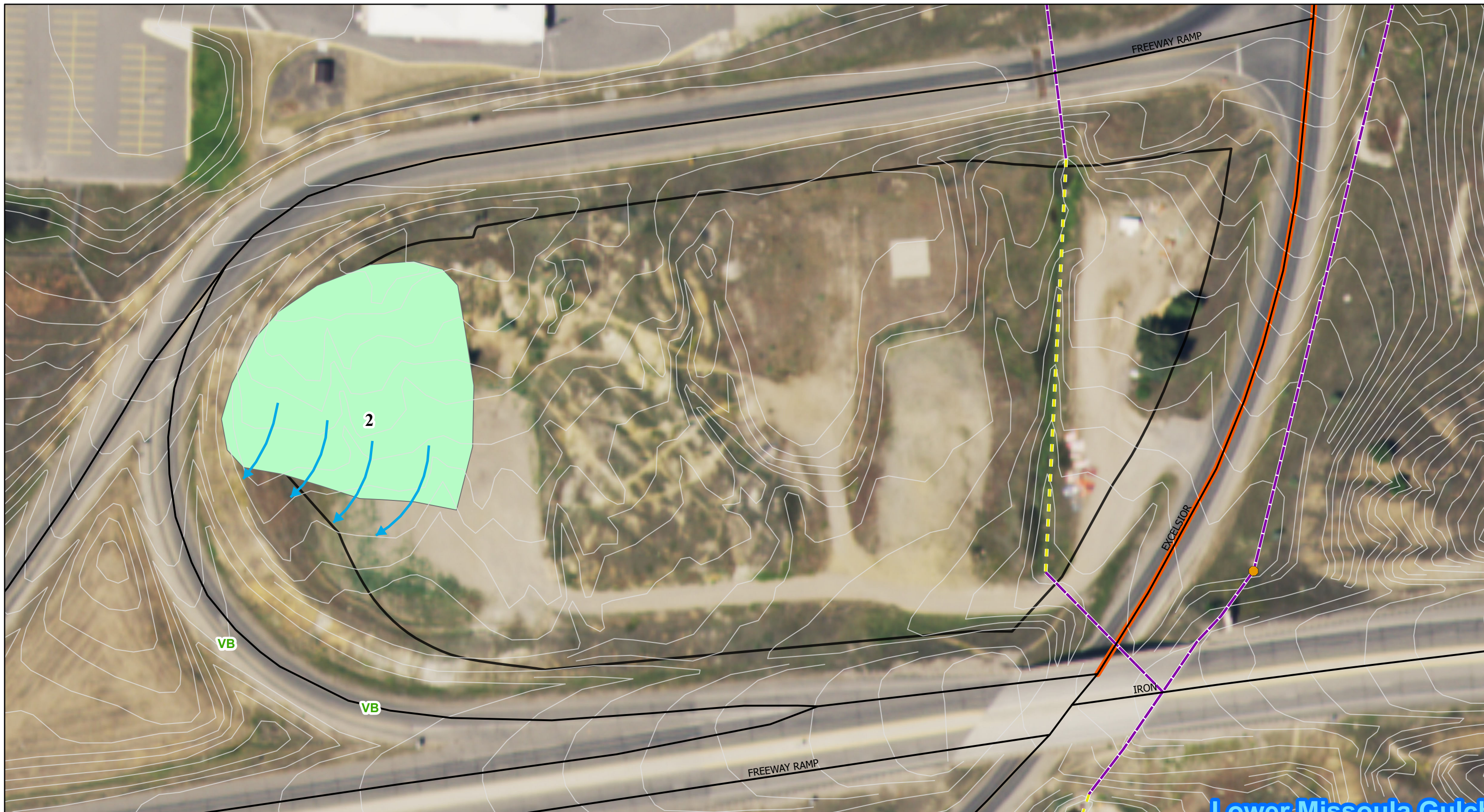
**Legend**

HD's	Storm Water Ditch	Superfund Storm Water Channels	4
Manhole	<b>National Hydrography Dataset</b>	Snowarea	BSB Snow Area
Inlet	Perennial Stream/River	<b>Snow Removal Route #</b>	Superfund Storm Water Catch Basins
Flow Direction	Intermittent Stream/River	1	Drainage Basin
Storm Water Line	Canal/Ditch	2	
	Pipeline	3	



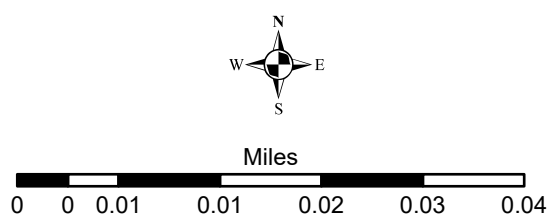
	<b>STREET &amp; SNOW MANAGEMENT PLAN</b>	
	<b>Snow Storage Area #1</b>	
	Job#: BSBPWM96	<b>FIGURE 2-1</b>
	Date: 4/13/2021	
Path: M:\Bulte Silver Bow\BSBPWM11\Snow Storage\2021\Snow_management\Snow_management.aprx, Author: jleprosse		





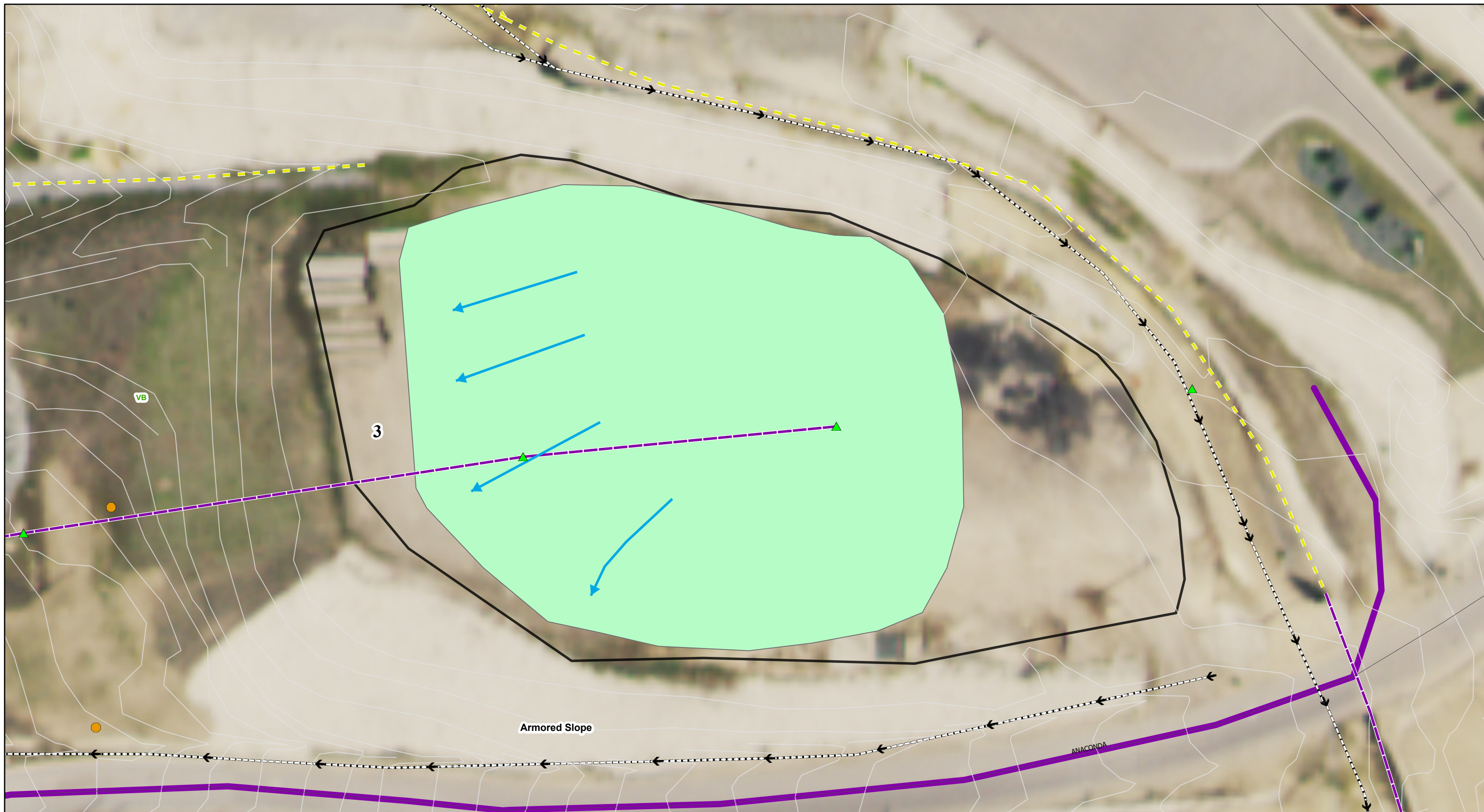
**Legend**

HD's	Storm Water Ditch	Superfund Storm Water Channels	4
Manhole	<b>National Hydrography Dataset</b>	Snowarea	BSB Snow Area
Inlet	Perennial Stream/River	<b>Snow Removal Route #</b>	Superfund Storm Water Catch Basins
Flow Direction	Intermittent Stream/River	1	Drainage Basin
Storm Water Line	Canal/Ditch	2	
	Pipeline	3	



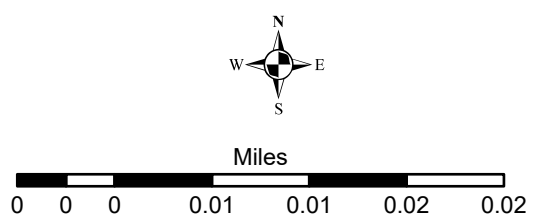
	<b>STREET &amp; SNOW MANAGEMENT PLAN</b>	
	<b>Snow Storage Area #2</b>	
	Job#: BSBPWM96	<b>FIGURE 2-2</b>
	Date: 4/13/2021	
Path: M:\Bulte Silver Bow\BSBPWM11\Snow Storage\2021\Snow_management\Snow_management.aprx, Author: jleprosse		





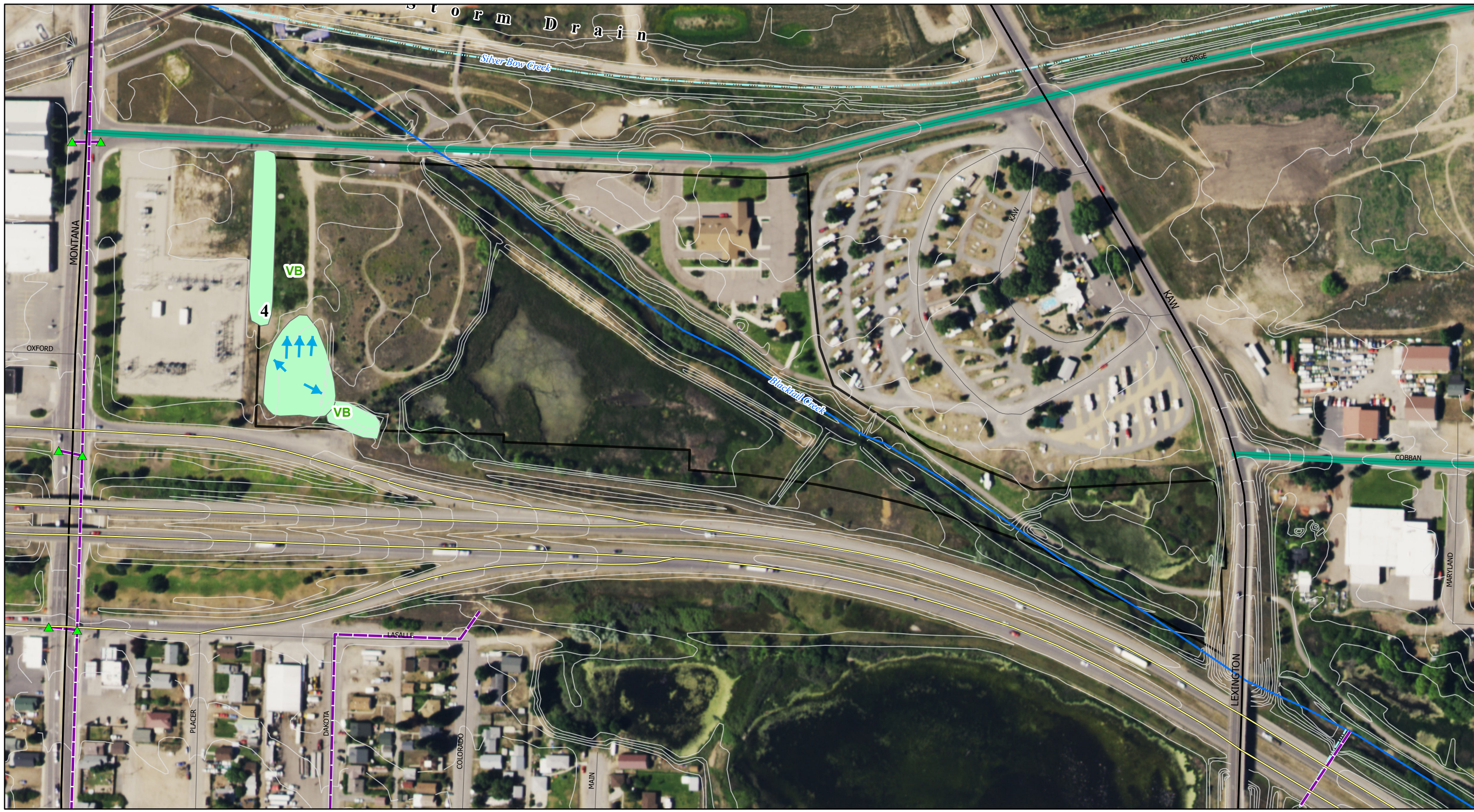
**Legend**

HD's	Storm Water Ditch	Superfund Storm Water Channels	4
Manhole	<b>National Hydrography Dataset</b>	Snowarea	BSB Snow Area
Inlet	Perennial Stream/River	<b>Snow Removal Route #</b>	Superfund Storm Water Catch Basins
Flow Direction	Intermittent Stream/River	1	Drainage Basin
Storm Water Line	Canal/Ditch	2	
	Pipeline	3	



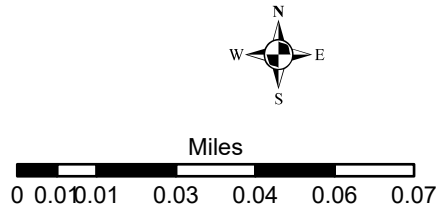
	<b>STREET &amp; SNOW MANAGEMENT PLAN</b>
	<b>Snow Storage Area #3</b>
	Job#: BSBPWM96
	Date: 4/13/2021
<b>FIGURE 2-3</b>	
<small>Path: M:\Bulte Silver Bow\BSBPWM11\Snow Storage\2021\Snow_management\Snow_management.aprx, Author: jleprosse</small>	





**Legend**

HD's	Storm Water Ditch	Superfund Storm Water Channels	4
Manhole	<b>National Hydrography Dataset</b>	Snowarea	BSB Snow Area
Inlet	Perennial Stream/River	<b>Snow Removal Route #</b>	Superfund Storm Water Catch Basins
Flow Direction	Intermittent Stream/River	1	Drainage Basin
Storm Water Line	Canal/Ditch	2	
	Pipeline	3	



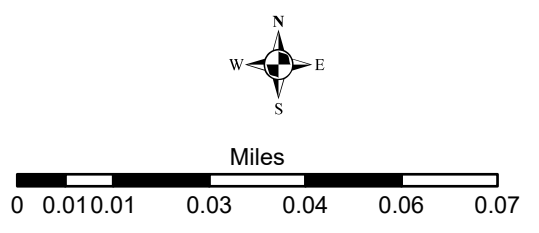
	<b>STREET &amp; SNOW MANAGEMENT PLAN</b>	
	<b>Snow Storage Area #4</b>	
	Job#: BSBPWM96	<b>FIGURE 2-4</b>
	Date: 4/13/2021	
Path: M:\Bulte Silver Bow\BSBPWM11\Snow Storage\2021\Snow_management\Snow_management.aprx, Author: jleprosse		





**Legend**

HD's	Storm Water Ditch	Superfund Storm Water Channels	4
Manhole	<b>National Hydrography Dataset</b>	Snowarea	BSB Snow Area
Inlet	Perennial Stream/River	<b>Snow Removal Route #</b>	Superfund Storm Water Catch Basins
Flow Direction	Intermittent Stream/River	1	Drainage Basin
Storm Water Line	Canal/Ditch	2	
	Pipeline	3	



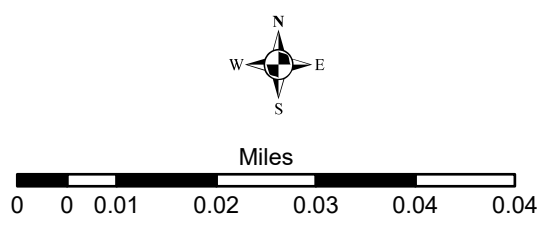
	<b>STREET &amp; SNOW MANAGEMENT PLAN</b>	
	<b>Snow Storage Area #5</b>	
	Job#: BSBPWM96	<b>FIGURE 2-5</b>
	Date: 4/13/2021	
Path: M:\Bulte Silver Bow\BSBPWM11\Snow Storage\2021\Snow_management\Snow_management.aprx, Author: jeprouse		





**Legend**

HD's	Storm Water Ditch	Superfund Storm Water Channels	4
Manhole	<b>National Hydrography Dataset</b>	Snowarea	BSB Snow Area
Inlet	Perennial Stream/River	<b>Snow Removal Route #</b>	Superfund Storm Water Catch Basins
Flow Direction	Intermittent Stream/River	1	Drainage Basin
Storm Water Line	Canal/Ditch	2	
	Pipeline	3	



	<b>STREET &amp; SNOW MANAGEMENT PLAN</b>	
	<b>Snow Storage Area #6</b>	
	Job#: BSBPWM96	<b>FIGURE 2-6</b>
	Date: 4/13/2021	
Path: M:\Bulte Silver Bow\BSBPWM11\Snow Storage\2021\Snow_management\Snow_management.aprx, Author: jleprosse		