

Montana Tech Library

Digital Commons @ Montana Tech

National Lab Day

Lectures

10-8-2019

Remote Sensing Capabilities & Interest DOE Synergy

Jessica Mitchell

University of Montana, Missoula

Follow this and additional works at: <https://digitalcommons.mtech.edu/national-lab-day>

Recommended Citation

Mitchell, Jessica, "Remote Sensing Capabilities & Interest DOE Synergy" (2019). *National Lab Day*. 29.
<https://digitalcommons.mtech.edu/national-lab-day/29>

This Presentation is brought to you for free and open access by the Lectures at Digital Commons @ Montana Tech. It has been accepted for inclusion in National Lab Day by an authorized administrator of Digital Commons @ Montana Tech. For more information, please contact sjuskiewicz@mtech.edu.

Remote Sensing Capabilities & Interest DOE Synergy

DOE Lab Day
Tuesday October 8th, Butte, MT
Jessica Mitchell

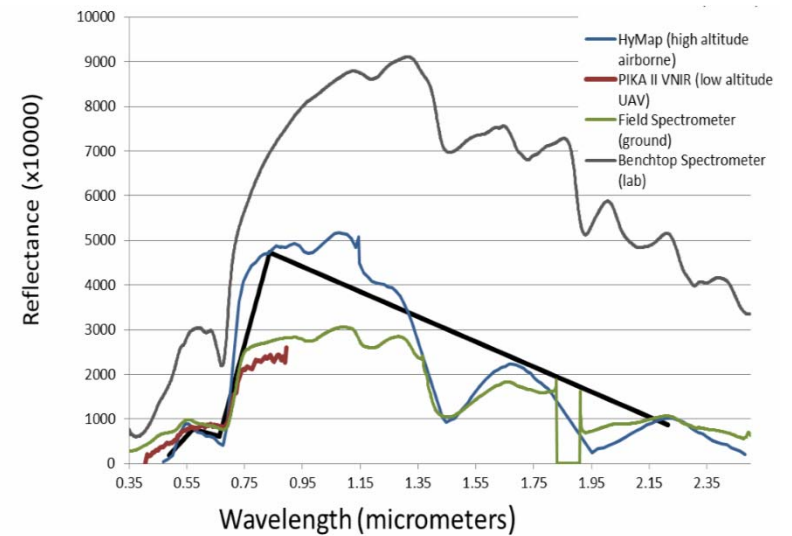


[http://www.umt.edu/spatial-analysis-lab/
spatial.analysis@umontana.edu](http://www.umt.edu/spatial-analysis-lab/spatial.analysis@umontana.edu)

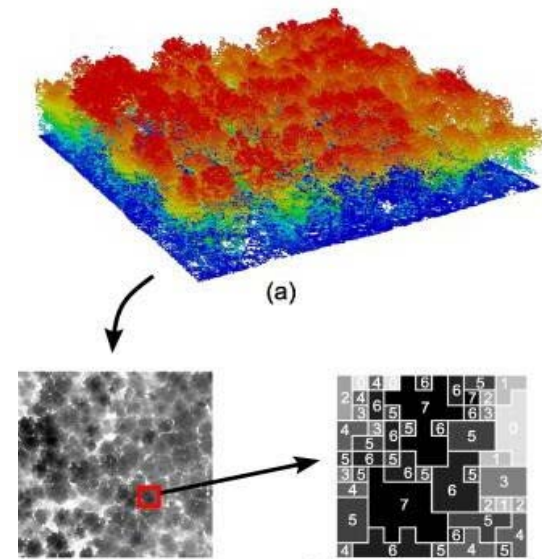
Vegetation Spectroscopy Scaling

sensor detection limits

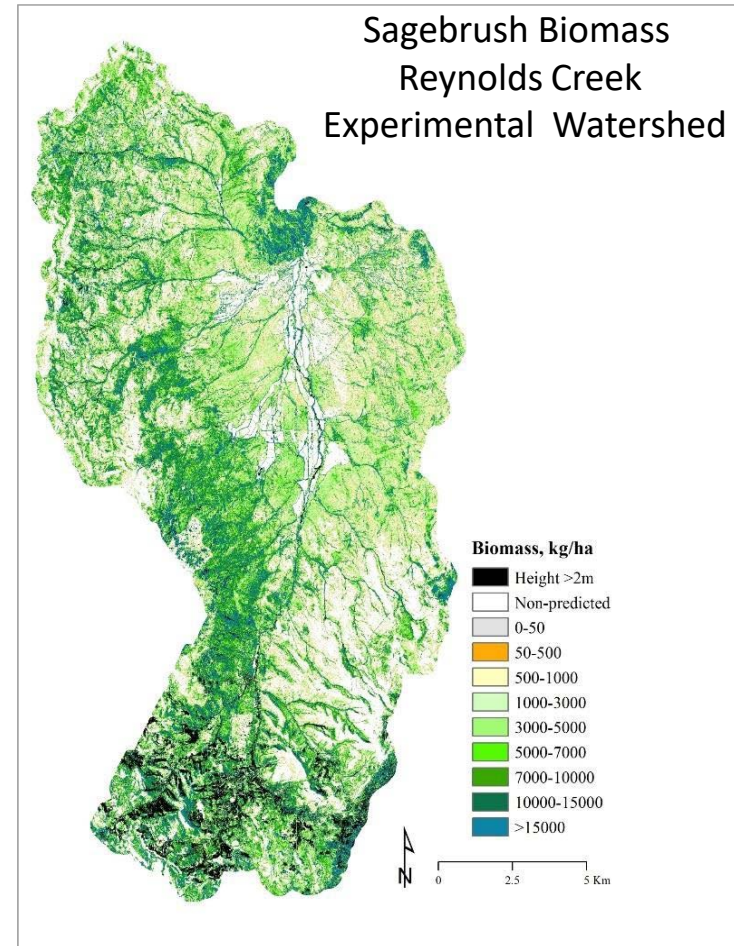
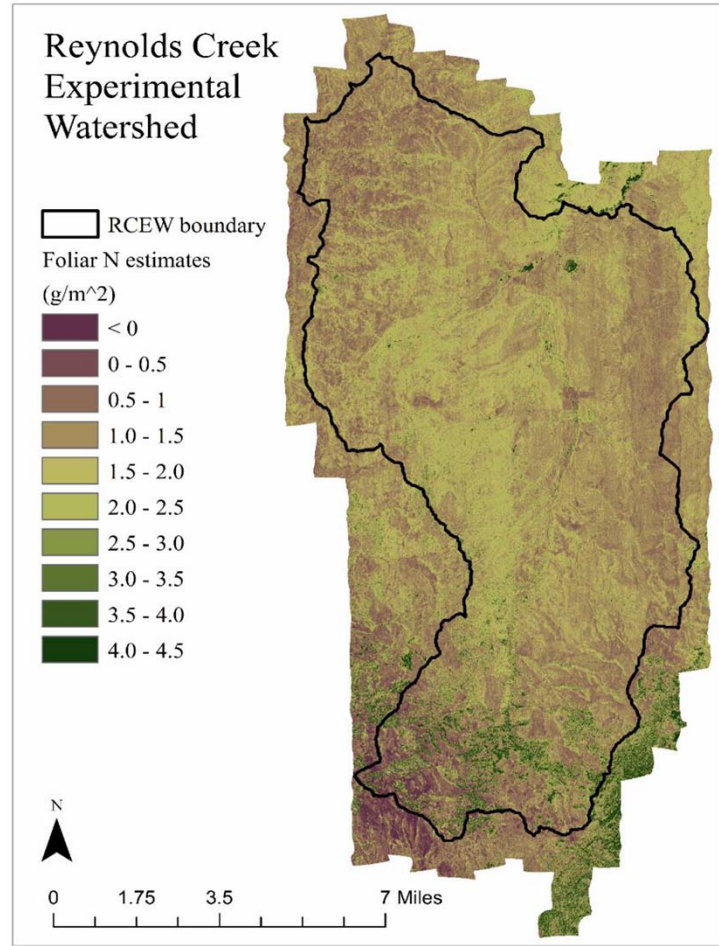
- Nitrogen (crude protein)
- Monoterpene compounds
- Phenols
- Cellulose and lignin



Lidar Point Cloud Processing & Integration with Imaging Spectroscopy



Biomass and Forage



Training and Student Opportunities

- Training & educational material
- Instructional workshops
- Preprocessing & workflow automation



[Macrosystems Biology Workshop I](#)